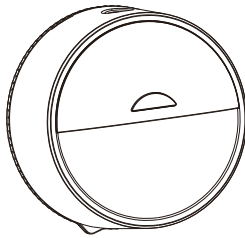


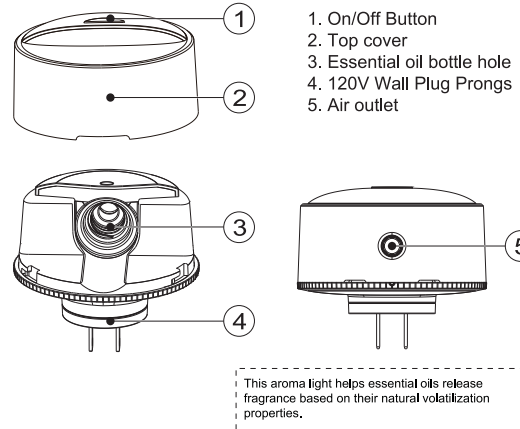
# REVIVE

## Grace Night Light Wall Diffuser



I24

### PRODUCT DIAGRAM



Grace Night Light Diffuser

### IMPORTANT SAFETY INSTRUCTIONS

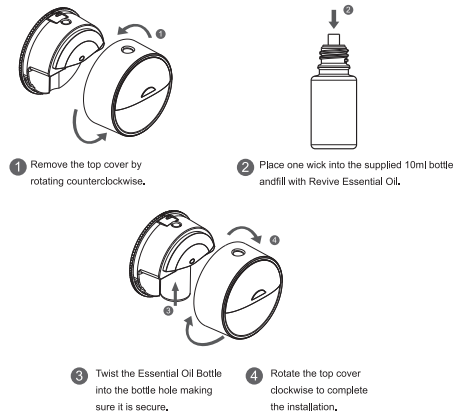
WARNING – When using electric products, basic precautions should always be followed, including the following:

- Read all instructions before using.
- Do not put fingers or hands into the unit.
- Clean regularly as per Care & Maintenance instructions to avoid malfunction.
- Keep away from children and pets unless under direct adult supervision.
- Keep the diffuser away from heat sources.
- Do not tip the diffuser when in use. Tipping may cause oil to leak.
- Do not modify, disassemble or repair this product without permission. Please contact Revive Customer Service with any issues.
- Do not intentionally damage the product.
- If the wall plug on the product is damaged or loose, do not use in the wall.
- If there is a peculiar odor, noise, abnormal heat, please unplug the diffuser from the power outlet quickly and stop using it.
- Do not use and/or store the product in wet, damp places, such as the bathroom.
- Keep the diffuser away from heat sources.
- Essential oils may cause staining, if accidentally spilled on the unit, wipe it off immediately with a piece of cloth.
- Do not plug or unplug the product with wet hands. And do not touch the product when plugged in with wet hands.
- Do not block the air inlet when the diffuser is in use
- Do not immerse in water

Household Use Only  
SAVE THESE INSTRUCTIONS

Grace Night Light Diffuser

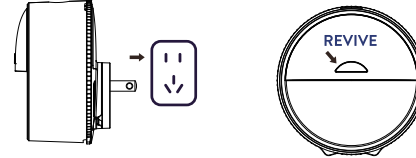
### ESSENTIAL OIL BOTTLE INSTALLATION



When the product is filled with essential oil, do not turn the diffuser upside down, to prevent oil leakage.

Grace Night Light Diffuser

### OPERATIONS



1. Follow the initial set up directions.
2. Make sure the REVIVE logo on the cover is facing front and not upside down.
3. Plug into the wall socket.
4. Press the button once on the aromatherapy heating function, and the blue indicator light will turn on.
5. Press the same button a second time and the warm light will turn on (great night light).
6. Press the button a third time to turn off.

### CARE AND MAINTENANCE

After using 5-6 times, or 2-3 days, please clean the unit as follows:

1. Turn off the diffuser and unplug from the wall.
2. Remove the cover.
3. Unscrew the essential oil bottle from the diffuser.
4. Wipe with soft cloth or wet tissue to clean the residual oil on the head.

Grace Night Light Diffuser

### SPECIFICATIONS

Dimensions:	3.4 x 3.4 x 2.39" / 86 x 86 x 60.5mm
Weight:	6 oz/170g
Voltage:	AC 120V – 60Hz, Powder 2W
Time Modes:	ON
Tank Capacity:	10mL
Coverage:	200 sq ft.
Materials:	PP + PC +POM BPA free
LED Lights:	1 color
Accessories:	User manual, 3 cotton wicks, 10mL Empty Bottle, Revive Metal Key Accessory

#### NOTE:

- This unit will automatically shut off completely after 12 hours.
- One wick will last approximately 3 months when using the same essential oil. If changing essential oil, a new wick should be used.

Grace Night Light Diffuser