

Sample Information

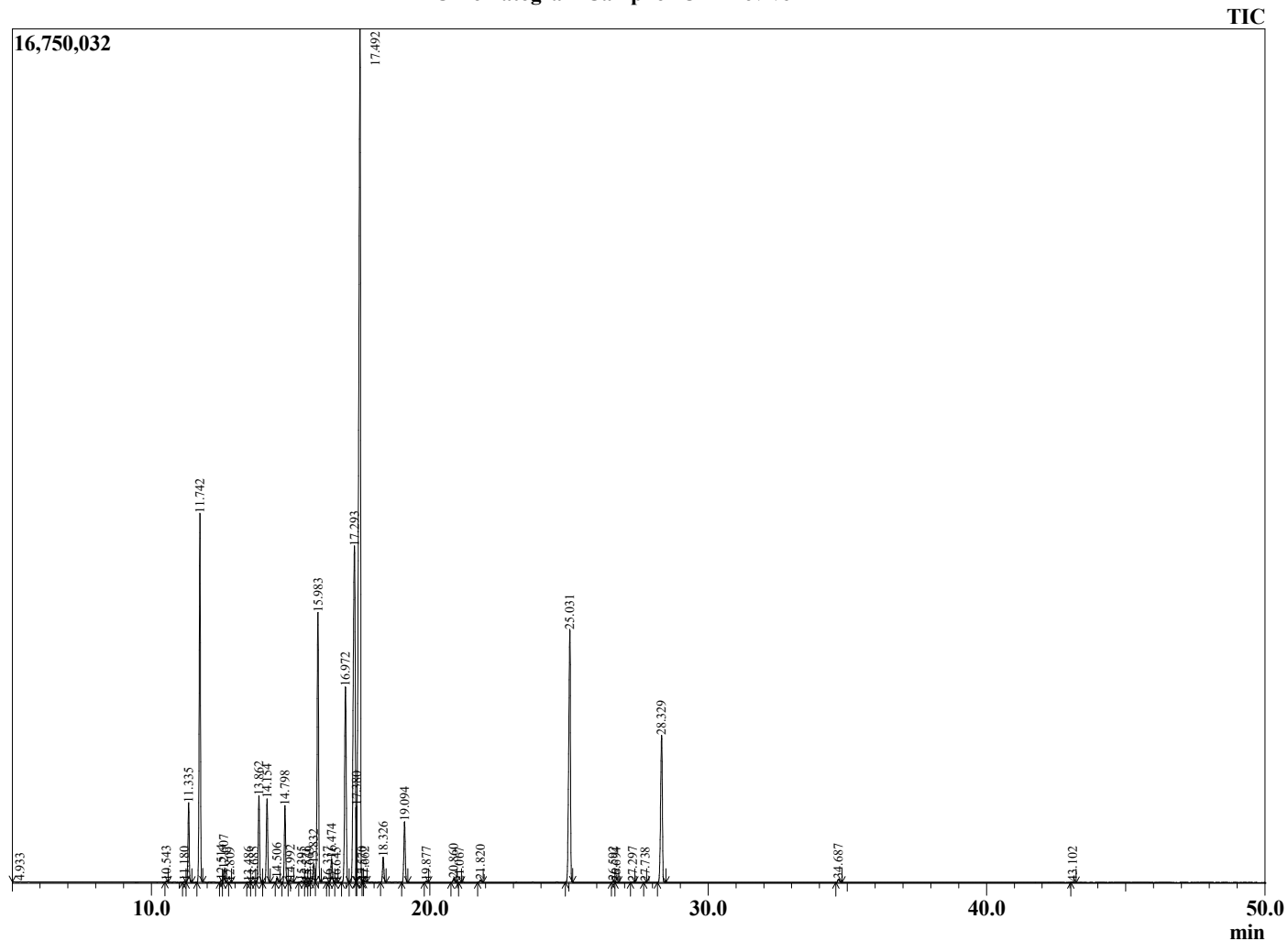
Analyzed by : Dr. Robert S. Pappas
 Analyzed : 12/22/2023 8:47:03 AM
 Sample Type : Essential Oil
 Sample Name : Camphor Oil - Revive
 Sample ID : 3B
 Injection Volume : 0.10
 Instrument ID : GC-2



Peak Report TIC

R.Time	Name	Area%
4.933	4-Methylpentan-2-one	0.01
10.543	2,6-Dimethyl-4-octene isomer	0.03
11.180	Tricyclene	0.02
11.335	alpha-Thujene	1.97
11.742	alpha-Pinene	9.71
12.514	alpha-Fenchene	0.06
12.607	Camphene	0.33
12.809	Unidentified	0.00
13.486	Unidentified	0.01
13.685	Unidentified	0.02
13.862	Sabinene	2.32
14.154	beta-Pinene	2.28
14.506	6-Methyl hept-5-en-2-one	0.12
14.798	Myrcene	2.16
14.992	6-Methyl hept-5-en-2-ol	0.08
15.395	delta-2-Carene	0.04
15.571	Unidentified	0.01
15.669	Octanal	0.02
15.832	alpha-Phellandrene	0.56
15.983	delta-3-Carene	7.93
16.337	1,4-Cineole	0.01
16.474	alpha-Terpinene	0.68
16.645	ortho-Cymene	0.01
16.972	para-Cymene	6.42
17.293	Limonene	13.90
17.380	beta-Phellandrene	1.13
17.492	1,8-Cineole	32.81
17.570	Unidentified	0.02
17.662	cis-beta-Ocimene	0.03
18.326	trans-beta-Ocimene	0.74
19.094	gamma-Terpinene	1.82
19.877	cis-Linalool oxide (furanoid)	0.03
20.860	Terpinolene	0.12
21.067	Fenchone	0.01
21.820	Linalool	0.08
25.031	Camphor	9.07
26.592	delta-Terpineol	0.03
26.694	Borneol	0.01
27.297	Terpinen-4-ol	0.02
27.738	Cryptone	0.01
28.329	alpha-Terpineol	5.24
34.687	Saffrole	0.12
43.102	alpha-Santalene	0.02
		100.00

Chromatogram Camphor Oil - Revive



Comments:

The analysis of this Camphor Oil batch sample meets the expected chemical profile for authentic essential oil of Cinnamomum camphora.

No contamination or adulteration was detected. The results provided in this GCMS quality analysis reflect the chemical composition of the oil and lot referenced above on the date of analysis.