

Sample Information

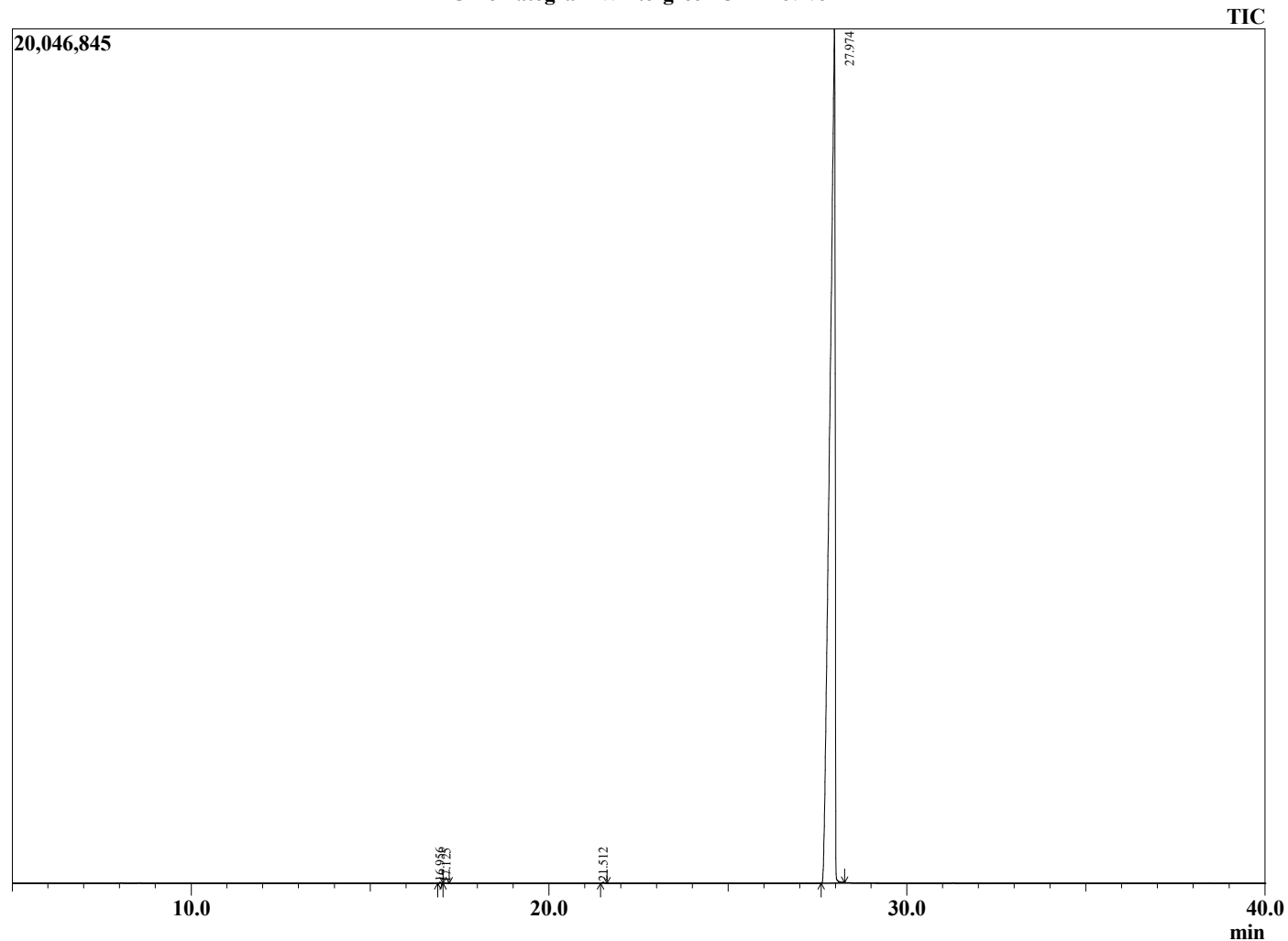
Analyzed by : Dr. Robert S. Pappas
 Analyzed : 5/26/2023 8:38:53 PM
 Sample Type : Essential Oil
 Sample Name : Wintergreen Oil - Revive
 Sample ID : 5H
 Injection Volume : 0.10
 Instrument ID: : GC-2



Peak Report TIC

R.Time	Name	Area%
16.956	Limonene	0.04
17.125	Eucalyptol	0.02
21.512	Linalool	0.05
27.974	Methyl Salicylate	99.90
		100.00

Chromatogram Wintergreen Oil - Revive



Comments:

The analysis of this Wintergreen batch sample meets the expected chemical profile for authentic essential oil of *Gaultheria procumbens*. No contamination or adulteration was detected. The results provided in this GCMS quality analysis reflect the chemical composition of the oil and lot referenced above on the date of analysis.