

Sample Information

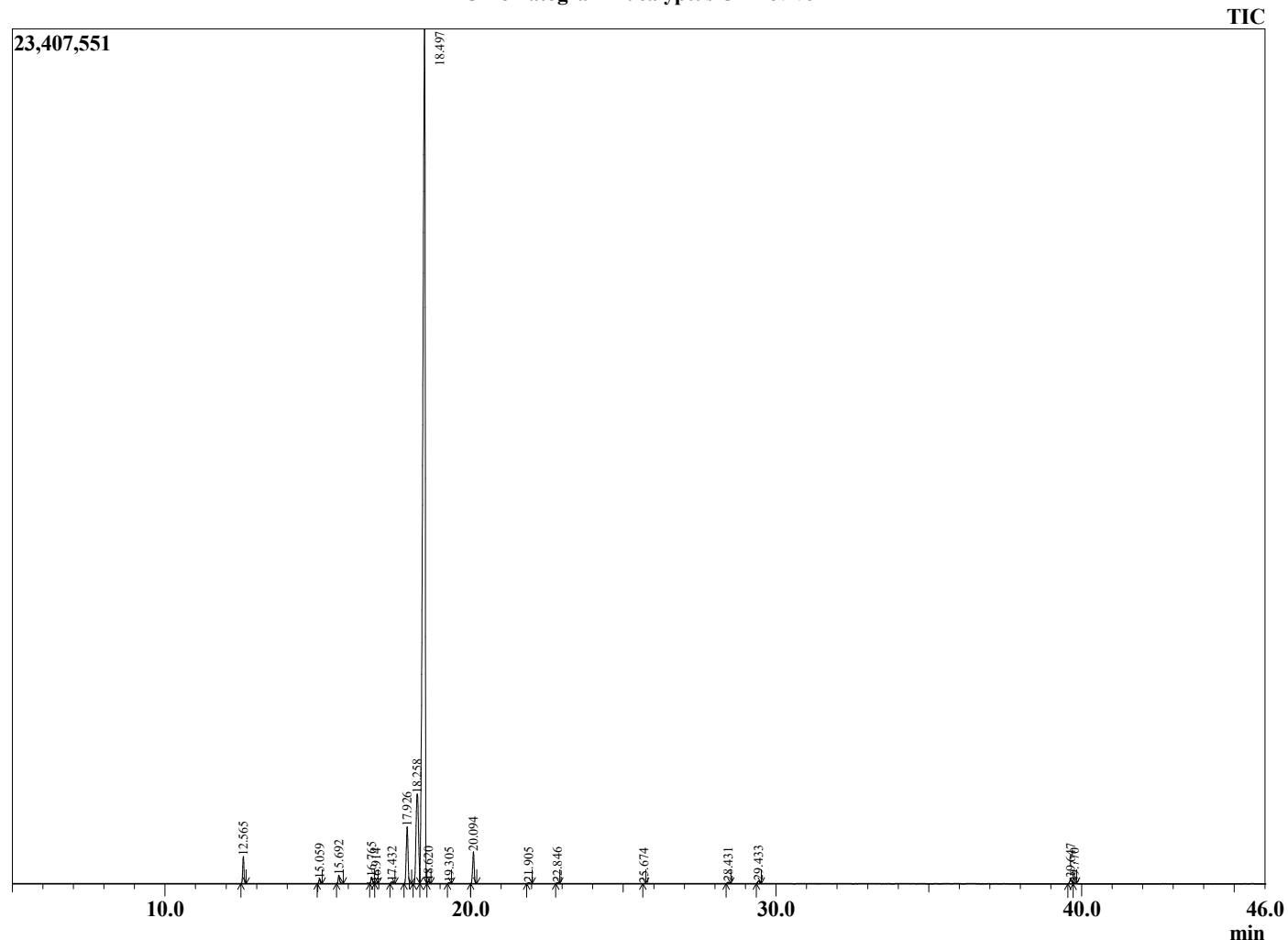
Analyzed by : Dr. Robert S. Pappas
 Analyzed : 6/27/2023 6:39:53 PM
 Sample Type : Essential Oil
 Sample Name : Eucalyptus Oil Revive
 Sample ID : 1J
 Injection Volume : 0.10
 Instrument ID: : GC-3



Peak Report TIC

R.Time	Name	Area%
12.565	alpha-Pinene	1.44
15.059	beta-Pinene	0.26
15.692	Myrcene	0.49
16.765	alpha-Phellandrene	0.38
16.914	delta-3-Carene	0.02
17.432	alpha-Terpinene	0.11
17.926	para-Cymene	3.95
18.258	Limonene	8.88
18.497	1,8-cineole	81.61
18.620	cis-beta-Ocimene	0.12
19.305	trans-beta-Ocimene	0.04
20.094	gamma-Terpinene	1.91
21.905	Terpinolene	0.06
22.846	Linalool	0.04
25.674	trans-Pinocarveol	0.01
28.431	Terpinen-4-ol	0.07
29.433	alpha-Terpineol	0.19
39.647	alpha-Terpinyl acetate	0.37
39.770	gamma-Terpinyl acetate	0.04
		100.00

Chromatogram Eucalyptus Oil Revive



Comments:

The analysis of this Eucalyptus batch sample meets the expected chemical profile for authentic essential oil of *Eucalyptus globulus*. No contamination or adulteration was detected. The results provided in this GCMS quality analysis reflect the chemical composition of the oil and lot referenced above on the date of analysis.