

Sample Information

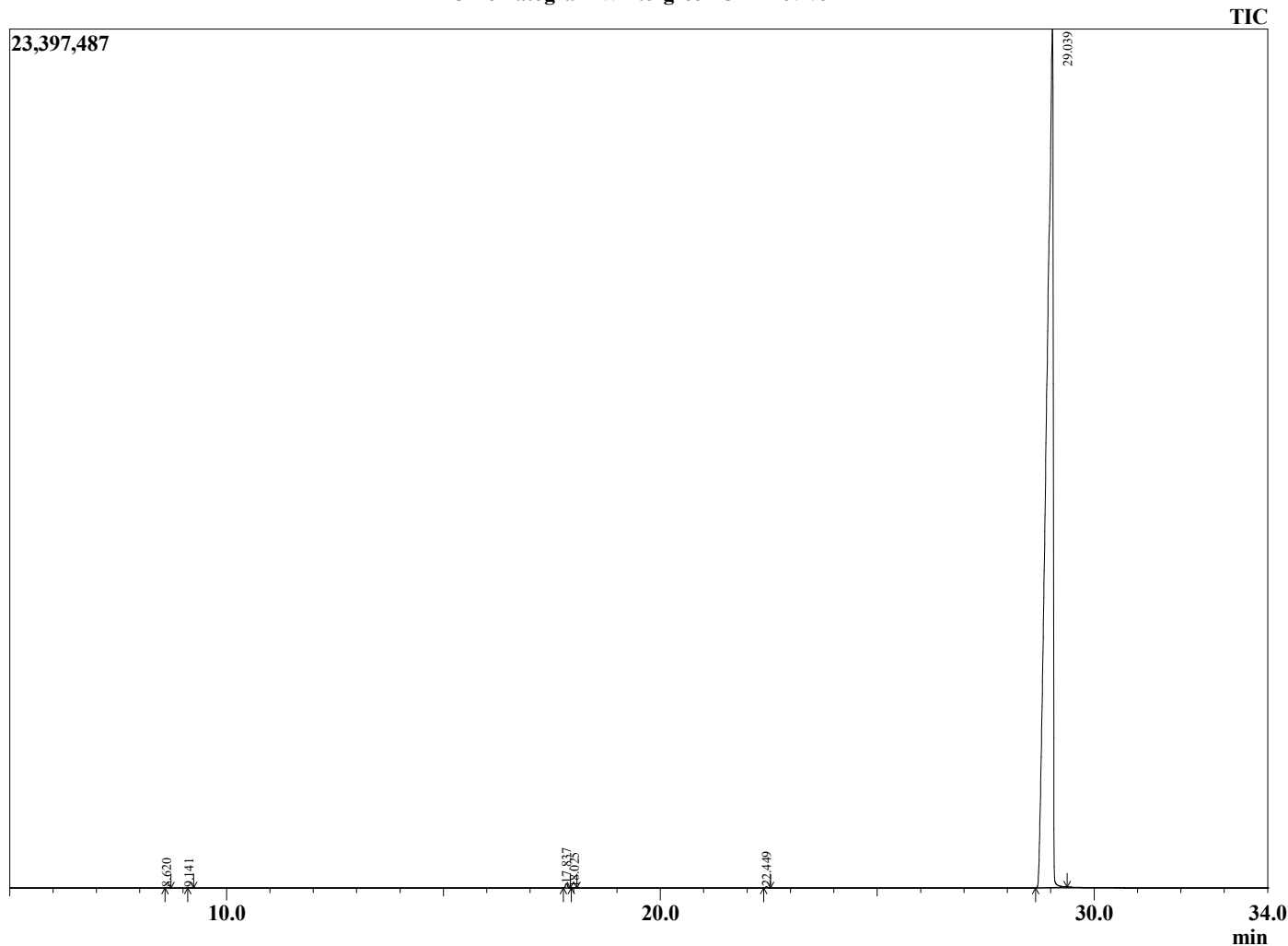
Analyzed by : Dr. Robert S. Pappas
 Analyzed : 11/11/2022 11:24:59 PM
 Sample Type : Essential Oil
 Sample Name : Wintergreen Oil - Revive
 Sample ID : 4A
 Injection Volume : 0.10
 Instrument ID: : GC-4



Peak Report TIC

R.Time	Name	Area%
8.620	Hex-(3Z)-enol	0.02
9.141	Hexanol	0.01
17.837	Limonene	0.17
18.025	1,8-cineole	0.01
22.449	Linalool	0.04
29.039	Methyl salicylate	99.74
		100.00

Chromatogram Wintergreen Oil - Revive



Comments:

The analysis of this Wintergreen batch sample meets the expected chemical profile for authentic essential oil of *Gaultheria procumbens*. No contamination or adulteration was detected. The results provided in this GCMS quality analysis reflect the chemical composition of the oil and lot referenced above on the date of analysis.