

Sample Information

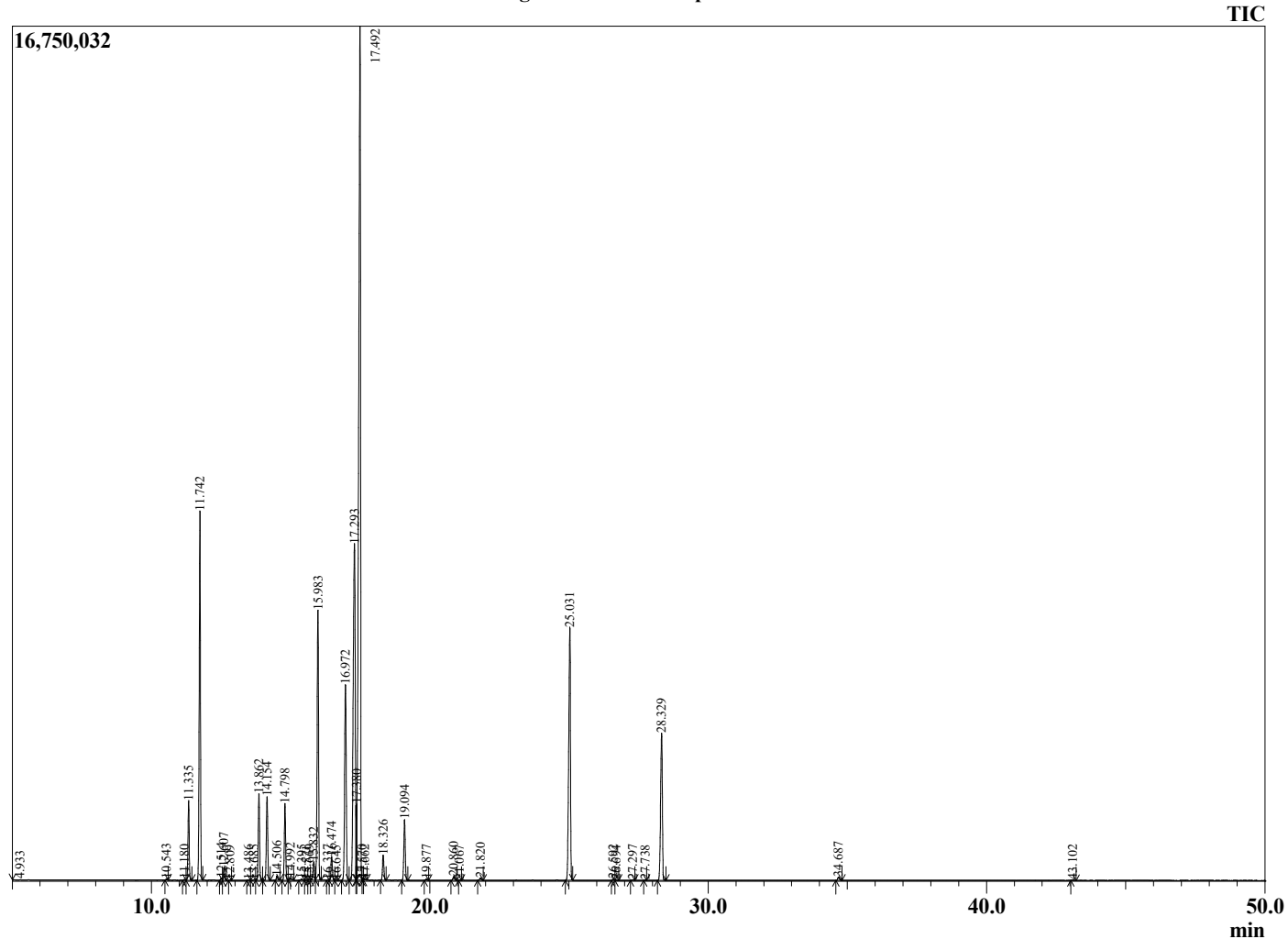
Analyzed by : Dr. Robert S. Pappas
 Analyzed : 8/25/2022 8:47:03 AM
 Sample Type : Essential Oil
 Sample Name : Chinese Camphor Oil - Revive
 Sample ID : 3B
 Injection Volume : 0.10
 Instrument ID : GC-2



Peak Report TIC

R.Time	Name	Area%
4.933	4-Methylpentan-2-one	0.01
10.543	2,6-Dimethyl-4-octene isomer	0.03
11.180	Tricyclene	0.02
11.335	alpha-Thujene	1.97
11.742	alpha-Pinene	9.71
12.514	alpha-Fenchene	0.06
12.607	Camphene	0.33
12.809	Unidentified	0.00
13.486	Unidentified	0.01
13.685	Unidentified	0.02
13.862	Sabinene	2.32
14.154	beta-Pinene	2.28
14.506	6-Methyl hept-5-en-2-one	0.12
14.798	Myrcene	2.16
14.992	6-Methyl hept-5-en-2-ol	0.08
15.395	delta-2-Carene	0.04
15.571	Unidentified	0.01
15.669	Octanal	0.02
15.832	alpha-Phellandrene	0.56
15.983	delta-3-Carene	7.93
16.337	1,4-Cineole	0.01
16.474	alpha-Terpinene	0.68
16.645	ortho-Cymene	0.01
16.972	para-Cymene	6.42
17.293	Limonene	13.90
17.380	beta-Phellandrene	1.13
17.492	1,8-Cineole	32.81
17.570	Unidentified	0.02
17.662	cis-beta-Ocimene	0.03
18.326	trans-beta-Ocimene	0.74
19.094	gamma-Terpinene	1.82
19.877	cis-Linalool oxide (furanoid)	0.03
20.860	Terpinolene	0.12
21.067	Fenchone	0.01
21.820	Linalool	0.08
25.031	Camphor	9.07
26.592	delta-Terpineol	0.03
26.694	Borneol	0.01
27.297	Terpinen-4-ol	0.02
27.738	Cryptone	0.01
28.329	alpha-Terpineol	5.24
34.687	Saffrole	0.12
43.102	alpha-Santalene	0.02
		100.00

Chromatogram Chinese Camphor Oil - Revive



Comments:

The analysis of this Camphor, China batch sample meets the expected chemical profile for authentic essential oil of *Cinnamomum camphora*. No contamination or adulteration was detected. The results provided in this GCMS quality analysis reflect the chemical composition of the oil and lot referenced above on the date of analysis.