

Sample Information

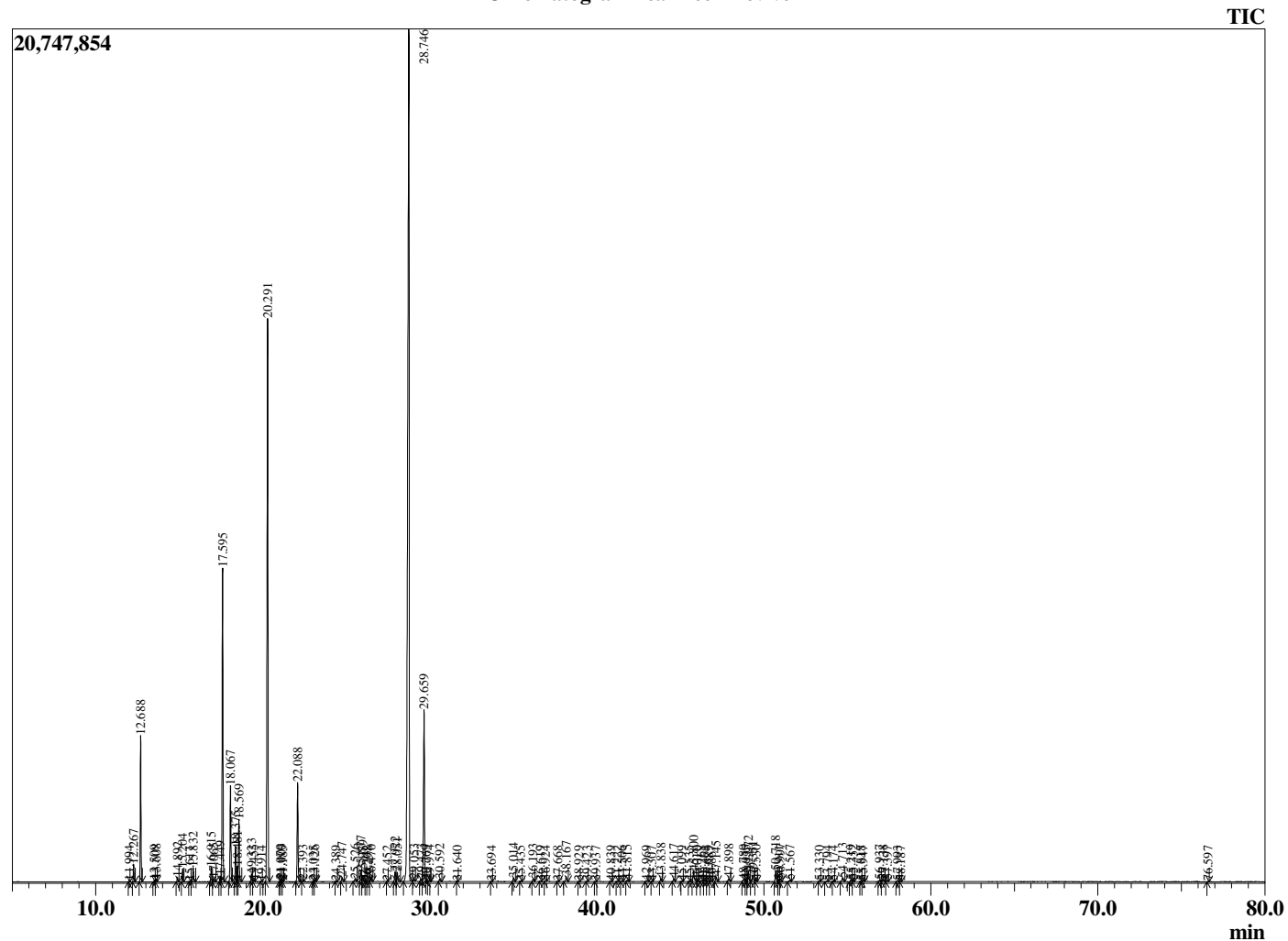
Analyzed by : Dr. Robert S. Pappas  
 Analyzed : 5/27/2021 11:47:36 PM  
 Sample Type : Essential Oil  
 Sample Name : Tea Tree - Revive  
 Sample ID : 1063  
 Injection Volume : 0.10  
 Instrument ID : GC-3



Peak Report TIC

R.Time	Name	Area%
11.994	Hashishene	0.03
12.267	alpha-Thujene	0.43
12.688	alpha-Pinene	3.73
13.509	alpha-Fenchene	0.05
13.608	Camphene	0.08
14.892	Sabinene	0.14
15.204	beta-Pinene	0.37
15.611	3-para-Menthene	0.02
15.832	Myrcene	0.42
16.915	alpha-Phellandrene	0.42
17.065	delta-3-Carene	0.11
17.449	1,4-Cineole	0.17
17.595	alpha-Terpinene	9.48
18.067	para-Cymene	2.84
18.375	Limonene	1.07
18.481	beta-Phellandrene	0.43
18.569	1,8-Cineole	1.88
19.323	2,2-Dimethyl-, 5-(1-methyl-1-propenyl)-tetrah	0.23
19.455	(E)-beta-Ocimene	0.05
19.914	Unidentified	0.02
20.291	gamma-Terpinene	19.03
21.070	trans-Sabinene hydrate	0.04
21.103	meta-Cresol	0.09
21.185	Pinol	0.03
22.088	Terpinolene	3.11
22.393	para-Cymenene	0.05
23.035	Linalool	0.03
23.126	cis-Sabinene hydrate	0.05
24.389	alpha-Fenchol	0.02
24.747	cis-para-Menth-2-en-1-ol	0.15
25.526	Terpin-3-en-1-ol	0.11
25.877	trans-Pinocarveol	0.37
25.979	trans-alpha-Menth-2-en-1-ol	0.21
26.202	Unidentified	0.01
26.298	Camphor	0.02
26.470	trans-beta-Terpineol	0.08
27.452	Isoborneol	0.01
27.922	delta-Terpineol	0.36
28.051	Borneol	0.37
28.746	Terpinen-4-ol	43.27
29.053	para-Cymen-8-ol	0.08
29.473	Unidentified	0.09
29.659	alpha-Terpineol	6.04
29.769	cis-Piperitol	0.01
29.974	gamma-Terpineol	0.06
30.592	trans-Piperitol	0.09
31.640	Unidentified	0.02
33.694	Unidentified	0.01
35.014	cis-Ascridol glycol	0.13
35.435	Unidentified	0.03
36.193	trans-Ascridol glycol	0.10
36.619	Unidentified	0.02
36.924	Unidentified	0.03
37.668	Unidentified	0.02
38.167	Unidentified	0.19
38.929	Unidentified	0.02
39.423	Unidentified	0.01
39.937	alpha-Cubebene	0.02
40.839	Unidentified	0.02
41.222	Unidentified	0.02
41.506	Isoledene	0.04
41.815	alpha-Copaene	0.06

Chromatogram Tea Tree - Revive



Comments:

The analysis of this Tea Tree batch sample meets the expected chemical profile for authentic essential oil of *Melaleuca alternifolia*. No contamination or adulteration was detected. The results provided in this GCMS quality analysis reflect the chemical composition of the oil and lot referenced above on the date of analysis.

R.Time	Name	Area%
42.969	Unidentified	0.05
43.307	Methyleugenol	0.01
43.838	alpha-Gurjunene	0.12
44.617	trans-beta-Caryophyllene	0.12
45.099	Unidentified	0.02
45.535	Unidentified	0.03
45.800	Aromadendrene	0.47
46.010	Unidentified	0.02
46.268	alpha-Guaiene	0.06
46.461	trans-Murrola-3,5-diene	0.04
46.689	Unidentified	0.02
46.867	alpha-Humulene	0.02
47.145	Alloaromadendrene	0.19
47.898	10-beta-H-Cadina-1(6),4-diene	0.11
48.780	Unidentified	0.11
48.935	Unidentified	0.08
49.072	Viridiflorene	0.42
49.351	Bicyclgermacrene	0.24
49.530	alpha-Murolene	0.05
50.718	delta-Cadinene	0.42
50.911	trans-Calamenene	0.05
50.997	Zonarene	0.10
51.567	trans-Cadina-1,4-diene	0.07
53.330	Unidentified	0.04
53.794	Palustrol	0.04
54.174	Spathulenol	0.04
54.713	Globulol	0.16
55.219	Viridiflorol	0.08
55.352	Guaiol	0.06
55.818	Ledol	0.01
55.947	Rosifoliol	0.03
56.937	Unidentified	0.06
57.138	1-epi-Cubenol	0.08
57.397	Unidentified	0.05
57.993	tau-Cadinol	0.04
58.187	delta-Cadinol	0.01
76.597	Unidentified	0.01
		100.00