

Sample Information

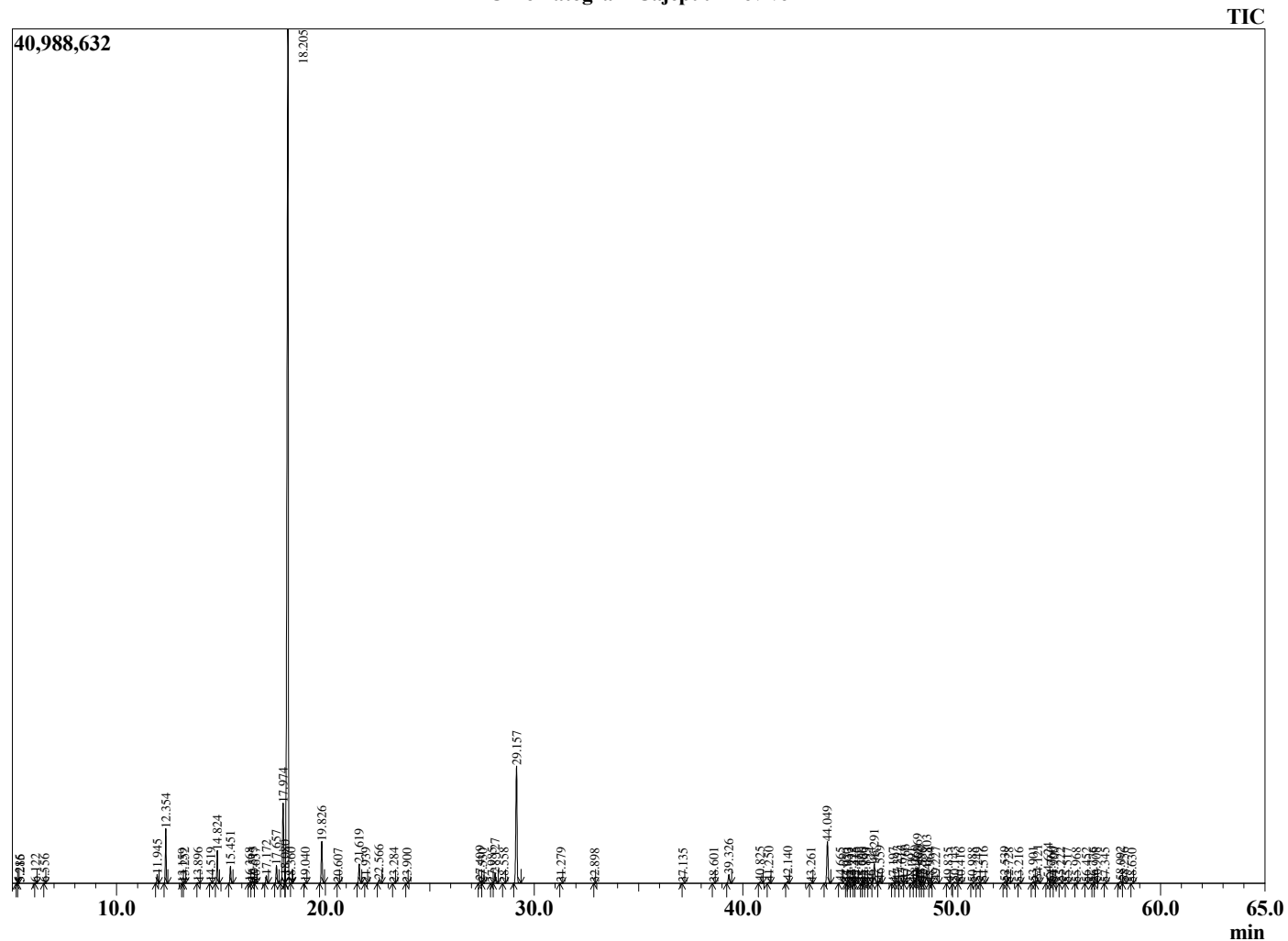
Analyzed by : Dr. Robert S. Pappas  
 Analyzed : 5/26/2021 2:14:32 AM  
 Sample Type : Essential Oil  
 Sample Name : Cajeput - Revive  
 Sample ID : 1099  
 Injection Volume : 0.10  
 Instrument ID: : GC-4



Peak Report TIC

R.Time	Name	Area%
4.066	3-Methylbutanal	0.00
4.168	2-Methylbutanal	0.01
5.215	Isoamyl alcohol	0.00
5.286	2-Methylbutanol	0.00
6.122	Methyl 2-methylbutyrate	0.03
6.556	Acetylbutyryl	0.01
11.945	alpha-Thujene	0.42
12.354	alpha-Pinene	2.59
13.159	alpha-Fenchene	0.01
13.252	Camphene	0.02
13.896	Benzaldehyde	0.05
14.519	Sabinene	0.06
14.824	beta-Pinene	1.72
15.451	Myrcene	0.89
16.368	Pseudolimonene	0.05
16.513	alpha-Phellandrene	0.11
16.657	delta-3-Carene	0.03
17.172	alpha-Terpinene	0.44
17.657	para-Cymene	1.06
17.974	Limonene	5.75
18.080	beta-Phellandrene	0.11
18.205	1,8-cineole	62.37
18.360	(Z)-beta-Ocimene	0.00
19.040	(E)-beta-Ocimene	0.05
19.826	gamma-Terpinene	2.50
20.607	Thujanol analogue	0.01
21.619	Terpinolene	1.19
21.939	para-Cymenene	0.03
22.566	Linalool	0.21
23.284	cis-Rose oxide	0.01
23.900	alpha-Fenchol	0.01
27.409	delta-Terpineol	0.14
27.530	Borneol	0.01
27.985	Unidentified	0.04
28.127	Terpinen-4-ol	0.65
28.558	para-Cymen-8-ol	0.03
29.157	Terpineol	8.08
31.279	Citronellol	0.01
32.898	Neral	0.00
37.135	alpha-Terpinyl formate	0.01
38.601	delta-Elementene	0.03
39.326	alpha-Terpinyl acetate	0.61
40.825	alpha-Ylangene	0.12
41.250	alpha-Copaene	0.08
42.140	beta-Elementene	0.13
43.261	alpha-Gurjunene	0.04
44.049	trans-beta-Caryophyllene	3.08
44.665	gamma-Elementene	0.08
44.950	Unidentified	0.01
45.033	alpha-Guaiene	0.01
45.222	Aromadendrene	0.06
45.325	Unidentified	0.02
45.416	6,9-Guaiadiene	0.04
45.690	Unidentified	0.01
45.766	trans-Murrola-3,5-diene	0.03
45.893	Unidentified	0.03
46.124	Valerna-4,7(11)-diene	0.02
46.291	alpha-Humulene	1.39
46.559	Alloaromadendrene	0.17
47.197	Unidentified	0.02
47.393	Unidentified	0.16
47.616	Unidentified	0.20

Chromatogram Cajeput - Revive



Comments:

The analysis of this Cajeput batch sample meets the expected chemical profile for authentic essential oil of *Melaleuca cajuputi*. No contamination or adulteration was detected. The results provided in this GCMS quality analysis reflect the chemical composition of the oil and lot referenced above on the date of analysis.

R.Time	Name	Area%
47.766	alpha-Amorphene	0.23
48.091	Unidentified	0.03
48.260	delta-Selinene	0.21
48.369	beta-Selinene	1.07
48.490	Viridiflorene	0.15
48.586	trans-Murrola-4(14),5-diene	0.06
48.803	alpha-Selinene	1.00
48.964	alpha-Murolene	0.05
49.227	delta-Amorphene	0.19
49.835	gamma-Cadinene	0.05
50.143	delta-Cadinene	0.15
50.416	Zonarene	0.02
50.988	Unidentified	0.02
51.249	Selina-4(15),7(11)-diene	0.07
51.516	Selina-3,7(11)-diene	0.09
52.539	Germacrene B	0.10
52.728	Unidentified	0.02
53.216	Unidentified	0.01
53.901	Caryophyllene oxide	0.12
54.121	Globulol	0.24
54.624	Viridiflorol	0.43
54.760	Guaiol	0.09
54.900	Unidentified	0.01
55.222	Unidentified	0.05
55.517	Humulene epoxide II	0.04
55.968	Unidentified	0.02
56.452	Unidentified	0.04
56.776	gamma-Eudesmol	0.04
56.908	Unidentified	0.07
57.345	tau-Cadinol	0.01
58.092	alpha-Eudesmol	0.19
58.256	Unidentified	0.06
58.630	Bulnesol	0.01
		100.00