

Sample Information

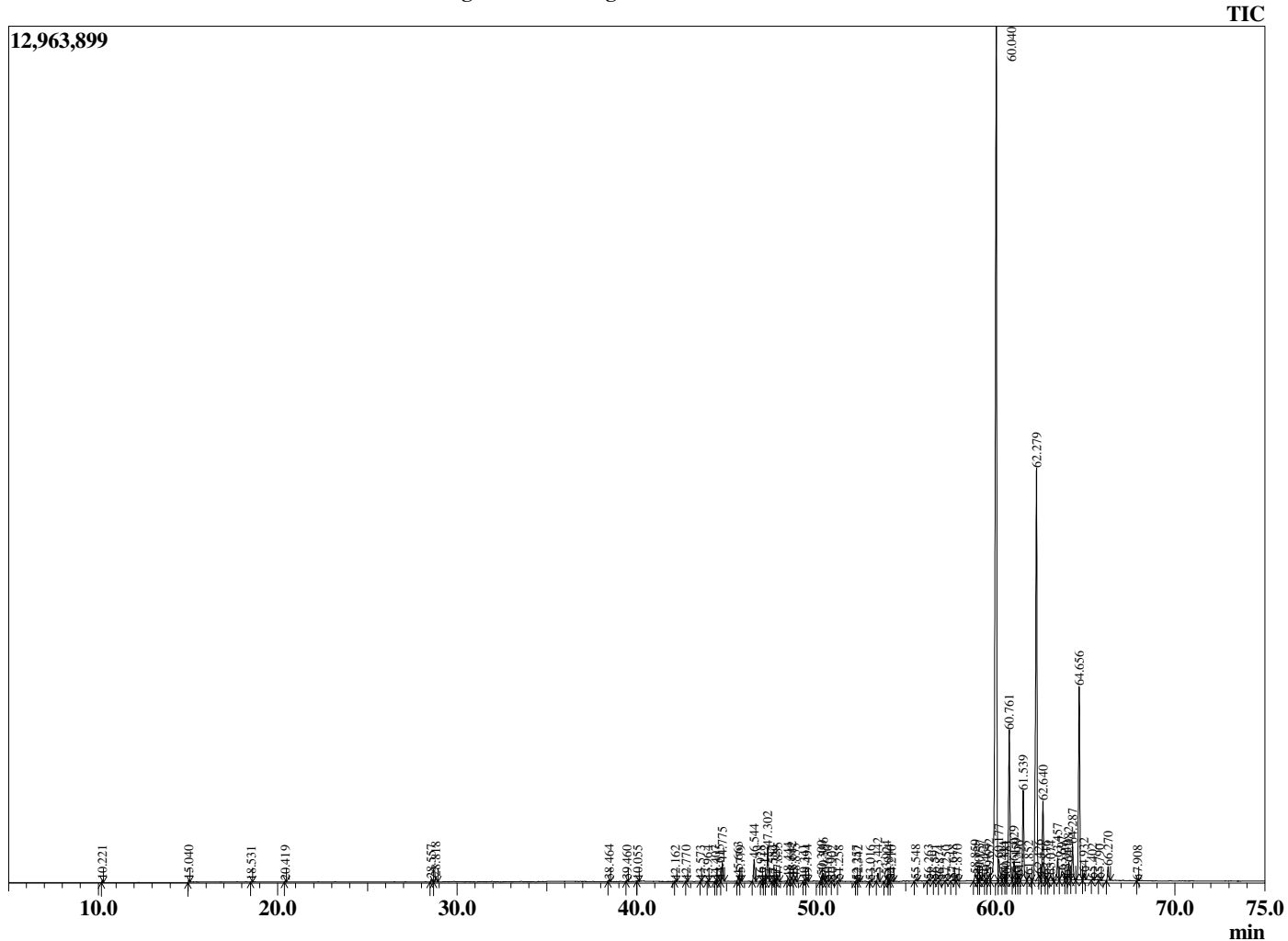
Analyzed by : Dr. Robert S. Pappas
 Analyzed : 4/17/2021 4:40:39 AM
 Sample Type : Essential Oil
 Sample Name : Pacific High Altitude Sandalwood - Revive
 Sample ID : 1131
 Injection Volume : 0.10
 Instrument ID: : GC-3



Peak Report TIC

R.Time	Name	Area%
10.221	Santene	0.06
15.040	Sabinene	0.06
18.531	Limonene	0.01
20.419	gamma-Terpinene	0.02
28.557	Furfuryl pyrrole	0.10
28.818	Terpinen-4-ol	0.17
38.464	Unidentified	0.05
39.460	Unidentified	0.05
40.055	beta-Terpinyl acetate	0.02
42.162	Unidentified	0.03
42.770	Unidentified	0.01
43.573	Unidentified	0.01
43.964	Unidentified	0.01
44.407	Unidentified	0.02
44.615	alpha-Cedrene	0.05
44.775	alpha-Santalene	0.71
45.663	trans-alpha-Bergamotene	0.17
45.779	Unidentified	0.03
46.544	epi-beta-Santalene	0.82
46.928	Unidentified	0.02
47.112	Unidentified	0.03
47.302	beta-Santalene	1.28
47.582	alpha-Acoradiene	0.02
47.729	beta-Acoradiene	0.01
47.855	Unidentified	0.15
48.444	gamma-Curcumene	0.12
48.642	Ar-Curcumene	0.16
48.835	(Z,E)-alpha-Farnesene	0.12
49.341	Unidentified	0.06
49.494	alpha-Zingiberene	0.07
50.300	beta-Bisabolene	0.17
50.396	beta-Curcumene	0.32
50.630	Sesquicineole	0.04
50.902	Unidentified	0.03
51.258	beta-Sesquiphellandrene	0.03
52.257	Unidentified	0.02
52.342	Unidentified	0.04
53.016	Unidentified	0.02
53.442	(E)-Nerolidol	0.30
53.924	Dendralasin	0.25
54.044	Unidentified	0.05
54.210	Unidentified	0.05
55.548	Guaiol	0.08
56.263	Cedrol	0.05
56.591	Unidentified	0.04
56.874	Unidentified	0.01
57.250	Unidentified	0.02
57.618	alpha-Acorenol	0.08
57.870	beta-Acorenol	0.06
58.859	Khusilal	0.35
59.073	Unidentified	0.09
59.157	(E)-alpha-Santalal	0.23
59.464	Bulnesol	0.11
59.652	Unidentified	0.37
60.040	(Z)-alpha-Santalol	42.40
60.177	(Z)-alpha-Santalal	1.15
60.444	Unidentified	0.21
60.581	alpha-Bisabolol	0.24
60.761	(Z)-alpha-trans-Bergamotol	7.08
61.029	Unidentified	0.86
61.159	(E)-alpha-Santalol	0.34
61.296	Unidentified	0.19

Chromatogram Pacific High Altitude Sandalwood - Revive



Comments:

The analysis of this Sandalwood, High Altitude batch sample meets the expected chemical profile for authentic essential oil of *Santalum paniculatum*. No contamination or adulteration was detected. The results provided in this GCMS quality analysis reflect the chemical composition of the oil and lot referenced above on the date of analysis.

R.Time	Name	Area%
61.539	(Z)-epi-beta-Santalol	3.80
61.852	(E)-alpha-trans-Bergamotol	0.35
62.279	(2E,6E)-Farnesol + (Z)-beta-Santalol	19.39
62.426	Unidentified	0.04
62.640	(Z)-Nuciferol	3.30
62.816	(E)-epi-beta-Santalol	0.20
63.074	Unidentified	0.27
63.457	(E)-beta-Santalol	0.89
63.697	Unidentified	0.80
63.949	Unidentified	0.22
64.082	Santalol acetate isomer	0.73
64.287	(E)-Nuciferol	1.42
64.656	cis-Lanceol	7.98
64.932	Unidentified	0.31
65.402	Unidentified	0.05
65.790	Unidentified	0.03
66.270	Lanceol isomer	0.52
67.908	Unidentified	0.01
		100.00