

Sample Information

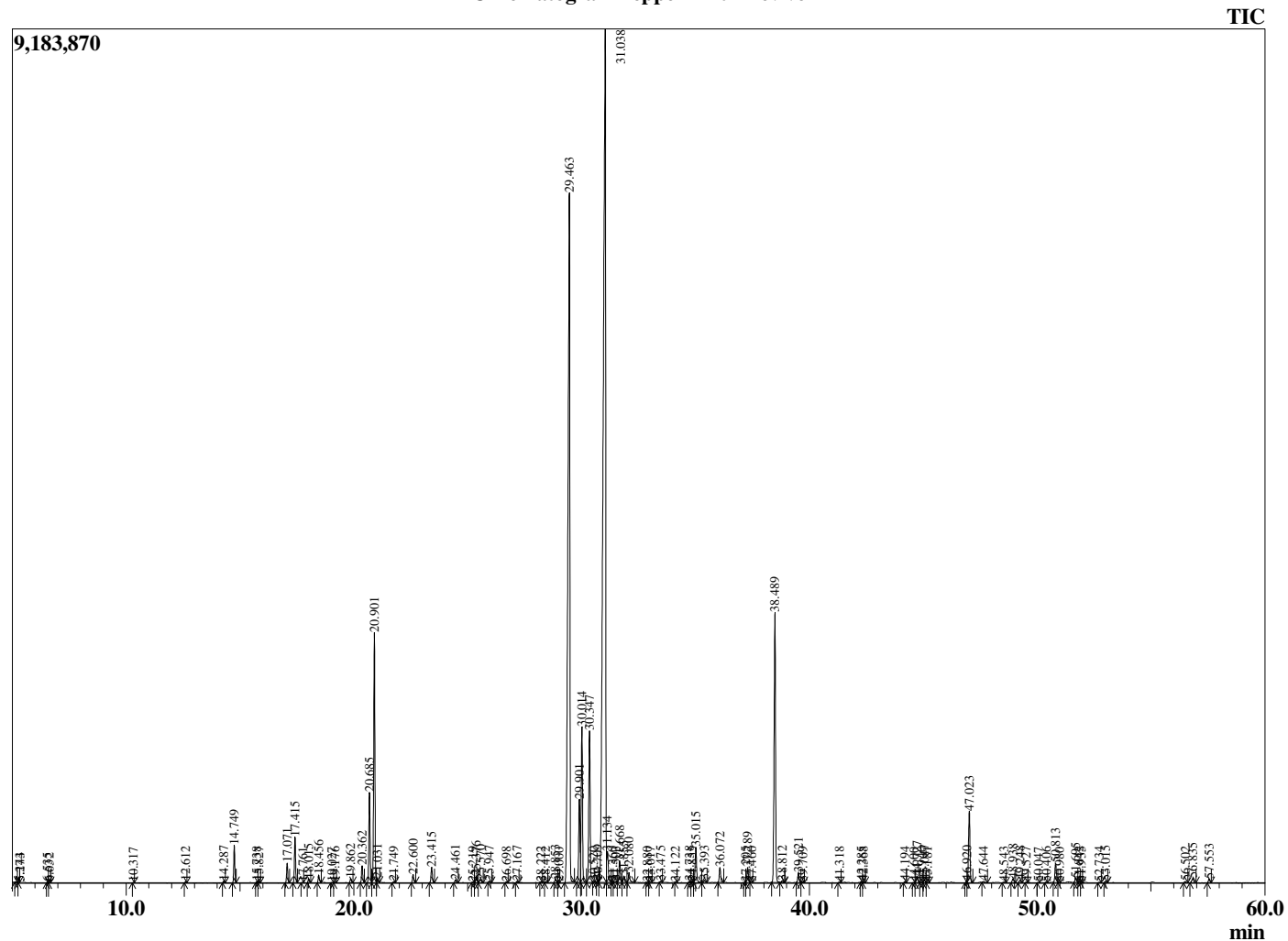
Analyzed by : Dr. Robert S. Pappas  
 Analyzed : 3/10/2021 2:33:17 AM  
 Sample Type : Essential Oil  
 Sample Name : Peppermint - Revive  
 Sample ID : 0321  
 Injection Volume : 0.10  
 Instrument ID : GC-2



Peak Report TIC

R.Time	Name	Area%
5.143	3-Methylbutanal	0.01
5.274	2-Methylbutanal	0.00
6.535	Isoamyl alcohol	0.01
6.632	2-Methyl butanol	0.01
10.317	Ethyl 2-methylbutyrate	0.00
12.612	2,5-Diethyltetrahydrofuran	0.02
14.287	alpha-Thujene	0.03
14.749	alpha-Pinene	0.72
15.738	Camphene	0.02
15.827	3-Methylcyclohexanone	0.02
17.071	Sabinene	0.40
17.415	beta-Pinene	0.96
17.761	3-Octanone	0.01
18.015	Myrcene	0.08
18.456	3-Octanol	0.17
19.027	Pseudolimonene	0.01
19.176	alpha-Phellandrene	0.01
19.862	alpha-Terpinene	0.09
20.362	para-Cymene	0.39
20.685	Limonene	2.03
20.901	1,8-Cineole	5.53
21.031	(Z)-beta-Ocimene	0.09
21.749	(E)-beta-Ocimene	0.02
22.600	gamma-Terpinene	0.18
23.415	trans-Sabinene hydrate	0.37
24.461	Terpinolene	0.07
25.219	3-Nonanol	0.01
25.376	Linalool	0.15
25.570	2-Methylbutyl-2-methylbutyrate	0.10
25.947	2-Methylbutyl isovalerate	0.04
26.698	3-Octyl acetate	0.02
27.167	cis-para-Menth-2-en-1-ol	0.03
28.222	trans-Sabinol	0.02
28.412	trans-para-Menth-2-en-1-ol	0.03
28.853	Isopulegol	0.09
29.000	Unidentified	0.01
29.463	Menthone	24.25
29.901	Menthofuran	2.05
30.014	Isomenthone	3.74
30.347	Neomenthol	3.98
30.520	Borneol	0.00
30.709	trans-Isopulegone	0.03
31.038	Menthol	39.22
31.134	Terpinen-4-ol	0.86
31.360	Unidentified	0.03
31.503	para-Cymen-8-ol	0.03
31.668	Isomenthol	0.53
31.855	Neoisomenthol	0.17
32.080	alpha-Terpineol	0.28
32.880	Unidentified	0.01
33.017	cis-Piperitol	0.02
33.475	Unidentified	0.03
34.122	Citronellol	0.01
34.738	Hex-(3Z)-enyl isovalerate	0.03
34.855	Unidentified	0.02
35.015	Pulegone	0.95
35.393	Carvone	0.06
36.072	Piperitone	0.39
37.205	Isopulegyl acetate	0.01
37.289	Neomenthyl acetate	0.40
37.460	cis-Ascrinol glycol	0.02
38.489	Menthyl acetate	7.19

Chromatogram Peppermint - Revive



Comments:

The analysis of this Peppermint batch sample meets the expected chemical profile for authentic essential oil of *Mentha piperita*. No contamination or adulteration was detected. The results provided in this GCMS quality analysis reflect the chemical composition of the oil and lot referenced above on the date of analysis.

R.Time	Name	Area%
38.812	Unidentified	0.04
39.521	Isomenthyl acetate	0.25
39.709	Unidentified	0.02
41.318	delta-Elemene	0.02
42.285	Unidentified	0.02
42.368	Unidentified	0.03
44.194	alpha-Copaene	0.02
44.600	Unidentified	0.01
44.727	beta-Bourbonene	0.17
44.940	alpha-Bourbonene	0.02
45.047	beta-Elemene	0.08
45.181	Unidentified	0.02
46.920	beta-Ylangene	0.03
47.023	trans-beta-Caryophyllene	1.93
47.644	beta-Copaene	0.04
48.543	6,9-Guanidiene	0.02
48.938	(E)-beta-Farnesene	0.10
49.248	alpha-Humulene	0.06
49.527	Alloaromodendrene	0.01
50.047	Unidentified	0.01
50.406	trans-Cadina-1(6),4-diene	0.01
50.813	Germacrene D	0.52
50.980	Unidentified	0.01
51.695	Bicyclogermacrene	0.12
51.842	alpha-Murolene	0.02
51.935	Unidentified	0.01
52.734	gamma-Cadinene	0.01
53.015	delta-Cadinene	0.05
56.502	Spathulenol	0.04
56.835	Caryophyllene oxide	0.15
57.553	Viridiflorol	0.10
		100.00