

Sample Information

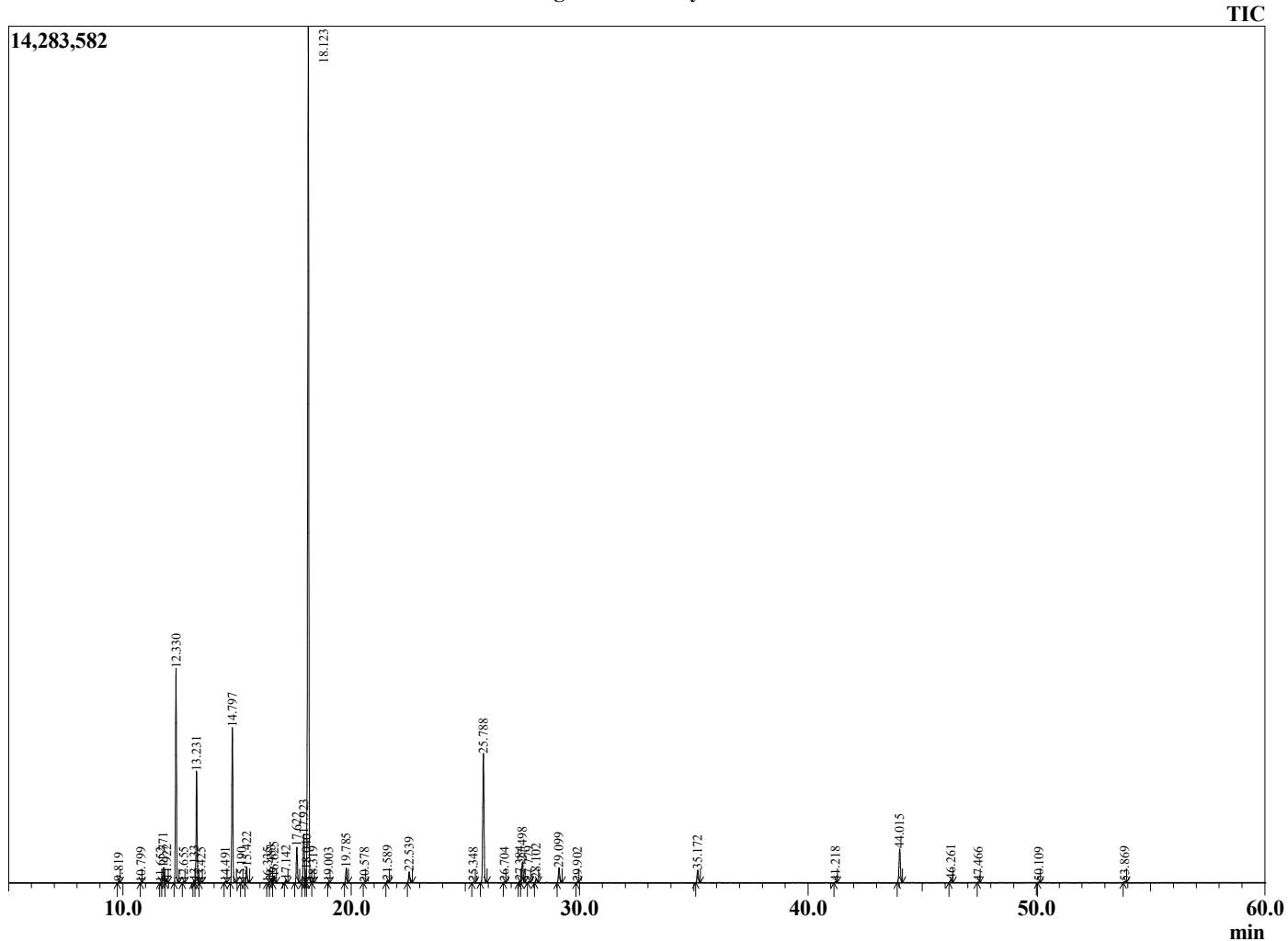
Analyzed by : Dr. Robert S. Pappas
 Analyzed : 3/6/2021 7:32:32 AM
 Sample Type : Essential Oil
 Sample Name : Rosemary Oil - Revive
 Sample ID : 0073
 Injection Volume : 0.10
 Instrument ID : GC-4



Peak Report TIC

R.Time	Name	Area%
9.819	Santene	0.07
10.799	Unidentified	0.01
11.652	Hashishene	0.02
11.771	Tricyclene	0.74
11.922	alpha-Thujene	0.15
12.330	alpha-Pinene	10.51
12.655	beta-Fenchene	0.05
13.133	alpha-Fenchene	0.10
13.231	Camphene	5.70
13.425	Thuja-2,4(10)diene	0.03
14.491	Sabinene	0.05
14.797	beta-Pinene	8.30
15.190	3-Octanone	0.03
15.422	Myrcene	0.87
16.335	Pseudolimonene	0.02
16.483	alpha-Phellandrene	0.17
16.625	delta-3-Carene	0.33
17.142	alpha-Terpinene	0.15
17.622	para-Cymene	2.12
17.923	Limonene	2.96
18.040	beta-Phellandrene	0.31
18.123	1,8-Cineole	50.41
18.319	cis-beta-Ocimene	0.06
19.003	trans-beta-Ocimene	0.01
19.785	gamma-Terpinene	0.86
20.578	trans-Sabinene hydrate	0.01
21.589	Terpinolene	0.13
22.539	Linalool	0.69
25.348	trans-Pinocarveol	0.02
25.788	Camphor	8.57
26.704	Pinocamphone	0.03
27.384	delta-Terpineol	0.09
27.498	Borneol	1.38
27.779	Isopinocampnone	0.05
28.102	Terpinen-4-ol	0.26
29.099	alpha-Terpineol	1.01
29.902	Verbenone	0.03
35.172	Bornyl acetate	0.89
41.218	alpha-Copaene	0.07
44.015	beta-Caryophyllene	2.42
46.261	alpha-Humulene	0.22
47.466	trans-Cadina-1(6),4-diene	0.03
50.109	delta-Cadinene	0.03
53.869	Caryophyllene oxide	0.05
		100.00

Chromatogram Rosemary Oil - Revive



Comments:

The analysis of this Rosemary batch sample meets the expected chemical profile for authentic essential oil of *Rosmarinus officinalis*. No contamination or adulteration was detected. The results provided in this GCMS quality analysis reflect the chemical composition of the oil and lot referenced above on the date of analysis.