

Sample Information

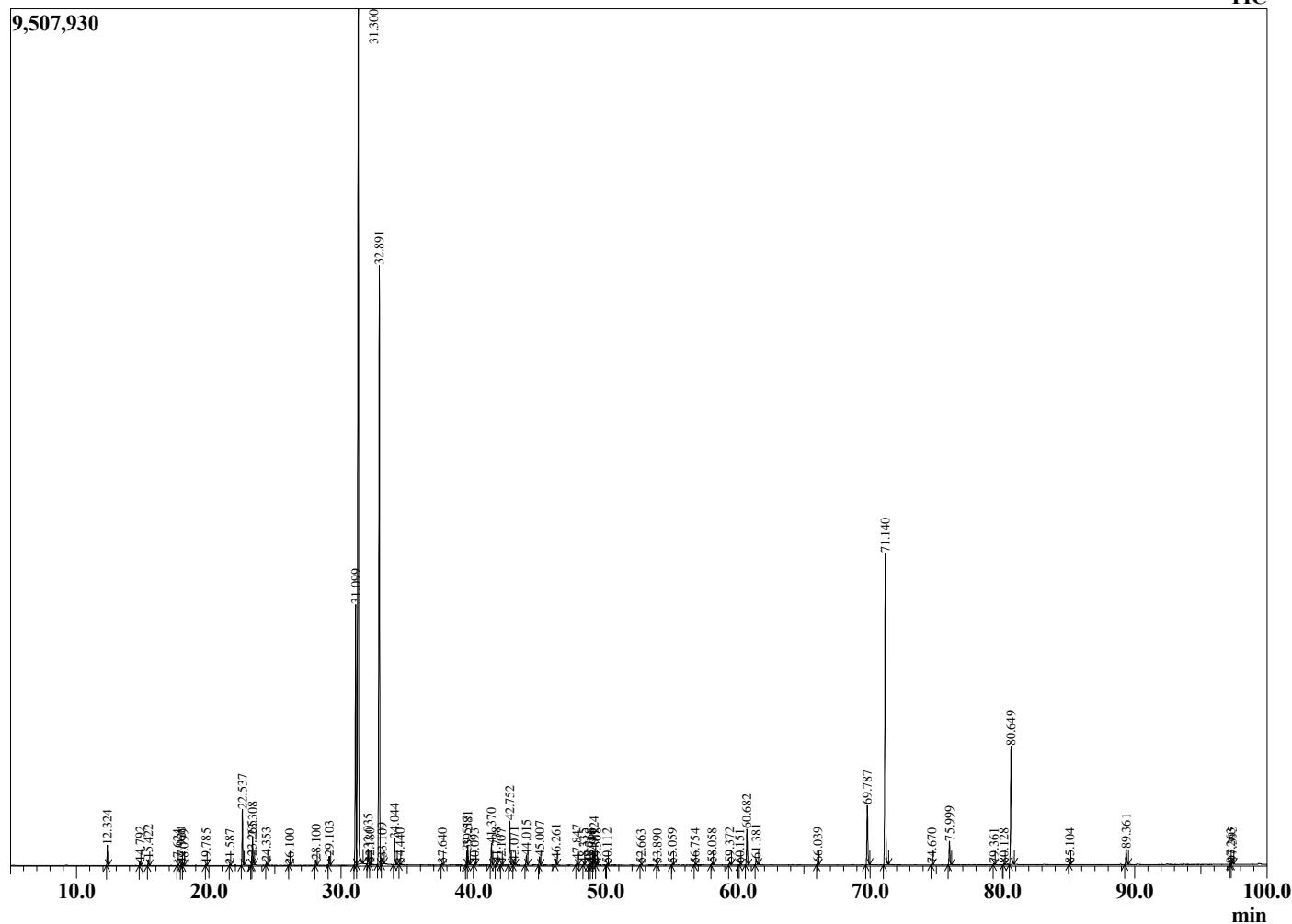
Analyzed by : Dr. Robert S. Pappas
 Analyzed : 3/5/2021 11:19:15 AM
 Sample Type : Essential Oil
 Sample Name : Rose - Revive
 Sample ID : 0294
 Injection Volume : 0.10
 Instrument ID: : GC-4



Peak Report TIC

R.Time	Name	Area%
12.324	alpha-Pinene	0.50
14.792	beta-Pinene	0.11
15.422	Myrcene	0.17
17.624	para-Cymene	0.02
17.920	Limonene	0.08
18.099	1,8-Cineole	0.02
19.785	gamma-Terpinene	0.04
21.587	Terpinolene	0.02
22.537	Linalool	1.73
23.265	cis-Rose oxide	0.21
23.308	Phenethyl alcohol	0.92
24.353	trans-Rose oxide	0.10
26.100	Unidentified	0.02
28.100	Terpinen-4-ol	0.18
29.103	alpha-Terpineol	0.31
31.099	Nerol	8.63
31.300	Citronellol	34.01
32.035	Neral	0.52
32.180	Unidentified	0.03
32.891	Geraniol	21.94
33.109	2-Phenethyl acetate	0.26
34.044	Geranial	0.95
34.440	Citronellyl formate	0.03
37.640	Methyl geranate	0.05
39.513	Citronellyl acetate	0.45
39.581	Eugenol	0.66
40.093	Neryl acetate	0.03
41.370	Geranyl acetate	0.76
41.738	beta-Bourbonene	0.07
42.107	beta-Elemene	0.04
42.752	Methyleugenol	1.49
43.071	cis-beta-Caryophyllene	0.11
44.015	trans-beta-Caryophyllene	0.37
45.007	alpha-Guaiene	0.32
46.261	alpha-Humulene	0.21
47.847	Germacrene D	0.18
48.335	beta-Selinene	0.03
48.768	Unidentified	0.07
48.946	Unidentified	0.03
49.124	Unidentified	0.52
49.308	(E,E)-alpha-Farnesene	0.03
50.112	delta-Cadinene	0.03
52.663	trans-Nerolidol	0.02
53.890	Caryophyllene oxide	0.01
55.059	Hexadecane	0.05
56.754	gamma-Eudesmol	0.03
58.058	Cubenol	0.07
59.372	Unidentified	0.11
60.151	Unidentified	0.01
60.682	Heptadecane	1.36
61.381	(2E,6E)-Farnesol	0.25
66.039	Octadecane	0.09
69.787	(Z)-9-Nonadecene	2.53
71.140	Nonadecane	12.37
74.670	Unidentified	0.04
75.999	Eicosane	0.94
79.361	Unidentified	0.03
80.128	Unidentified	0.04
80.649	Heneicosane	4.96
85.104	Docosane	0.04
89.361	Tricosane	0.68
97.263	Unidentified	0.02

Chromatogram Rose - Revive



Comments:

The analysis of this Rose batch sample meets the expected chemical profile for authentic essential oil of *Rosa damascena*. No contamination or adulteration was detected. The results provided in this GCMS quality analysis reflect the chemical composition of the oil and lot referenced above on the date of analysis.

R.Time	Name
97.395	Pentacosane

Area%
0.11
100.00