

Sample Information

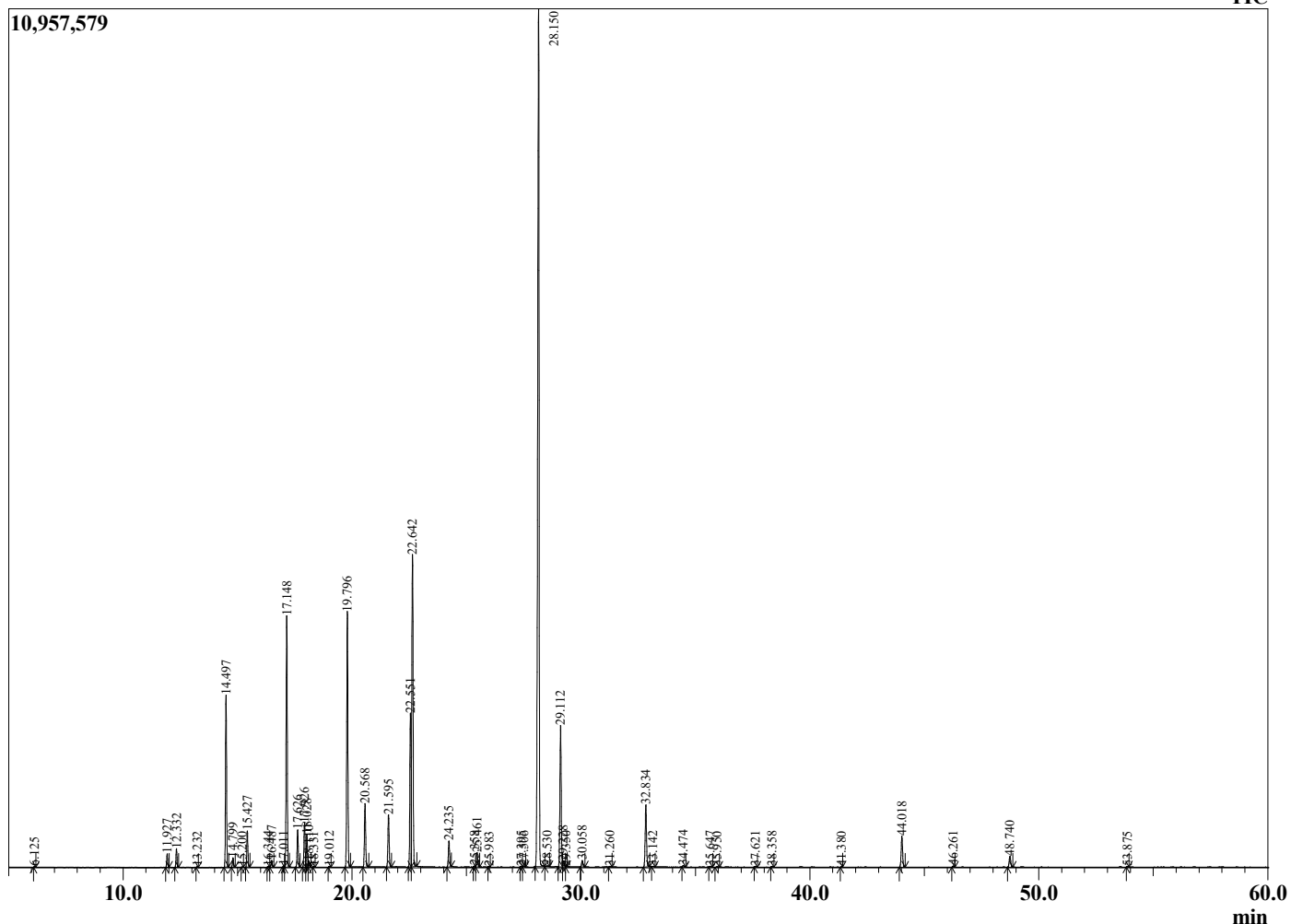
Analyzed by : Dr. Robert S. Pappas
 Analyzed : 3/6/2021 5:36:25 AM
 Sample Type : Essential Oil
 Sample Name : Marjoram - Revive
 Sample ID : 8405
 Injection Volume : 0.10
 Instrument ID : GC-4



Peak Report TIC

R.Time	Name	Area%
6.125	Methyl 2-methylbutyrate	0.02
11.927	alpha-Thujene	0.38
12.332	alpha-Pinene	0.53
13.232	Camphene	0.02
14.497	Sabinene	5.34
14.799	beta-Pinene	0.30
15.200	Unidentified	0.01
15.427	Myrcene	1.15
16.344	Pseudolimonene	0.03
16.487	alpha-Phellandrene	0.23
17.011	1,4-Cineole	0.04
17.148	alpha-Terpinene	8.45
17.626	para-Cymene	1.23
17.926	Limonene	1.48
18.028	beta-Phellandrene	1.11
18.110	1,8-Cineole	0.19
18.331	cis-beta-Ocimene	0.01
19.012	trans-beta-Ocimene	0.03
19.796	gamma-Terpinene	8.86
20.568	trans-Sabinene hydrate	2.34
21.595	Terpinolene	1.90
22.551	Linalool	5.21
22.642	cis-Sabinene hydrate	12.03
24.235	cis-para-Menth-2-en-1-ol	0.95
25.358	trans-Pinocarveol	0.04
25.461	trans-para-Menth-2-en-1-ol	0.57
25.983	Unidentified	0.01
27.395	delta-Terpineol	0.03
27.506	Borneol	0.03
28.150	Terpinen-4-ol	36.87
28.530	para-Cymen-8-ol	0.05
29.112	alpha-Terpineol	5.48
29.228	cis-Piperitol	0.24
29.350	Unidentified	0.01
30.058	Unidentified	0.27
31.260	Citronellol	0.03
32.834	Linalyl acetate	2.46
33.142	Unidentified	0.02
34.474	Unidentified	0.06
35.647	Unidentified	0.03
35.950	4-Terpinenyl acetate	0.02
37.621	Unidentified	0.03
38.358	delta-Elementene	0.03
41.380	Geranyl acetate	0.01
44.018	beta-Caryophyllene	1.29
46.261	alpha-Humulene	0.04
48.740	Bicyclogermacrene	0.49
53.875	Caryophyllene oxide	0.01
		100.00

Chromatogram Marjoram - Revive



Comments:

The analysis of this Marjoram batch sample meets the expected chemical profile for authentic essential oil of *Origanum majorana*. No contamination or adulteration was detected. The results provided in this GCMS quality analysis reflect the chemical composition of the oil and lot referenced above on the date of analysis.