

Sample Information

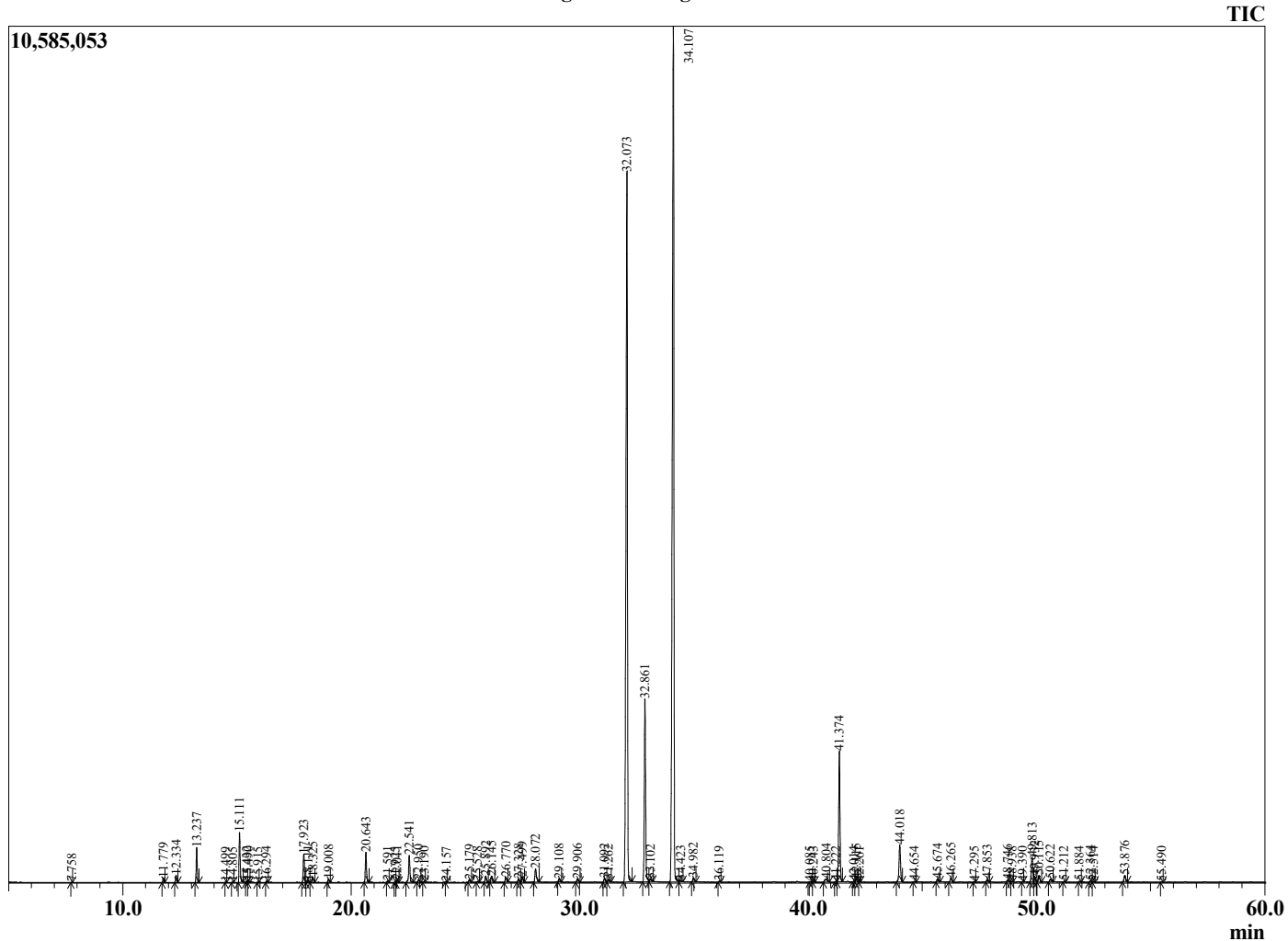
Analyzed by : Dr. Robert S. Pappas
 Analyzed : 3/5/2021 7:26:45 AM
 Sample Type : Essential Oil
 Sample Name : Lemongrass - Revive
 Sample ID : 0329
 Injection Volume : 0.10
 Instrument ID: : GC-4



Peak Report TIC

R.Time	Name	Area%
3.650	2-Methyl 3-buten-2-ol	0.03
4.078	3-Methylbutanal	0.01
7.758	Unidentified	0.01
11.779	Tricyclene	0.13
12.334	alpha-Pinene	0.22
13.237	Camphene	1.07
14.499	Sabinene	0.01
14.805	beta-Pinene	0.01
15.111	6-Methyl hept-5-en-2-one	1.60
15.432	Myrcene	0.04
15.490	dehydro-1,8-Cineole	0.04
15.915	trans-Dehydroxylinalool oxide	0.01
16.294	Octanal	0.05
17.923	Limonene	0.98
18.111	1,8-Cineole	0.08
18.325	cis-beta-Ocimene	0.17
19.008	trans-beta-Ocimene	0.11
20.643	4-Nonanone	1.06
21.591	Terpinolene	0.04
21.925	4-Nonanol	0.02
22.011	Rosefuran	0.08
22.541	Linalool	1.06
22.950	alpha-Pinene oxide	0.10
23.190	Unidentified	0.03
24.157	Unidentified	0.01
25.179	Epiphotocitral A	0.11
25.528	Unidentified	0.03
25.892	trans-Chrysanthemal	0.23
26.145	Citronellal	0.25
26.770	Isoneral	0.21
27.328	Isoborneol	0.14
27.499	Borneol	0.20
28.072	Isogeranial	0.62
29.108	alpha-Terpineol	0.12
29.906	Decanal	0.14
31.092	Nerol	0.16
31.262	Citronellol	0.11
32.073	Neral	31.35
32.861	Geraniol	7.20
33.102	Piperitone	0.12
34.107	Geranial	41.68
34.423	4-Undecanone	0.07
34.982	trans-Carvone oxide	0.16
36.119	Geranyl formate	0.04
40.085	Neryl acetate	0.01
40.243	Unidentified	0.02
40.804	Isoledene	0.23
41.222	alpha-Copaene	0.02
41.374	Geranyl acetate	5.13
42.014	beta-Cubebene	0.03
42.115	beta-Elemene	0.13
42.261	Unidentified	0.01
44.018	beta-Caryophyllene	1.68
44.654	beta-Copaene	0.02
45.674	trans-Isoeugenol	0.14
46.265	alpha-humulene	0.19
47.295	trans-Cadina-1(6),4-diene	0.01
47.853	Germacrene D	0.11
48.746	4-epi-Cubebol	0.09
48.938	alpha-Murolene	0.02
49.390	alpha-Chamigrene	0.01
49.813	gamma-Cadinene	1.09

Chromatogram Lemongrass - Revive



Comments:

The analysis of this Lemongrass batch sample meets the expected chemical profile for authentic essential oil of *Cymbopogon flexuosus*. No contamination or adulteration was detected. The results provided in this GCMS quality analysis reflect the chemical composition of the oil and lot referenced above on the date of analysis.

R.Time	Name	Area%
49.932	Unidentified	0.25
50.115	dleta-Cadinene	0.30
50.622	trans-gamma-Bisabolene	0.15
51.212	alpha-Cadinene	0.03
51.884	Elemol	0.03
52.364	Geranyl butyrate	0.06
52.514	Germacrene B	0.02
53.876	Caryophyllene oxide	0.31
55.490	Humulene epoxide II	0.02
		100.00