

Sample Information

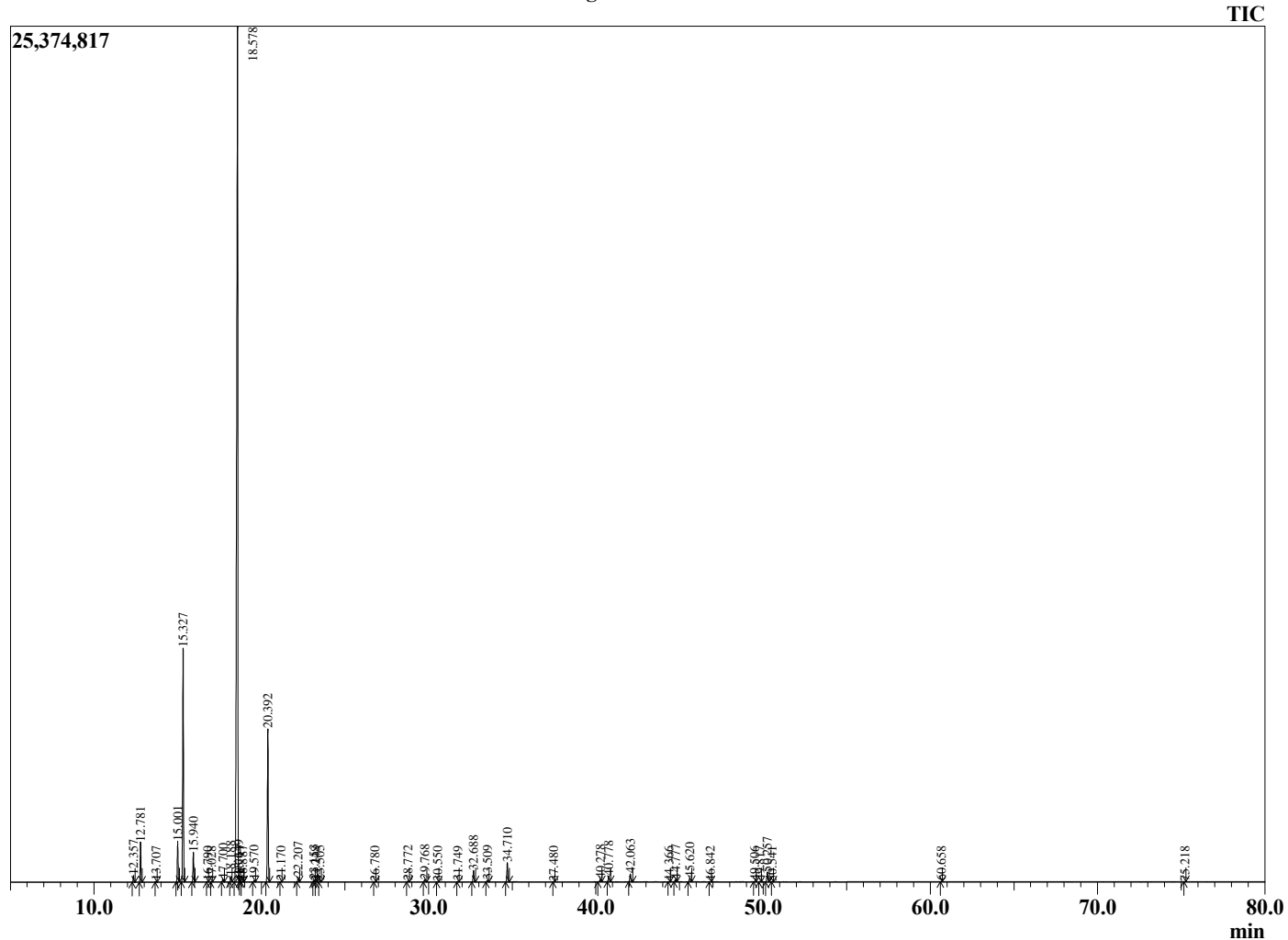
Analyzed by : Dr. Robert S. Pappas
 Analyzed : 3/8/2021 8:41:50 AM
 Sample Type : Essential Oil
 Sample Name : Lemon - Revive
 Sample ID : 0363
 Injection Volume : 0.10
 Instrument ID : GC-3



Peak Report TIC

R.Time	Name	Area%
12.357	alpha-Thujene	0.34
12.781	alpha-Pinene	1.98
13.707	Camphene	0.05
15.001	Sabinene	2.10
15.327	beta-Pinene	12.63
15.940	Myrcene	1.55
16.790	Octanal	0.04
17.028	alpha-Phellandrene	0.03
17.700	alpha-Terpinene	0.17
18.188	para-Cymene	0.34
18.578	Limonene	66.54
18.649	beta-Phellandrene	0.05
18.717	1,8-Cineole	0.01
18.887	(Z)-beta-Ocimene	0.04
19.570	(E)-beta-Ocimene	0.08
20.392	gamma-Terpinene	8.86
21.170	trans-Sabinene hydrate	0.03
22.207	Terpinolene	0.28
23.153	Linalool	0.11
23.248	cis-Sabinene hydrate	0.02
23.505	Nonanal	0.08
26.780	Citronellal	0.03
28.772	Terpinen-4-ol	0.07
29.768	alpha-Terpineol	0.16
30.550	Decanal	0.02
31.749	Nerol	0.03
32.688	Neral	0.73
33.509	Linalyl acetate	0.09
34.710	Geranial	1.22
37.480	Undecenal	0.01
40.278	Eugenol	0.18
40.778	Neryl acetate	0.38
42.063	Geranyl acetate	0.52
44.366	cis-alpha-Bergamotene	0.01
44.777	trans-beta-Caryophyllene	0.18
45.620	trans-alpha-Bergamotene	0.26
46.842	(E)-beta-Farnesene	0.02
49.506	Bicyclogermacrene	0.04
49.817	cis-alpha-Bisabolene	0.03
50.257	beta-Bisabolene	0.67
50.541	Unidentified	0.01
60.658	Unidentified	0.01
75.218	Citropten	0.01
		100.00

Chromatogram Lemon - Revive



Comments:

The analysis of this Lemon batch sample meets the expected chemical profile for authentic essential oil of *Citrus limon*. No contamination or adulteration was detected. The results provided in this GCMS quality analysis reflect the chemical composition of the oil and lot referenced above on the date of analysis.