

Sample Information

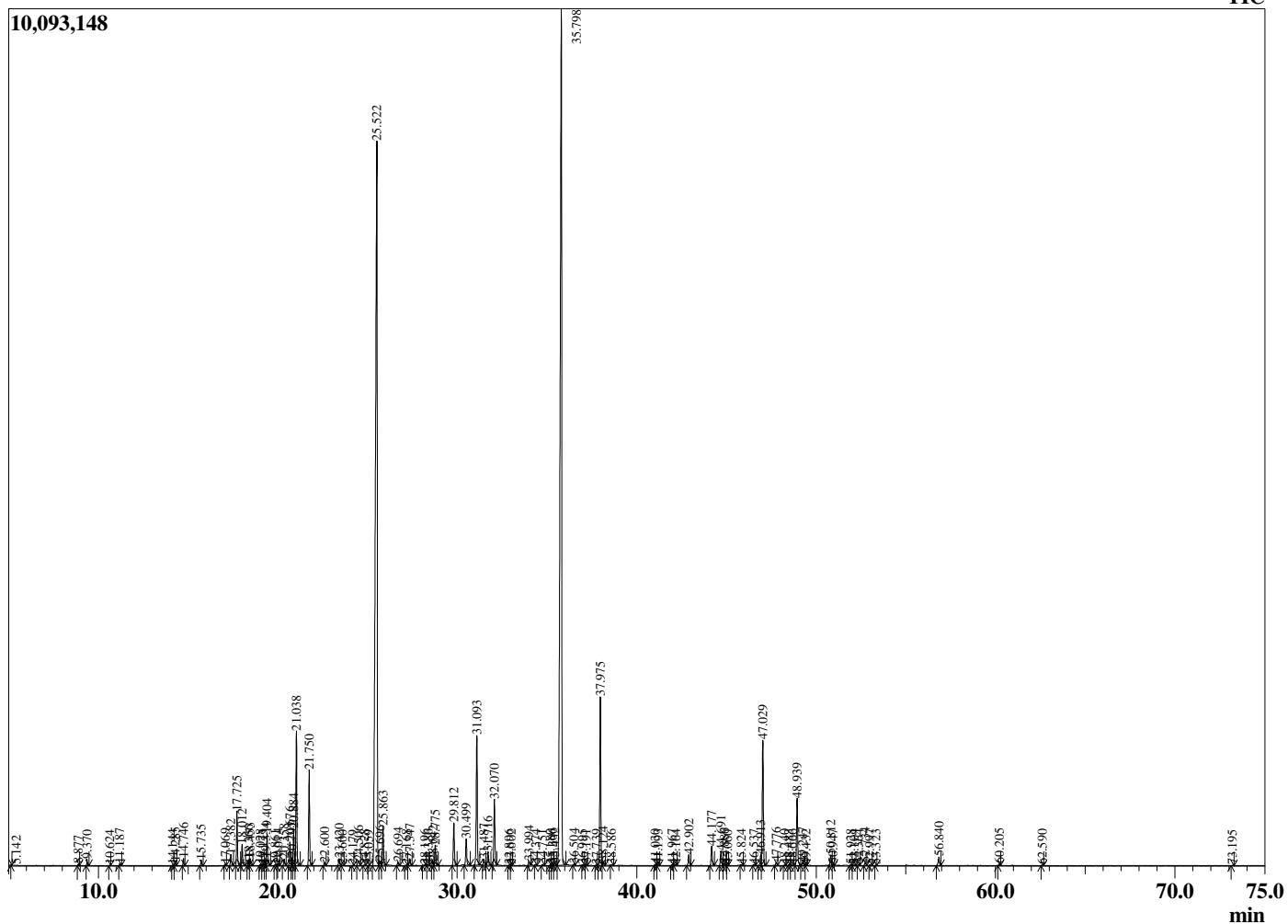
Analyzed by : Dr. Robert S. Pappas  
 Analyzed : 3/10/2021 6:30:26 AM  
 Sample Type : Essential Oil  
 Sample Name : Lavender - Revive  
 Sample ID : 0281  
 Injection Volume : 0.10  
 Instrument ID : GC-2



Peak Report TIC

R.Time	Name	Area%
5.142	3-Methylbutanal	0.00
8.877	Butyl acetate	0.03
9.370	Hexyl methyl ether	0.11
10.624	Hex-3(Z)-enol	0.01
11.187	n-Hexanol	0.04
14.144	Tricyclene	0.01
14.285	alpha-Thujene	0.07
14.746	alpha-Pinene	0.14
15.735	Camphene	0.13
17.069	Sabinene	0.03
17.382	1-Octen-3-ol	0.28
17.725	3-Octanone	1.18
18.012	Myrcene	0.49
18.366	Butyl butyrate	0.12
18.453	3-Octanol	0.17
19.028	Pseudolimonene	0.03
19.173	alpha-Phellandrene	0.02
19.334	delta-3-Carene	0.13
19.404	Hexyl acetate	0.76
19.861	alpha-Terpinene	0.02
20.014	meta-Cymene	0.04
20.358	para-Cymene	0.16
20.676	Limonene	0.54
20.797	beta-Phellandrene	0.17
20.884	1,8-cineole	0.85
21.038	(Z)-beta-Ocimene	3.09
21.750	(E)-beta-Ocimene	2.20
22.600	gamma-Terpinene	0.08
23.420	cis-Linalool oxide (furanoid)	0.18
23.600	Unidentified	0.01
24.179	Terpinolene	0.01
24.506	trans-Linalool oxide (furanoid)	0.19
24.828	Rosefuran	0.02
25.059	Unidentified	0.01
25.522	Linalool	31.98
25.696	Hexyl propionate	0.14
25.863	1-Octen-3-yl acetate	0.95
26.694	3-Octyl acetate	0.08
27.168	cis-para-Menth-2-en-1-ol	0.02
27.347	allo-Ocimene	0.16
28.196	Unidentified	0.02
28.386	Unidentified	0.01
28.642	Hexyl isobutyrate	0.11
28.775	Camphor	0.53
29.812	Lavandulol	1.08
30.499	Borneol	0.70
31.093	Terpinen-4-ol	3.44
31.487	Cryptone	0.16
31.716	Hexyl butyrate	0.37
32.070	alpha-Terpinol	1.74
32.896	Unidentified	0.02
33.002	Unidentified	0.02
33.994	Nerol	0.11
34.374	Bornyl formate	0.03
34.751	Hexyl 2-methylbutyrate	0.03
35.180	Hexyl 3-methylbutyrate	0.01
35.306	Cuminal	0.05
35.432	Unidentified	0.06
35.798	Linalyl acetate	33.99
36.504	Unidentified	0.03
36.995	Unidentified	0.01
37.191	Isopulegyl acetate	0.02

Chromatogram Lavender - Revive



Comments:

The analysis of this Lavender batch sample meets the expected chemical profile for authentic essential oil of *Lavandula angustifolia*. No contamination or adulteration was detected. The results provided in this GCMS quality analysis reflect the chemical composition of the oil and lot referenced above on the date of analysis.

R.Time	Name	Area%
37.739	Phellandral	0.01
37.975	Lavandulyl acetate	4.41
38.124	Bornyl acetate	0.10
38.586	para-Cymen-7-ol	0.02
41.030	Hexyl tiglate	0.04
41.193	Unidentified	0.02
41.967	Unidentified	0.02
42.164	Unidentified	0.02
42.902	Neryl acetate	0.30
44.177	Geranyl acetate	0.53
44.691	Hexyl hexanoate	0.41
44.886	7-epi-Sesquithujene	0.07
45.060	beta-Elemene	0.01
45.824	Sesquithujene isomer	0.03
46.537	cis-alpha-Bergamotene	0.02
46.913	alpha-Santalene	0.27
47.029	trans-beta-Caryophyllene	3.59
47.776	trans-alpha-Bergamotene	0.08
48.240	(Z)-beta-Farnesene	0.02
48.483	Unidentified	0.03
48.666	epi-beta-Santalene	0.02
48.939	(E)-beta-Farnesene	1.82
49.247	alpha-Humulene	0.10
49.432	Unidentified	0.01
50.812	Germacrene D	0.29
50.947	(Z,E)-alpha-Farnesene	0.03
51.928	Lavandulyl isovalerate	0.02
52.104	(E,E)-alpha-Farnesene	0.02
52.364	beta-Bisabolene	0.02
52.734	gamma-Cadinene	0.08
52.997	Unidentified	0.02
53.323	beta-Sesquiphellandrene	0.01
56.840	Caryophyllene oxide	0.27
60.205	tau-Cadinol	0.05
62.590	Unidentified	0.02
73.195	Unidentified	0.01
		100.00