

Sample Information

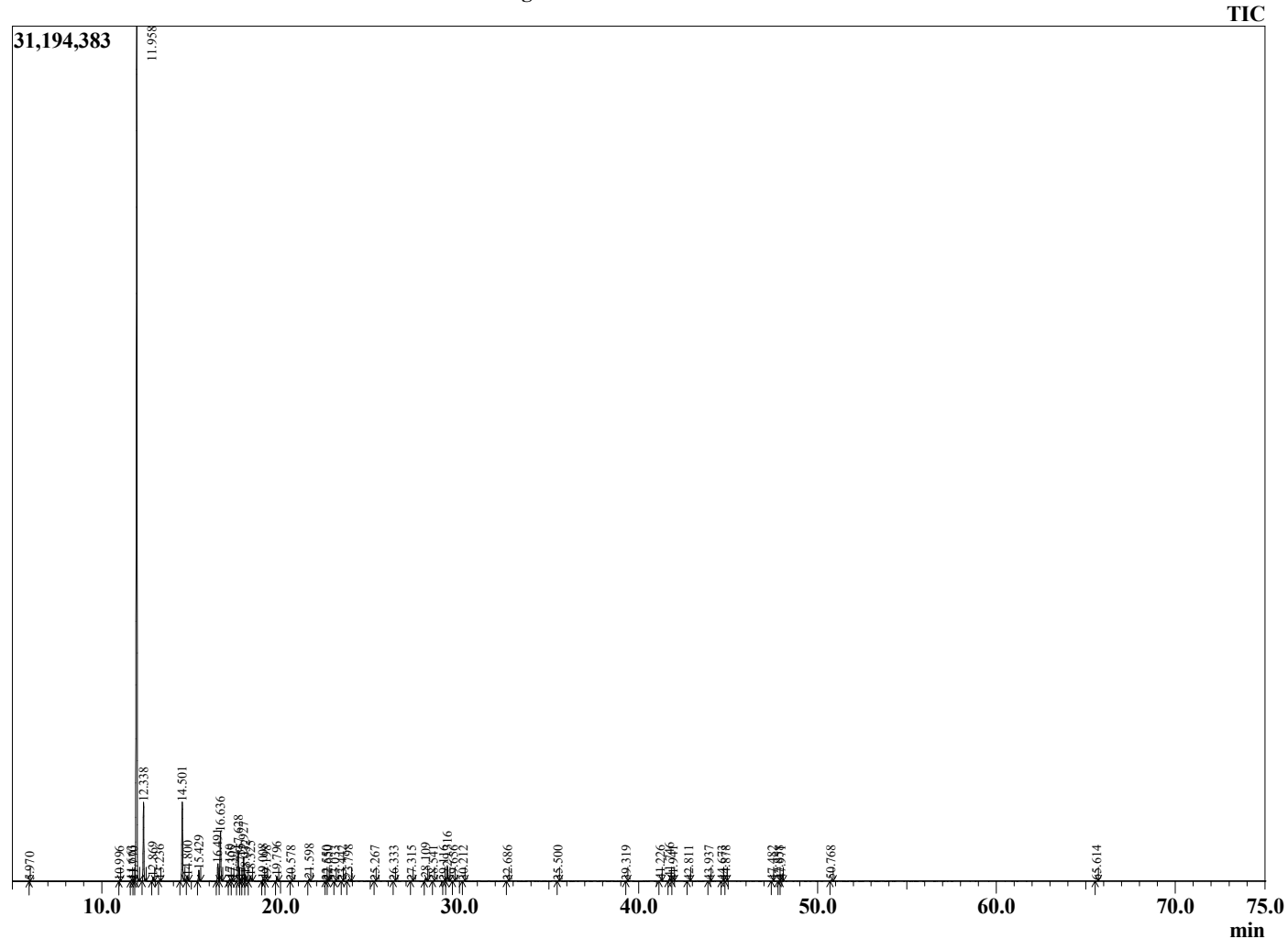
Analyzed by : Dr. Robert S. Pappas
 Analyzed : 3/5/2021 5:59:08 PM
 Sample Type : Essential Oil
 Sample Name : Frankincense-serrata - Revive
 Sample ID : 9387
 Injection Volume : 0.10
 Instrument ID : GC-4



Peak Report TIC

| R.Time | Name | Area% |
|--------|----------------------------|--------|
| 5.970 | Toluene | 0.01 |
| 10.996 | Unidentified | 0.01 |
| 11.663 | Hashishene | 0.08 |
| 11.770 | Tricylene | 0.00 |
| 11.958 | alpha-Thujene | 70.89 |
| 12.338 | alpha-Pinene | 5.72 |
| 12.869 | Thuja-2,4(10)diene | 0.29 |
| 13.236 | Camphene | 0.07 |
| 14.501 | Sabinene | 6.13 |
| 14.800 | beta-Pinene | 0.38 |
| 15.429 | Myrcene | 0.88 |
| 16.491 | alpha-Phellandrene | 1.46 |
| 16.636 | delta-3-Carene | 4.11 |
| 17.150 | alpha-Terpinene | 0.14 |
| 17.305 | ortho-Cymene | 0.07 |
| 17.628 | para-Cymene | 2.63 |
| 17.755 | Unidentified | 0.18 |
| 17.927 | Limonene | 2.13 |
| 18.032 | beta-Phellandrene | 0.55 |
| 18.325 | cis-beta-Ocimene | 0.43 |
| 19.008 | trans-beta-Ocimene | 0.17 |
| 19.198 | Unidentified | 0.04 |
| 19.796 | gamma-Terpinene | 0.40 |
| 20.578 | trans-Sabinene hydrate | 0.03 |
| 21.598 | Terpinolene | 0.17 |
| 22.550 | Linalool | 0.05 |
| 22.650 | cis-Sabinene hydrate | 0.02 |
| 23.033 | alpha-Thujone | 0.02 |
| 23.442 | Unidentified | 0.02 |
| 23.798 | beta-Thujone | 0.19 |
| 25.267 | trans-Sabinol | 0.02 |
| 26.333 | Unidentified | 0.02 |
| 27.315 | Unidentified | 0.03 |
| 28.109 | Terpinen-4-ol | 0.31 |
| 28.541 | para-Cymen-8-ol | 0.02 |
| 29.116 | alpha-Terpineol | 0.03 |
| 29.316 | Estragole | 1.39 |
| 29.656 | alpha-Phellandrene epoxide | 0.02 |
| 30.212 | Unidentified | 0.03 |
| 32.686 | Unidentified | 0.04 |
| 35.500 | Unidentified | 0.02 |
| 39.319 | alpha-Terpinyl acetate | 0.01 |
| 41.226 | alpha-Copaene | 0.08 |
| 41.746 | alpha-Cubebene | 0.31 |
| 41.941 | beta-Bourbonene | 0.02 |
| 42.811 | Unidentified | 0.07 |
| 43.937 | beta-Ylangene | 0.02 |
| 44.673 | beta-Copaene | 0.02 |
| 44.878 | trans-alpha-Bergamotene | 0.02 |
| 47.482 | trans-Cadina-1(6),4-diene | 0.02 |
| 47.858 | Germacrene D | 0.06 |
| 47.971 | gamma-Himachelene | 0.07 |
| 50.768 | Unidentified | 0.09 |
| 65.614 | alpha-Phellandrene dimer | 0.02 |
| | | 100.00 |

Chromatogram Frankincense-serrata - Revive



Comments:

The analysis of this Frankincense batch sample meets the expected chemical profile for authentic essential oil of *Boswellia serrata*. No contamination or adulteration was detected. The results provided in this GCMS quality analysis reflect the chemical composition of the oil and lot referenced above on the date of analysis.