

Sample Information

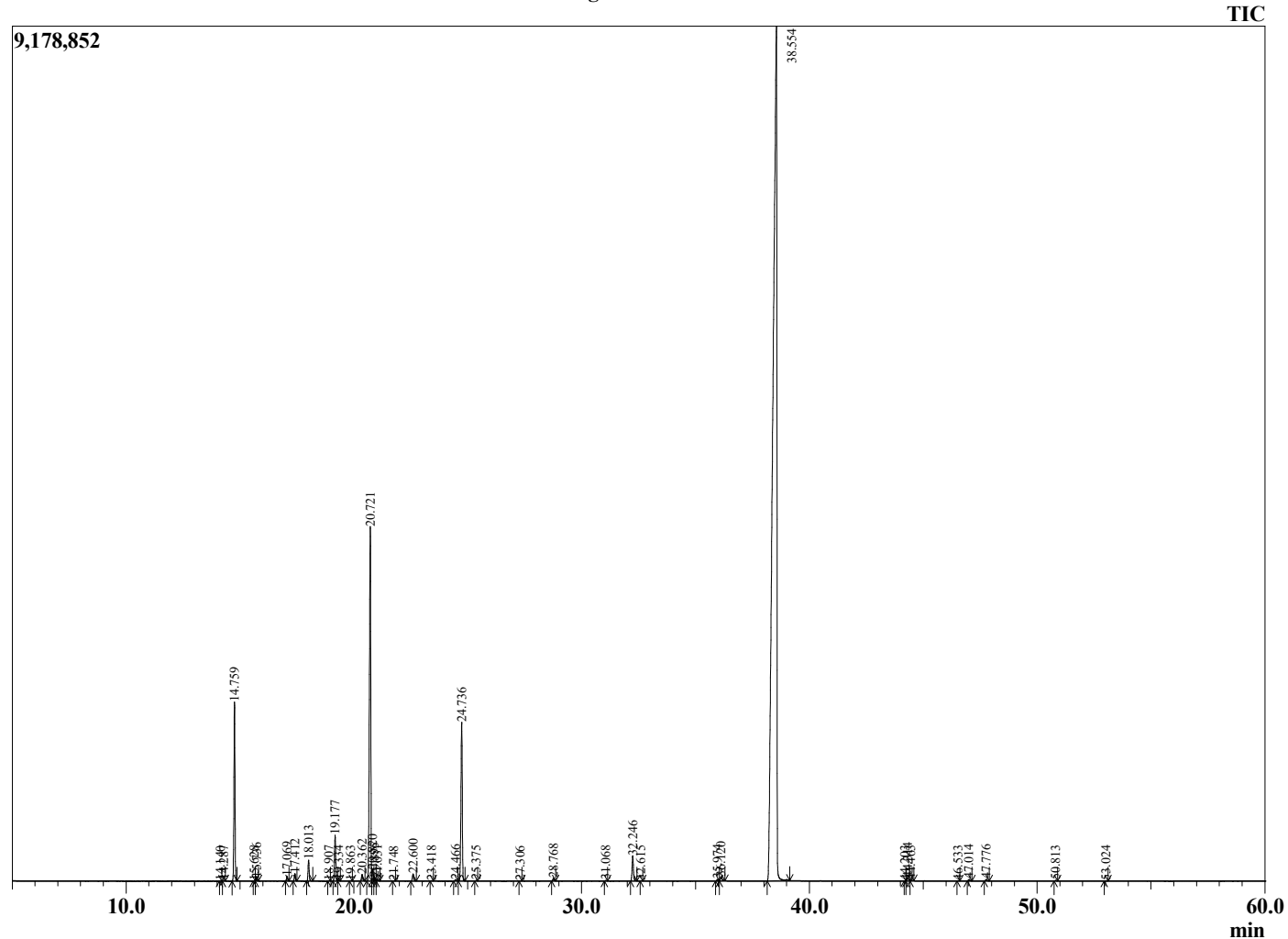
Analyzed by : Dr. Robert S. Pappas  
 Analyzed : 3/12/2021 6:56:36 PM  
 Sample Type : Essential Oil  
 Sample Name : Fennel - Revive  
 Sample ID : 1983  
 Injection Volume : 0.10  
 Instrument ID : GC-2



Peak Report TIC

R.Time	Name	Area%
14.140	Tricyclene	0.00
14.287	alpha-Thujene	0.02
14.759	alpha-Pinene	4.29
15.628	alpha-Fenchene	0.01
15.736	Camphene	0.08
17.069	Sabinene	0.11
17.412	beta-Pinene	0.19
18.013	Myrcene	0.55
18.907	Octanal	0.01
19.177	alpha-Phellandrene	1.20
19.334	delta-3-Carene	0.02
19.863	alpha-Terpinene	0.01
20.362	para-Cymene	0.18
20.721	Limonene	11.04
20.820	beta-Phellandrene	0.27
20.895	1,8-Cineole	0.09
21.031	cis-beta-Ocimene	0.04
21.748	trans-beta-Ocimene	0.00
22.600	gamma-Terpinene	0.21
23.418	trans-Sabinene hydrate	0.01
24.466	Terpinolene	0.04
24.736	Fenchone	4.73
25.375	Linalool	0.02
27.306	Unidentified	0.01
28.768	Camphor	0.09
31.068	Terpinen-4-ol	0.02
32.246	Estragole	0.76
32.615	alpha-Phellandrene epoxide	0.01
35.974	(Z)-Anethole	0.05
36.120	para-Anisaldehyde	0.14
38.554	(E)-Anethole	75.53
44.203	Unidentified	0.00
44.314	Unidentified	0.12
44.463	para-Acetonylanisole	0.04
46.533	cis-alpha-Bergamotene	0.01
47.014	beta-Caryophyllene	0.05
47.776	trans-alpha-Bergamotene	0.06
50.813	trans-Cadina-1(6),4-diene	0.01
53.024	delta-Cadinene	0.01
		100.00

Chromatogram Fennel - Revive



Comments:

The analysis of this Fennel, Sweet batch sample meets the expected chemical profile for authentic essential oil of *Foeniculum vulgare*. No contamination or adulteration was detected. The results provided in this GCMS quality analysis reflect the chemical composition of the oil and lot referenced above on the date of analysis.