

Sample Information

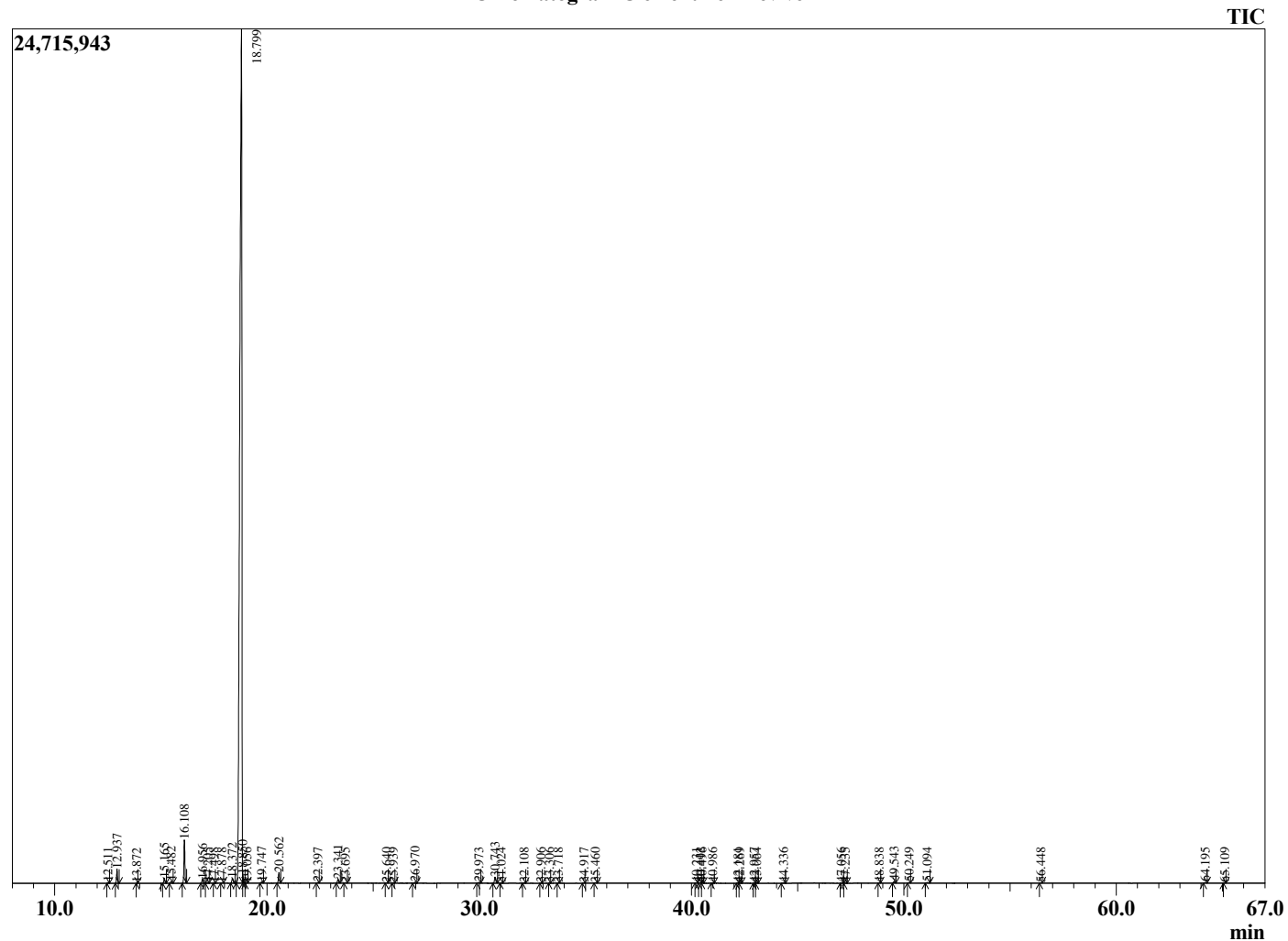
Analyzed by : Dr. Robert S. Pappas  
 Analyzed : 2/3/2021 1:18:56 AM  
 Sample Type : Essential Oil  
 Sample Name : Clementine - Revive  
 Sample ID : 0288  
 Injection Volume : 0.10  
 Instrument ID : GC-3



Peak Report TIC

R.Time	Name	Area%
12.511	alpha-Thujene	0.04
12.937	alpha-Pinene	0.72
13.872	Camphene	0.00
15.165	Sabinene	0.28
15.482	beta-Pinene	0.10
16.108	Myrcene	2.22
16.956	Octanal	0.24
17.205	alpha-Phellandrene	0.04
17.498	Hexyl acetate	0.01
17.878	alpha-Terpinene	0.02
18.372	para-Cymene	0.32
18.799	Limonene	93.69
18.850	beta-Phellandrene	0.23
19.056	(Z)-beta-Ocimene	0.01
19.747	(E)-beta-Ocimene	0.08
20.562	gamma-Terpinene	0.62
22.397	Terpinolene	0.03
23.341	Linalool	0.22
23.695	Nonanal	0.02
25.640	cis-Limonene oxide	0.01
25.939	trans-Limonene oxide	0.02
26.970	Citronellal	0.07
29.973	alpha-Terpineol	0.05
30.743	Decanal	0.39
31.024	Octyl acetate	0.01
32.108	Citronellol	0.02
32.906	Neral	0.01
33.306	Carvone	0.01
33.718	Unidentified	0.01
34.917	Geranial	0.01
35.460	Perillaldehyde	0.02
40.231	Unidentified	0.01
40.412	Citronellyl acetate	0.02
40.496	Eugenol	0.01
40.986	Neryl acetate	0.02
42.181	alpha-Copaene	0.04
42.269	Unidentified	0.02
42.957	beta-Cubebene	0.02
43.064	beta-Elemene	0.02
44.336	Dodecanal	0.04
47.056	(E)-beta-Farnesene	0.02
47.235	alpha-Humulene	0.01
48.838	Germacrene D	0.01
49.543	Valencene	0.11
50.249	(E,E)-alpha-Farnesene	0.04
51.094	delta-Cadinene	0.05
56.448	Unidentified	0.01
64.195	alpha-Sinensal	0.04
65.109	Unidentified	0.01
		100.00

Chromatogram Clementine - Revive



Comments:

The analysis of this Clementine batch sample meets the expected chemical profile for authentic essential oil of *Citrus clementina*. No contamination or adulteration was detected. The results provided in this GCMS quality analysis reflect the chemical composition of the oil and lot referenced above on the date of analysis.