

Sample Information

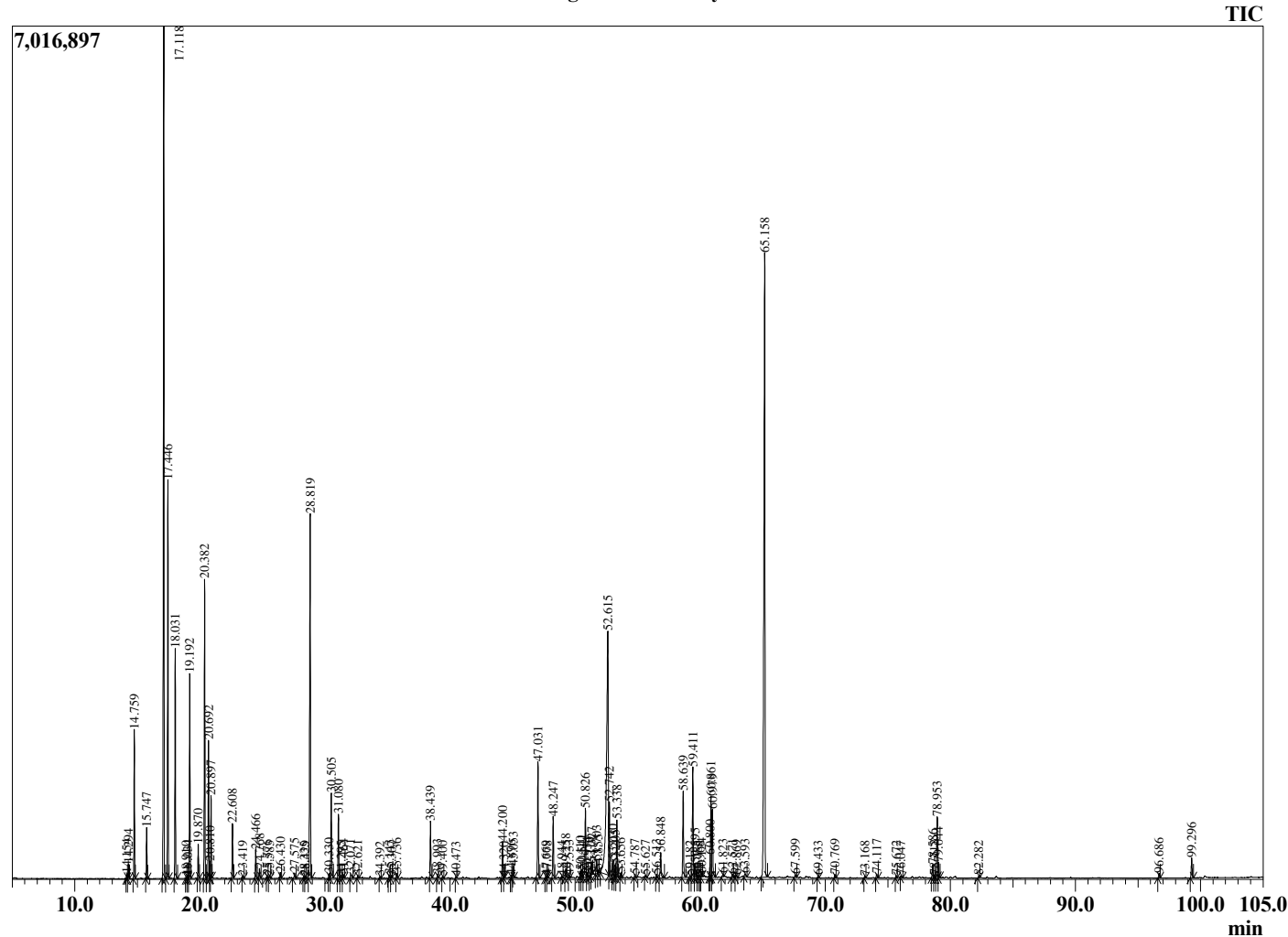
Analyzed by : Dr. Robert S. Pappas
 Analyzed : 3/6/2021 5:14:21 AM
 Sample Type : Essential Oil
 Sample Name : Blue Tansy - Revive
 Sample ID : 0293
 Injection Volume : 0.10
 Instrument ID : GC-2



Peak Report TIC

R.Time	Name	Area%
14.154	Tricyclene	0.06
14.294	alpha-Thujene	0.20
14.759	alpha-Pinene	2.01
15.747	Camphene	0.72
17.118	Sabinene	13.97
17.446	beta-Pinene	5.79
18.031	Myrcene	3.39
18.910	Octanal	0.03
19.034	Pseudolimonene	0.06
19.192	alpha-Phellandrene	3.07
19.870	alpha-Terpinene	0.51
20.382	para-Cymene	4.64
20.692	Limonene	2.13
20.810	beta-Phellandrene	0.23
20.897	1,8-Cineole	1.26
22.608	gamma-Terpinene	0.87
23.419	trans-Sabinene hydrate	0.04
24.466	Terpinolene	0.46
24.768	6,7-Epoxymyrcene	0.17
25.376	Linalool	0.04
25.583	2-Methylbutyl-2-methylbutyrate	0.05
26.430	Unidentified	0.10
27.575	4-Acetyl-1-methylcyclohexene	0.11
28.335	trans-Pinocarveol	0.04
28.429	trans-para-Menth-2-en-1-ol	0.03
28.819	Camphor	6.86
30.330	Unidentified	0.08
30.505	Borneol	1.54
31.080	Terpinen-4-ol	1.09
31.295	Unidentified	0.06
31.464	para-Cymen-8-ol	0.07
32.071	alpha-Terpineol	0.13
32.621	alpha-Phellandrene epoxide	0.05
34.392	(Z)-3-Hexenyl isovalerate	0.03
35.143	Unidentified	0.06
35.307	Cuminal	0.03
35.736	Unidentified	0.09
38.439	Thymol	0.99
38.993	Carvacrol	0.07
39.400	Unidentified	0.04
40.473	Unidentified	0.02
44.200	alpha-Copaene	0.67
44.320	Unidentified	0.02
44.896	Sesquithujene isomer	0.06
45.053	beta-Elementene	0.24
47.031	trans-beta-Caryophyllene	2.21
47.669	Unidentified	0.05
47.778	trans-alpha-Bergamotene	0.05
48.247	(Z)-beta-Farnesene	1.15
48.944	(E)-beta-Farnesene	0.03
49.258	alpha-Humulene	0.17
49.533	Alloaromadendrene	0.04
50.410	trans-Cadina-1(6),4-diene	0.10
50.541	gamma-Curcumene	0.14
50.826	Germacrene D	1.41
50.954	(Z,E)-alpha-Farnesene	0.10
51.219	Unidentified	0.05
51.327	beta-Selinene	0.24
51.703	Bicyclogermacrene	0.26
51.855	alpha-Murolene	0.05
52.615	3,6-Dihydrochamazulene	10.55
52.742	Dihydrochamazulene isomer	1.25

Chromatogram Blue Tansy - Revive



Comments:

The analysis of this Blue Tansy batch sample meets the expected chemical profile for authentic essential oil of *Tanacetum annuum*. No contamination or adulteration was detected. The results provided in this GCMS quality analysis reflect the chemical composition of the oil and lot referenced above on the date of analysis.

R.Time	Name	Area%
53.030	delta-Cadinene	0.32
53.205	Dihydrochamazulene isomer	0.27
53.338	beta-Sesquiphellandrene	1.09
53.656	Dihydrochamazulene isomer	0.08
54.787	alpha-Elemol	0.07
55.627	Unidentified	0.04
56.513	Spathulenol	0.08
56.848	Caryophyllene oxide	0.58
58.639	5,6-Dihydrochamazulene	1.70
59.182	Unidentified	0.05
59.411	Dehydrotetrahydrochamazulene isomer	2.17
59.595	Guaiol	0.31
59.785	Unidentified	0.04
59.968	Unidentified	0.03
60.124	Hinesol	0.06
60.800	Unidentified	0.22
60.861	Dehydrotetrahydrochamazulene isomer	1.59
60.979	alpha-Eudesmol	1.37
61.823	beta-Bisabolol	0.07
62.571	Unidentified	0.08
62.869	Unidentified	0.06
63.593	Unidentified	0.10
65.158	Chamazulene	16.79
67.599	Unidentified	0.07
69.433	Unidentified	0.04
70.769	Phytone	0.07
73.168	Unidentified	0.03
74.117	Unidentified	0.09
75.672	Unidentified	0.05
76.047	Myrcene dimer I	0.03
78.586	Unidentified	0.27
78.712	Unidentified	0.06
78.953	9-(15,16-Dihydro-15-methylenegeranyl)-alph:	1.29
79.044	9-(15,16-Dihydro-15-methylenegeranyl)-p-cy:	0.24
82.282	Unidentified	0.05
96.686	Unidentified	0.09
99.296	Unidentified	0.42
		100.00