

Sample Information

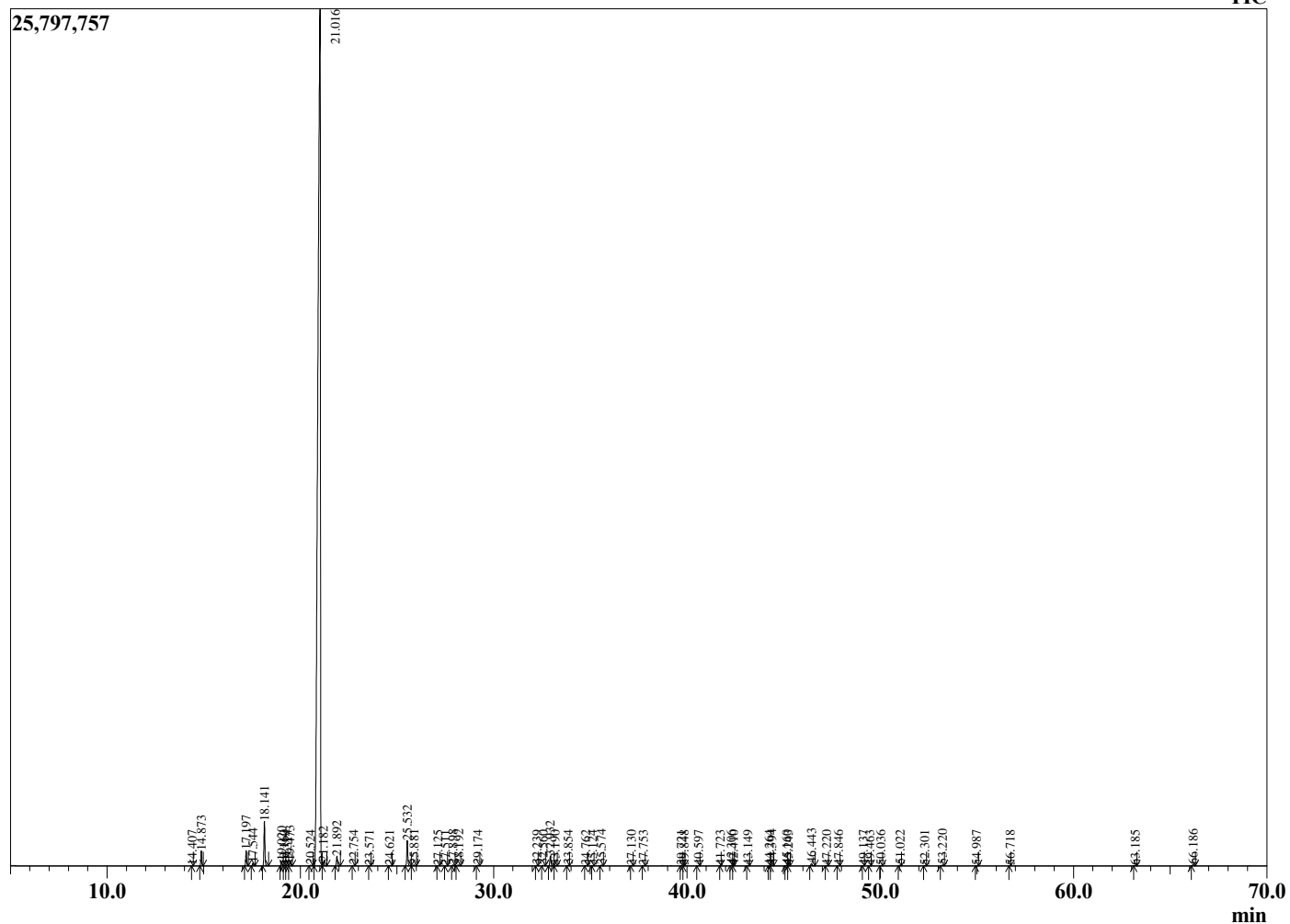
Analyzed by : Dr. Robert S. Pappas  
 Analyzed : 12/16/2020 11:38:20 PM  
 Sample Type : Essential Oil  
 Sample Name : Nova mandarin - Revive  
 Sample ID : 0346  
 Injection Volume : 0.10  
 Instrument ID: : GC-3



Peak Report TIC

R.Time	Name	Area%
14.407	alpha-Thujene	0.01
14.873	alpha-Pinene	0.59
17.197	Sabinene	0.64
17.544	beta-Pinene	0.11
18.141	Myrcene	1.88
19.020	Octanal	0.21
19.160	Pseudolimonene	0.02
19.314	alpha-Phellandrene	0.03
19.473	delta-3-Carene	0.22
20.524	para-Cymene	0.04
21.016	Limonene	92.90
21.182	(Z)-beta-Ocimene	0.19
21.892	(E)-beta-Ocimene	0.44
22.754	gamma-Terpinene	0.03
23.571	trans-Sabinene hydrate	0.01
24.621	Terpinolene	0.02
25.532	Linalool	1.19
25.881	Nonanal	0.05
27.125	trans-para-Mentha-2,8-dien-1-ol	0.02
27.511	allo-Ocimene	0.01
27.898	cis-Limonene oxide	0.05
28.192	trans-Limonene oxide	0.06
29.174	Citronellal	0.04
32.239	alpha-Terpineol	0.03
32.560	Unidentified	0.03
32.932	Decanal	0.50
33.190	Octyl acetate	0.01
33.854	trans-Carveol	0.02
34.762	Unidentified	0.01
35.124	Neral	0.01
35.574	Carvone	0.04
37.130	Geranial	0.02
37.753	Perillaldehyde	0.01
39.721	Unidentified	0.01
39.848	Undecenal	0.00
40.597	Unidentified	0.01
41.723	delta-Elementene	0.00
42.306	para-Menth-8-en-1,2-diol	0.03
42.410	alpha-Terpinyl acetate	0.01
43.149	Unidentified	0.01
44.264	Unidentified	0.01
44.394	alpha-Copaene	0.05
45.160	beta-Cubebene	0.03
45.243	beta-Elementene	0.02
46.443	Dodecanal	0.13
47.220	trans-beta-Caryophyllene	0.01
47.846	beta-Copaene	0.02
49.137	Unidentified	0.01
49.463	alpha-Humulene	0.01
50.036	Dodec-2(E)-enal	0.01
51.022	Germacrene D	0.03
52.301	(E,E)-alpha-Farnesene	0.01
53.220	delta-Cadinene	0.04
54.987	alpha-Elemol	0.02
56.718	Spathulenol	0.01
63.185	beta-Sinensal	0.02
66.186	alpha-Sinensal	0.06
		100.00

Chromatogram Nova mandarin - Revive



Comments:

The analysis of this Nova Mandarin batch sample meets the expected chemical profile for authentic essential oil of *Citrus reticulata blanco*. No contamination or adulteration was detected.

The results provided in this GCMS quality analysis reflect the chemical composition of the oil and lot referenced above on the date of analysis.