

Sample Information

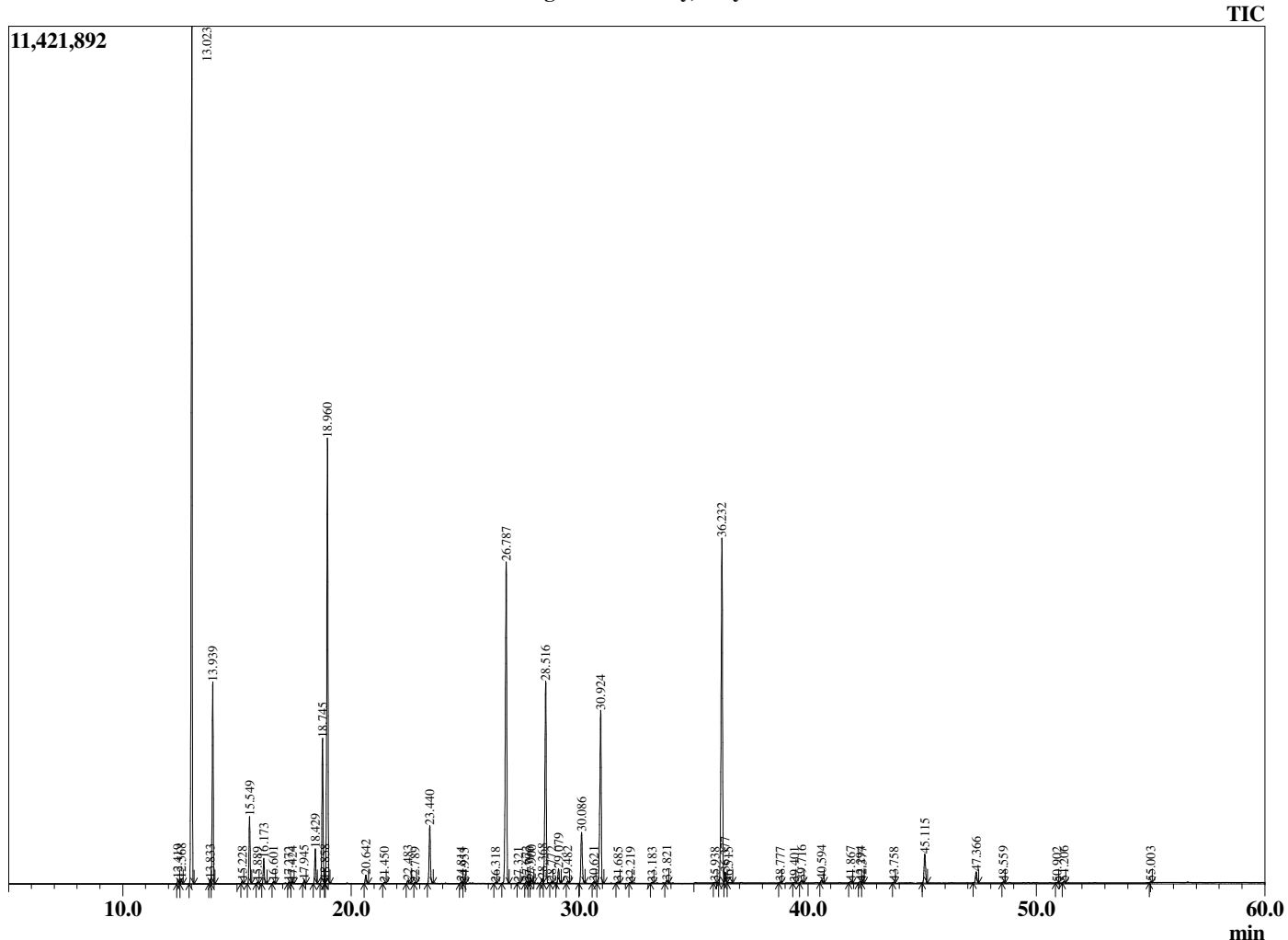
Analyzed by : Dr. Robert S. Pappas
 Analyzed : 8/6/2020 3:58:21 PM
 Sample Type : Essential Oil
 Sample Name : Rosemary, Italy - Revive
 Sample ID : 2304
 Injection Volume : 0.10
 Instrument ID : GC-3



Peak Report TIC

R.Time	Name	Area%
12.419	Tricyclene	0.12
12.568	alpha-Thujene	0.13
13.023	alpha-Pinene	24.16
13.833	alpha-Fenchene	0.13
13.939	Camphene	5.49
15.228	Sabinene	0.07
15.549	beta-Pinene	1.92
15.889	3-Octanone	0.04
16.173	Myrcene	0.74
16.601	3-Octanol	0.06
17.272	alpha-Phellandrene	0.04
17.424	delta-3-Carene	0.06
17.945	alpha-Terpinene	0.11
18.429	para-Cymene	1.07
18.745	Limonene	4.57
18.858	beta-Phellandrene	0.07
18.960	1,8-cineole	14.03
20.642	gamma-Terpinene	0.27
21.450	trans-Sabinene hydrate	0.04
22.483	Terpinolene	0.12
22.789	para-Cymenene	0.03
23.440	Linalool	1.99
24.814	alpha-Fenchol	0.05
24.953	Chrysanthenone	0.02
26.318	trans-Pinocarveol	0.03
26.787	Camphor	11.80
27.321	trans-beta-Terpineol	0.03
27.673	Pinocamphone	0.07
27.796	Pinocarvone	0.03
27.900	Isoborneol	0.12
28.368	delta-Terpineol	0.17
28.516	Borneol	7.40
28.772	Isopinocamphone	0.04
29.079	Terpinen-4-ol	0.51
29.482	para-Cymen-8-ol	0.07
30.086	alpha-Terpineol	1.92
30.621	Unidentified	0.06
30.924	Verbenone	6.52
31.685	Unidentified	0.06
32.219	Citronellol	0.02
33.183	Unidentified	0.04
33.821	Geraniol	0.10
35.938	Unidentified	0.03
36.232	Bornyl acetate	13.08
36.377	Isobornyl acetate	0.37
36.515	Unidentified	0.04
38.777	Myrtenyl acetate	0.03
39.401	Unidentified	0.03
39.716	Unidentified	0.10
40.594	Eugenol	0.09
41.867	alpha-Ylangene	0.07
42.294	alpha-Copaene	0.07
42.377	Geranyl acetate	0.03
43.758	Methyleugenol	0.03
45.115	beta-Caryophyllene	1.14
47.366	alpha-Humulene	0.43
48.559	trans-Cadina-1(6),4-diene	0.04
50.902	gamma-Cadinene	0.03
51.206	delta-Cadinene	0.06
55.003	Caryophyllene oxide	0.04
		100.00

Chromatogram Rosemary, Italy - Revive



Comments:

The analysis of this Rosemary, Italy batch sample meets the expected chemical profile for authentic essential oil of *Rosmarinus officinalis*. No contamination or adulteration was detected. The results provided in this GCMS quality analysis reflect the chemical composition of the oil and lot referenced above on the date of analysis.