

Sample Information

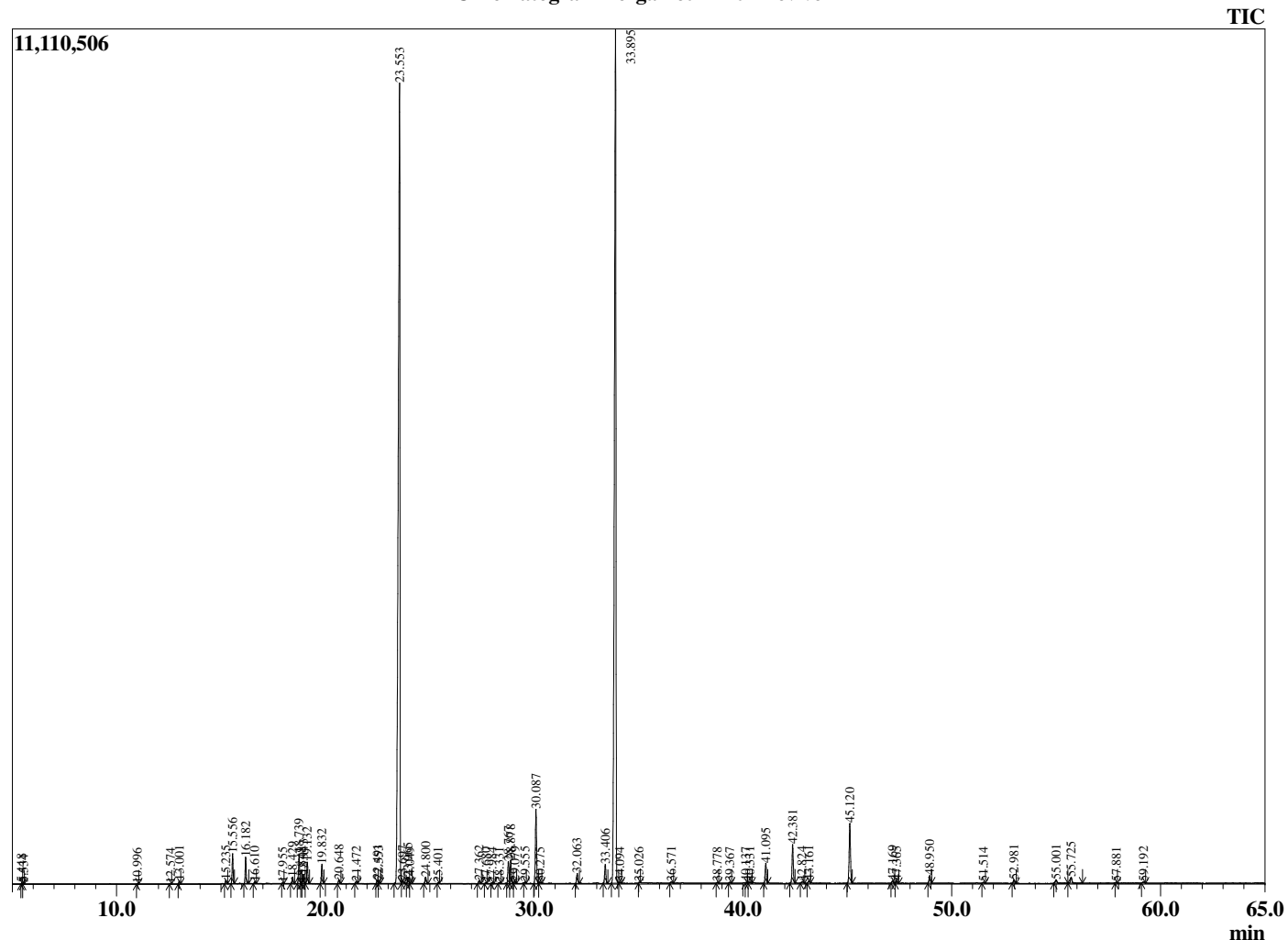
Analyzed by : Dr. Robert S. Pappas
 Analyzed : 8/6/2020 7:27:44 AM
 Sample Type : Essential Oil
 Sample Name : Bergamot Mint - Revive
 Sample ID : 6842
 Injection Volume : 0.10
 Instrument ID : GC-3



Peak Report TIC

R.Time	Name	Area%
5.448	Isoamyl alcohol	0.02
5.534	2-Methyl butanol	0.01
10.996	2,5-Diethyltetrahydrofuran	0.02
12.574	alpha-Thujene	0.02
13.001	alpha-Pinene	0.09
15.235	Sabinene	0.10
15.556	beta-Pinene	0.89
16.182	Myrcene	0.82
16.610	3-Octanol	0.06
17.955	alpha-Terpinene	0.02
18.429	para-Cymene	0.22
18.739	Limonene	0.93
18.848	beta-Phellandrene	0.02
18.943	1,8-cineole	0.30
19.132	cis-beta-Ocimene	0.70
19.832	trans-beta-Ocimene	0.63
20.648	gamma-Terpinene	0.14
21.472	cis-Linalool oxide (furanoid)	0.07
22.491	Terpinolene	0.13
22.553	trans-Linalool oxide (furanoid)	0.09
23.553	Linalool	41.58
23.697	2-Methylbutyl-2-methylbutyrate	0.09
23.965	1-Octen-3-yl acetate	0.21
24.049	2-Methylbutyl isovalerate	0.02
24.800	3-Octyl acetate	0.24
25.401	allo-Ocimene	0.03
27.362	Menthone	0.10
27.680	Pinocamphone	0.03
27.984	Isomenthone	0.03
28.331	Neomenthol	0.03
28.767	Isopinocamphone	0.81
28.878	Menthol	0.86
29.079	Terpinen-4-ol	0.08
29.555	Hex-(3Z)-enyl butyrate	0.04
30.087	alpha-Terpineol	2.74
30.275	Unidentified	0.05
32.063	Nerol	0.37
33.406	Carvone	0.71
33.895	Linalyl acetate	40.39
34.094	Unidentified	0.04
35.026	Geranial	0.02
36.571	Menthyl acetate	0.06
38.778	Myrtenyl acetate	0.03
39.367	Unidentified	0.03
40.137	Unidentified	0.02
40.331	Unidentified	0.05
41.095	Neryl acetate	0.76
42.381	Geranyl acetate	1.46
42.824	beta-Bourbonene	0.08
43.161	beta-Elemene	0.11
45.120	beta-Caryophyllene	2.41
47.169	trans-beta-Farnesene	0.10
47.365	alpha-Humulene	0.09
48.950	Germacrene D	0.32
51.514	Unidentified	0.04
52.981	Elemol	0.14
55.001	Caryophyllene oxide	0.19
55.725	Viridiflorol	0.28
57.881	gamma-Eudesmol	0.03
59.192	alpha-Eudesmol	0.06
		100.00

Chromatogram Bergamot Mint - Revive



Comments:

The analysis of this Bergamot Mint batch sample meets the expected chemical profile for authentic essential oil of *Mentha citrata*. No contamination or adulteration was detected. The results provided in this GCMS quality analysis reflect the chemical composition of the oil and lot referenced above on the date of analysis.