

Sample Information

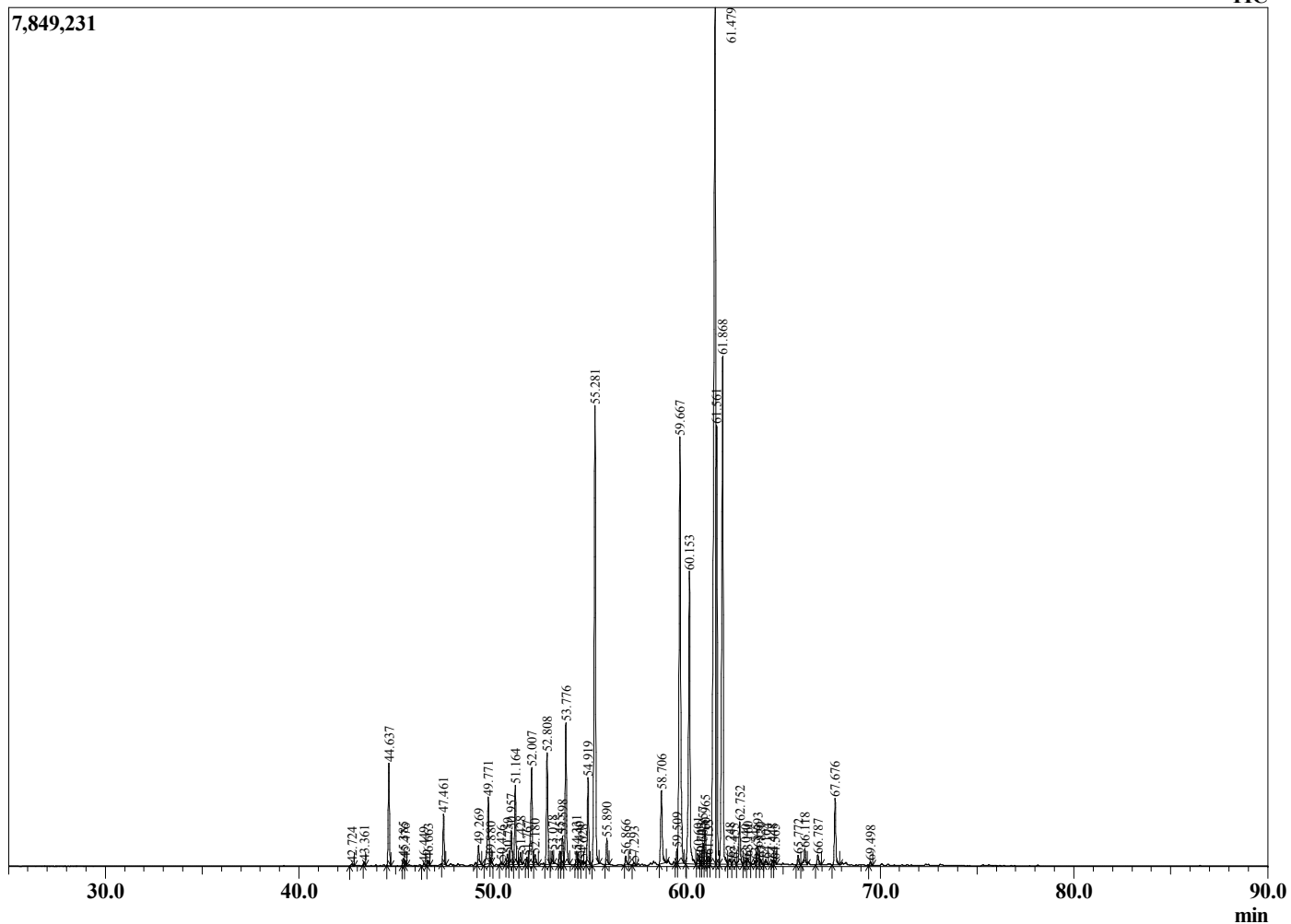
Analyzed by : Dr. Robert S. Pappas  
 Analyzed : 6/20/2020 11:01:09 AM  
 Sample Type : Essential Oil  
 Sample Name : Amyris - Revive  
 Sample ID : 8358  
 Injection Volume : 0.10  
 Instrument ID : GC-2



Peak Report TIC

R.Time	Name	Area%
42.724	alpha-Cubebene	0.04
43.361	Unidentified	0.06
44.637	alpha-Copaene	1.85
45.385	Unidentified	0.13
45.476	beta-Elementene	0.09
46.449	Unidentified	0.05
46.663	alpha-Gurjunene	0.09
47.461	trans-beta-Caryophyllene	0.88
49.269	alpha-Acoradiene	0.39
49.771	Unidentified	1.56
49.880	Unidentified	0.06
50.426	Unidentified	0.07
50.759	beta-Chamigrene	0.18
50.957	gamma-Curcumene	0.75
51.164	Ar-Curcumene	1.48
51.428	Unidentified	0.22
51.767	beta-Selinene	0.12
52.007	alpha-Zingiberene	2.39
52.180	alpha-Selinene	0.25
52.808	Unidentified	2.26
53.078	dihydro-beta-Agarofuran	0.24
53.455	delta-Cadinene	0.25
53.598	alpha-Panasinsene	0.55
53.776	beta-Sesquiphellandrene	2.82
54.331	3,9-Guaiadiene	0.23
54.440	Unidentified	0.13
54.628	Selina-4(15),7(11)-diene	0.07
54.919	Selina-3,7(11)-diene	1.66
55.281	Elemol	10.23
55.890	trans-Nerolidol	0.48
56.866	Eudesmol isomer	0.19
57.293	Caryophyllene oxide	0.05
58.706	5-epi-7-epi-alpha-Eudesmol	1.79
59.509	Unidentified	0.24
59.667	10-epi-gamma-Eudesmol	10.18
60.153	gamma-Eudesmol	6.84
60.601	Hinesol	0.25
60.745	Unidentified	0.07
60.857	Unidentified	0.42
60.965	Unidentified	0.73
61.133	Unidentified	0.20
61.479	Valerianol	26.10
61.561	alpha-Eudesmol	7.13
61.868	7-epi-alpha-Eudemsol	11.57
62.248	Unidentified	0.17
62.455	Unidentified	0.14
62.752	Unidentified	0.92
63.040	Unidentified	0.10
63.160	Unidentified	0.15
63.545	Unidentified	0.08
63.693	Unidentified	0.37
63.820	Unidentified	0.11
64.104	Unidentified	0.09
64.448	Unidentified	0.09
64.565	Unidentified	0.08
65.772	Unidentified	0.20
66.118	Unidentified	0.42
66.787	Unidentified	0.23
67.676	Drimenol	1.41
69.498	Unidentified	0.06
		100.00

Chromatogram Amyris - Revive



Comments:

The analysis of this Amyris batch sample meets the expected chemical profile for authentic essential oil of *Amyris balsamifera*. No contamination or adulteration was detected. The results provided in this GCMS quality analysis reflect the chemical composition of the oil and lot referenced above on the date of analysis.