

Sample Information

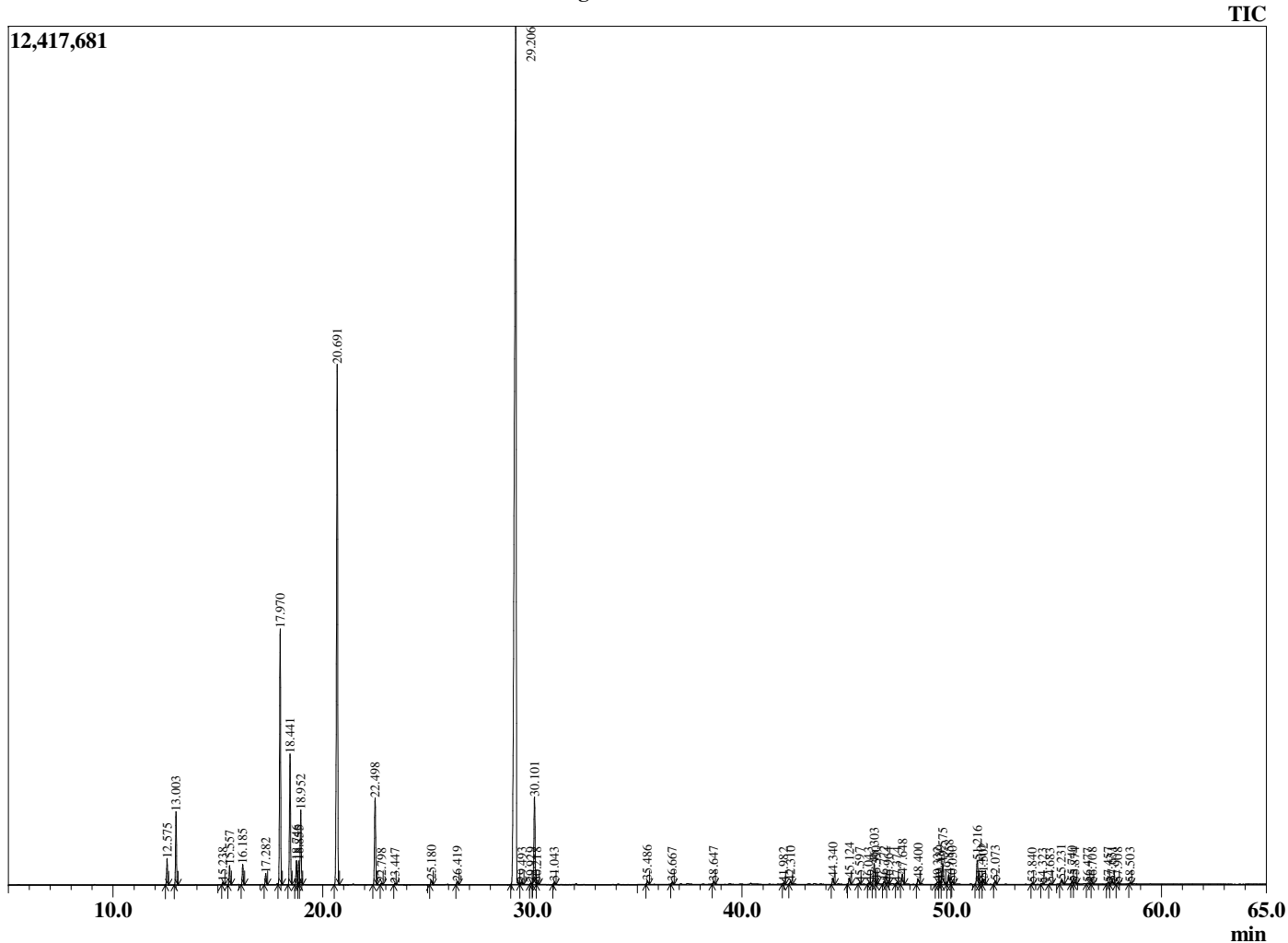
Analyzed by : Dr. Robert S. Pappas
 Analyzed : 6/12/2020 1:51:15 AM
 Sample Type : Essential Oil
 Sample Name : Tea Tree - Revive
 Sample ID : 8386
 Injection Volume : 0.10
 Instrument ID: : GC-3



Peak Report TIC

R.Time	Name	Area%
12.575	alpha-Thujene	0.72
13.003	alpha-Pinene	2.03
15.238	Sabinene	0.08
15.557	beta-Pinene	0.58
16.185	Myrcene	0.60
17.282	alpha-Phellandrene	0.35
17.970	alpha-Terpinene	8.02
18.441	para-Cymene	4.15
18.746	Limonene	0.79
18.855	beta-Phellandrene	0.76
18.952	1,8-cineole	2.43
20.691	gamma-Terpinene	18.38
22.498	Terpinolene	2.96
22.798	para-Cymenene	0.05
23.447	Linalool	0.04
25.180	cis-para-Menth-2-en-1-ol	0.16
26.419	trans-para-Menth-2-en-1-ol	0.12
29.206	Terpinen-4-ol	47.32
29.493	para-Cymen-8-ol	0.09
29.929	Unidentified	0.05
30.101	alpha-Terpineol	3.26
30.218	cis-Piperitol	0.05
31.043	Unidentified	0.09
35.486	cis-Ascaridole glycol	0.13
36.667	Unidentified	0.09
38.647	Unidentified	0.11
41.982	Unidentified	0.05
42.310	alpha-Copaene	0.12
44.340	alpha-Gurjunene	0.25
45.124	beta-Caryophyllene	0.26
45.597	Unidentified	0.05
46.043	Unidentified	0.05
46.303	Aromadendrene	0.89
46.390	Unidentified	0.09
46.772	alpha-Guaiene	0.12
46.964	trans-Murrola-3,5-diene	0.06
47.374	alpha-Humulene	0.04
47.648	Alloaromadendrene	0.42
48.400	10-beta-H-Cadina-1(6),4-diene	0.25
49.332	delta-Selinene	0.12
49.439	beta-Selinene	0.16
49.575	Viridiflorene (Ledene)	0.89
49.858	Bicyclogermacrene	0.43
50.030	alpha-Murolene	0.12
51.216	delta-Cadinene	0.95
51.410	trans-Calamenene	0.11
51.502	Zonarene	0.21
52.073	trans-Cadine-1,4-diene	0.13
53.840	Unidentified	0.04
54.323	Unidentified	0.04
54.683	Spathulenol	0.05
55.231	Globulol	0.19
55.740	Viridiflorol	0.09
55.874	Guaiol	0.07
56.477	5-epi-7-epi-alpha-Eudesmol	0.03
56.708	Unidentified	0.04
57.457	Unidentified	0.07
57.651	1-epi-Cubenol	0.11
57.908	Unidentified	0.05
58.503	Unidentified	0.04
		100.00

Chromatogram Tea Tree - Revive



Comments:

The analysis of this Tea Tree batch sample meets the expected chemical profile for authentic essential oil of *Melaleuca alternifolia*. No contamination or adulteration was detected. The results provided in this GCMS quality analysis reflect the chemical composition of the oil and lot referenced above on the date of analysis.