

Sample Information

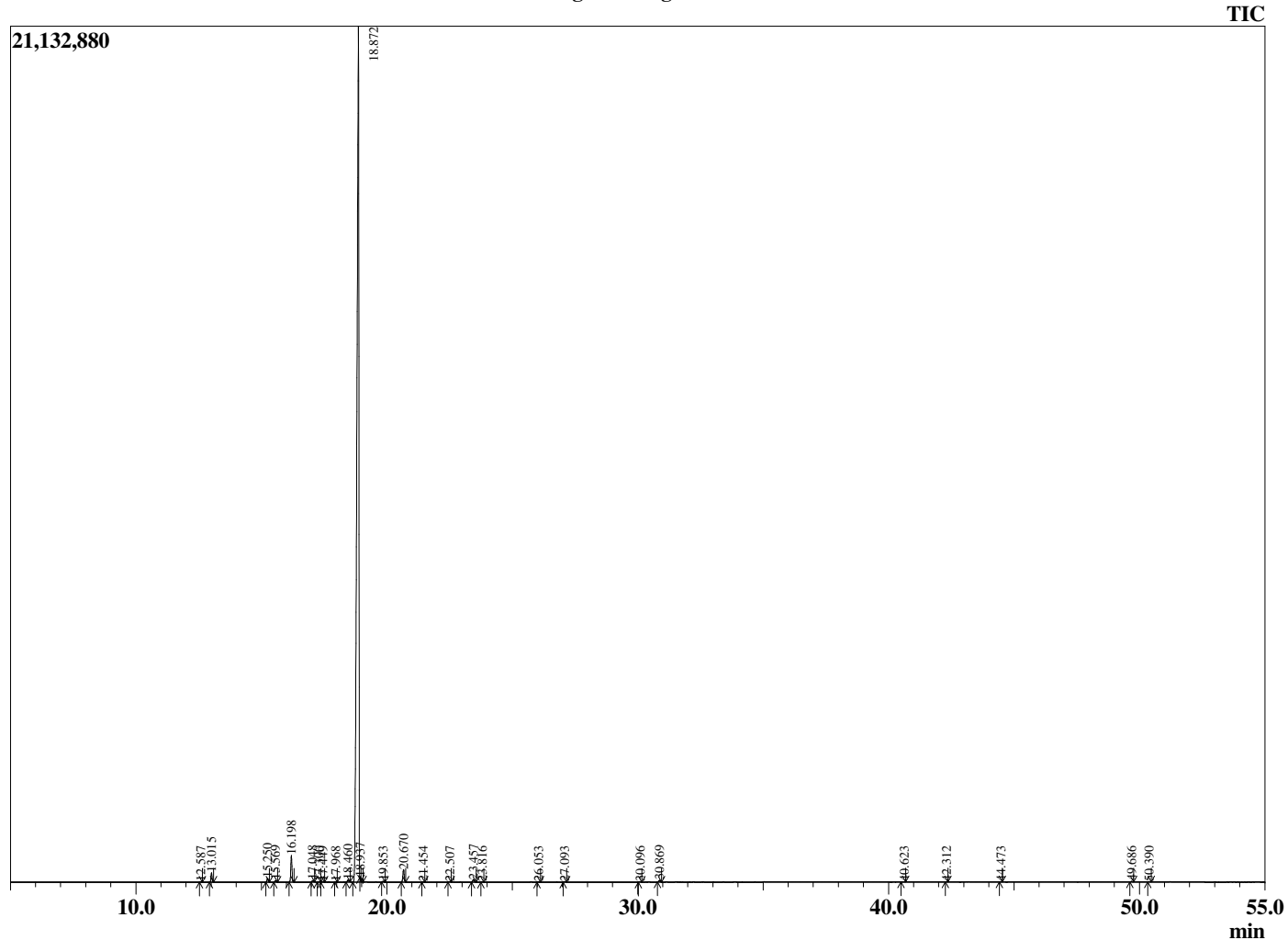
Analyzed by : Dr. Robert S. Pappas
 Analyzed : 6/20/2020 10:47:50 AM
 Sample Type : Essential Oil
 Sample Name : Tangerine - Revive
 Sample ID : 9758
 Injection Volume : 0.10
 Instrument ID : GC-3



Peak Report TIC

R.Time	Name	Area%
12.587	alpha-Thujene	0.05
13.015	alpha-Pinene	0.58
15.250	Sabinene	0.24
15.569	beta-Pinene	0.10
16.198	Myrcene	1.74
17.048	Octanal	0.10
17.300	alpha-Phellandrene	0.03
17.449	delta-3-Carene	0.03
17.968	alpha-Terpinene	0.02
18.460	para-Cymene	0.17
18.872	Limonene	95.27
18.937	beta-Phellandrene	0.03
19.853	trans-beta-Ocimene	0.05
20.670	gamma-Terpinene	0.93
21.454	Octanol	0.02
22.507	Terpinolene	0.05
23.457	Linalool	0.20
23.816	Nonanal	0.02
26.053	cis-Limonene oxide	0.02
27.093	Citronellal	0.04
30.096	alpha-Terpineol	0.04
30.869	Decanal	0.13
40.623	Eugenol	0.02
42.312	alpha-Copaene	0.01
44.473	Dodecanal	0.02
49.686	Valencene	0.05
50.390	(E,E)-alpha-Farnesene	0.03
		100.00

Chromatogram Tangerine - Revive



Comments:

The analysis of this Tangerine batch sample meets the expected chemical profile for authentic essential oil of *Citrus reticulata*. No contamination or adulteration was detected. The results provided in this GCMS quality analysis reflect the chemical composition of the oil and lot referenced above on the date of analysis.