

Sample Information

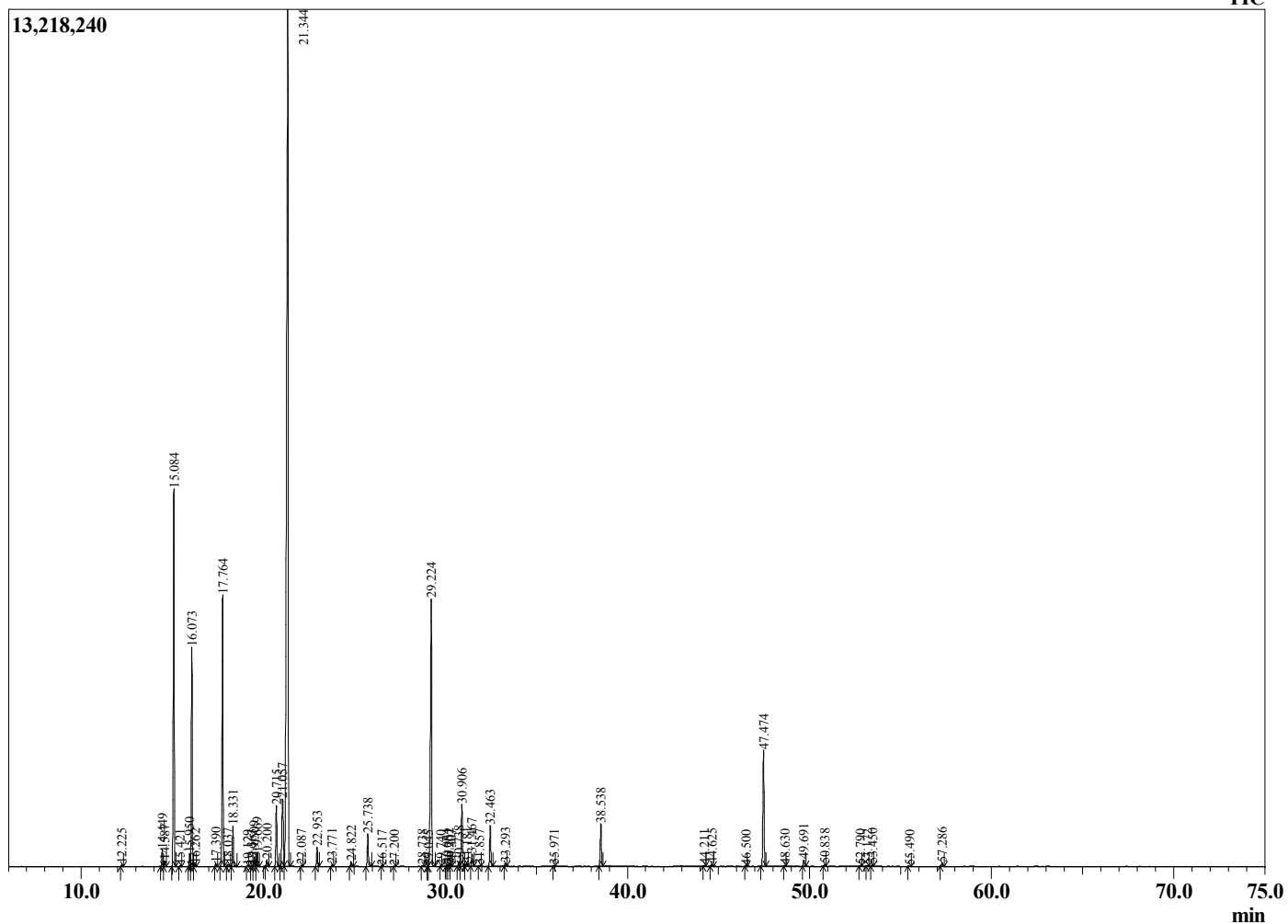
Analyzed by : Dr. Robert S. Pappas
 Analyzed : 6/18/2020 7:34:02 AM
 Sample Type : Essential Oil
 Sample Name : Rosemary - Revive
 Sample ID : 7993
 Injection Volume : 0.10
 Instrument ID : GC-2



Peak Report TIC

R.Time	Name	Area%
12.225	Santene	0.06
14.449	Tricyclene	0.45
14.587	alpha-Thujene	0.16
15.084	alpha-Pinene	10.88
15.421	beta-Fenchene	0.03
15.950	alpha-Fenchene	0.35
16.073	Camphene	6.23
16.262	Verbenone	0.05
17.390	Sabinene	0.07
17.764	beta-Pinene	8.12
18.037	3-Octanone	0.07
18.331	Myrcene	1.18
19.129	Unidentified	0.01
19.363	Pseudolimonene	0.03
19.509	alpha-Phellandrene	0.28
19.669	3-Carene	0.38
20.200	alpha-Terpinene	0.21
20.715	para-Cymene	2.07
21.057	Limonene	3.25
21.344	1,8-Cineole	42.76
22.087	(E)-beta-Ocimene	0.02
22.953	gamma-Terpinene	0.59
23.771	trans-Sabinene hydrate	0.04
24.822	Terpinolene	0.16
25.738	Linalool	1.08
26.517	Thujol	0.01
27.200	endo-Fenchol	0.02
28.738	trans-Pinocarveol	0.05
29.045	trans-Verbenol	0.02
29.224	Camphor	10.59
29.740	trans-beta-Terpineol	0.01
30.081	Pinocamphone	0.04
30.202	Pinocarvone	0.04
30.307	Isoborneol	0.02
30.738	delta-Terpineol	0.17
30.906	Borneol	2.08
31.181	Isopinocamphone	0.10
31.467	Terpinen-4-ol	0.40
31.857	para-Cymen-8-ol	0.02
32.463	alpha-Terpineol	1.43
33.293	Verbenone	0.11
35.971	Unidentified	0.01
38.538	Bornyl acetate	1.45
44.211	alpha-Ylangene	0.03
44.625	alpha-Copaene	0.08
46.500	cis-beta-Caryophyllene	0.01
47.474	trans-beta-Caryophyllene	4.22
48.630	beta-Copaene	0.01
49.691	alpha-Humulene	0.22
50.838	trans-Cadina-1(6),4-diene	0.05
52.790	beta-Bisabolene	0.03
53.172	gamma-Cadinene	0.03
53.450	delta-Cadinene	0.07
55.490	Unidentified	0.02
57.286	Caryophyllene oxide	0.13
		100.00

Chromatogram Rosemary - Revive



Comments:

The analysis of this Rosemary batch sample meets the expected chemical profile for authentic essential oil of *Rosmarinus officinalis*. No contamination or adulteration was detected.

The results provided in this GCMS quality analysis reflect the chemical composition of the oil and lot referenced above on the date of analysis.