

Sample Information

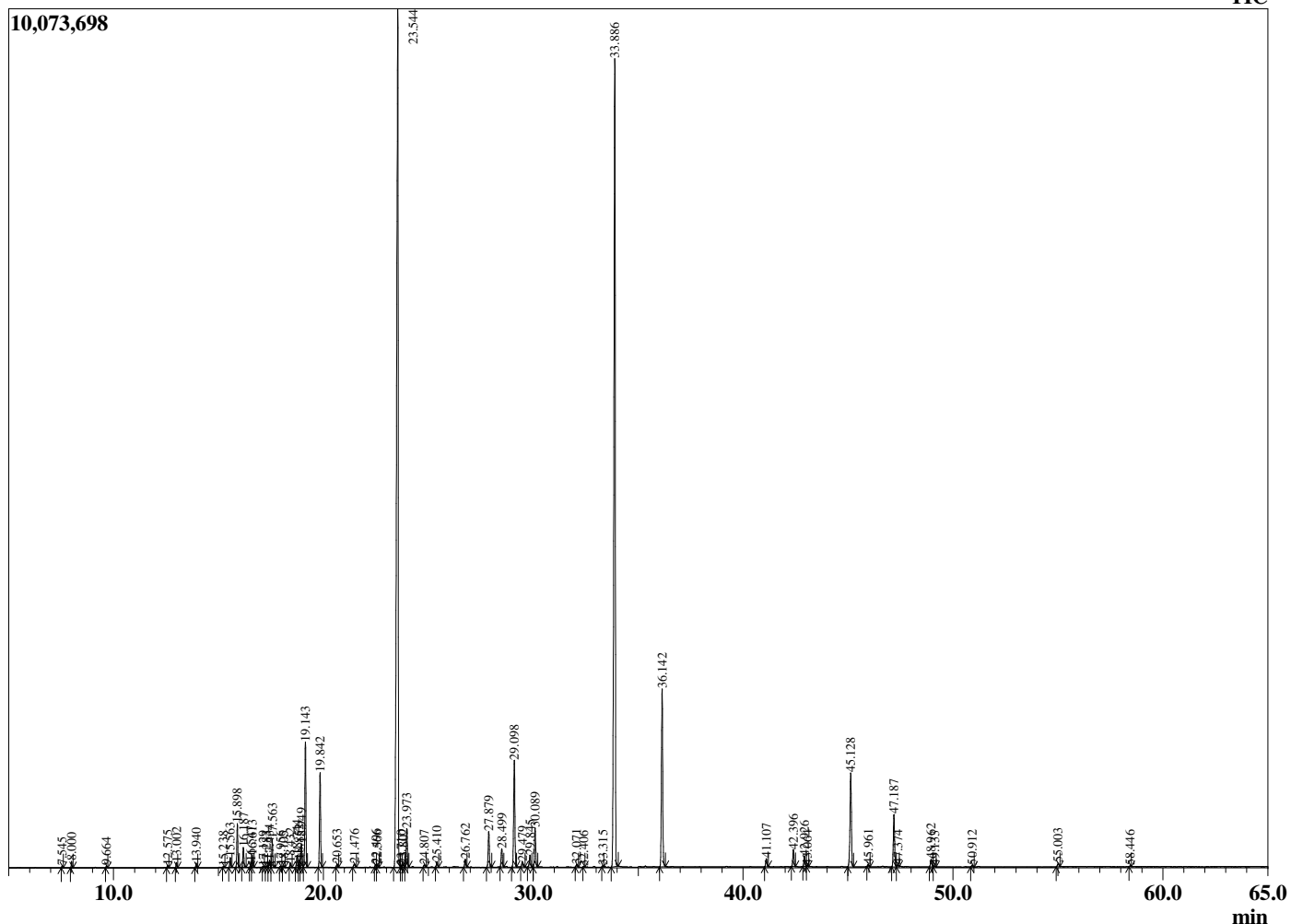
Analyzed by : Dr. Robert S. Pappas  
 Analyzed : 6/11/2020 11:53:02 PM  
 Sample Type : Essential Oil  
 Sample Name : Lavender - Revive  
 Sample ID : 2002-625K  
 Injection Volume : 0.10  
 Instrument ID : GC-3



Peak Report TIC

| R.Time | Name                            | Area%  |
|--------|---------------------------------|--------|
| 3.770  | 2-Methyl 3-buten-2-ol           | 0.01   |
| 7.545  | Butyl acetate                   | 0.03   |
| 8.000  | Hexyl methyl ether              | 0.12   |
| 9.664  | n-Hexanol                       | 0.04   |
| 12.575 | alpha-Thujene                   | 0.06   |
| 13.002 | alpha-Pinene                    | 0.12   |
| 13.940 | Camphene                        | 0.12   |
| 15.238 | Sabinene                        | 0.02   |
| 15.563 | 1-Octen-3-ol                    | 0.25   |
| 15.898 | 3-Octanone                      | 1.12   |
| 16.187 | Myrcene                         | 0.55   |
| 16.547 | Butyl butyrate                  | 0.13   |
| 16.613 | 3-Octanol                       | 0.32   |
| 17.129 | Pseudolimonene                  | 0.02   |
| 17.283 | alpha-Phellandrene              | 0.03   |
| 17.434 | delta-3-Carene                  | 0.19   |
| 17.563 | Hexyl acetate                   | 0.76   |
| 17.956 | alpha-Terpinene                 | 0.03   |
| 18.105 | ortho-Cymene                    | 0.04   |
| 18.432 | para-Cymene                     | 0.12   |
| 18.744 | Limonene                        | 0.34   |
| 18.852 | beta-Phellandrene               | 0.20   |
| 18.949 | 1,8-cineole                     | 0.67   |
| 19.143 | cis-beta-Ocimene                | 3.44   |
| 19.842 | trans-beta-Ocimene              | 2.72   |
| 20.653 | gamma-Terpinene                 | 0.09   |
| 21.476 | cis-Linalool oxide (furanoid)   | 0.11   |
| 22.496 | Terpinolene                     | 0.09   |
| 22.566 | trans-Linalool oxide (furanoid) | 0.07   |
| 23.544 | Linalool                        | 36.30  |
| 23.710 | Hotrienol                       | 0.05   |
| 23.802 | Hexyl propionate                | 0.09   |
| 23.973 | 1-Octen-3-yl acetate            | 1.12   |
| 24.807 | 3-Octyl acetate                 | 0.07   |
| 25.410 | allo-Ocimene                    | 0.17   |
| 26.762 | Camphor                         | 0.24   |
| 27.879 | Lavandulol                      | 1.10   |
| 28.499 | Borneol                         | 0.58   |
| 29.098 | Terpinen-4-ol                   | 3.55   |
| 29.479 | Cryptone                        | 0.17   |
| 29.845 | Hexyl butyrate                  | 0.41   |
| 30.089 | alpha-Terpineol                 | 1.25   |
| 32.071 | Nerol                           | 0.09   |
| 32.406 | Bornyl formate                  | 0.02   |
| 33.315 | Cuminal                         | 0.03   |
| 33.886 | Linalyl acetate                 | 29.85  |
| 36.142 | Lavandulyl acetate              | 5.95   |
| 41.107 | Neryl acetate                   | 0.27   |
| 42.396 | Geranyl acetate                 | 0.54   |
| 42.926 | Hexyl hexanoate                 | 0.33   |
| 43.064 | 7-epi-Sesquithujene             | 0.03   |
| 45.128 | beta-Caryophyllene              | 3.54   |
| 45.961 | trans-alpha-Bergamotene         | 0.06   |
| 47.187 | trans-beta-Farnesene            | 1.82   |
| 47.374 | alpha-Humulene                  | 0.07   |
| 48.962 | Germacrene D                    | 0.27   |
| 49.133 | Unidentified                    | 0.03   |
| 50.912 | gamma-Cadinene                  | 0.07   |
| 55.003 | Caryophyllene oxide             | 0.13   |
| 58.446 | tau-Cadinol                     | 0.02   |
|        |                                 | 100.00 |

Chromatogram Lavender - Revive



Comments:

The analysis of this Lavender batch sample meets the expected chemical profile for authentic essential oil of *Lavandula angustifolia*. No contamination or adulteration was detected. The results provided in this GCMS quality analysis reflect the chemical composition of the oil and lot referenced above on the date of analysis.