

Sample Information

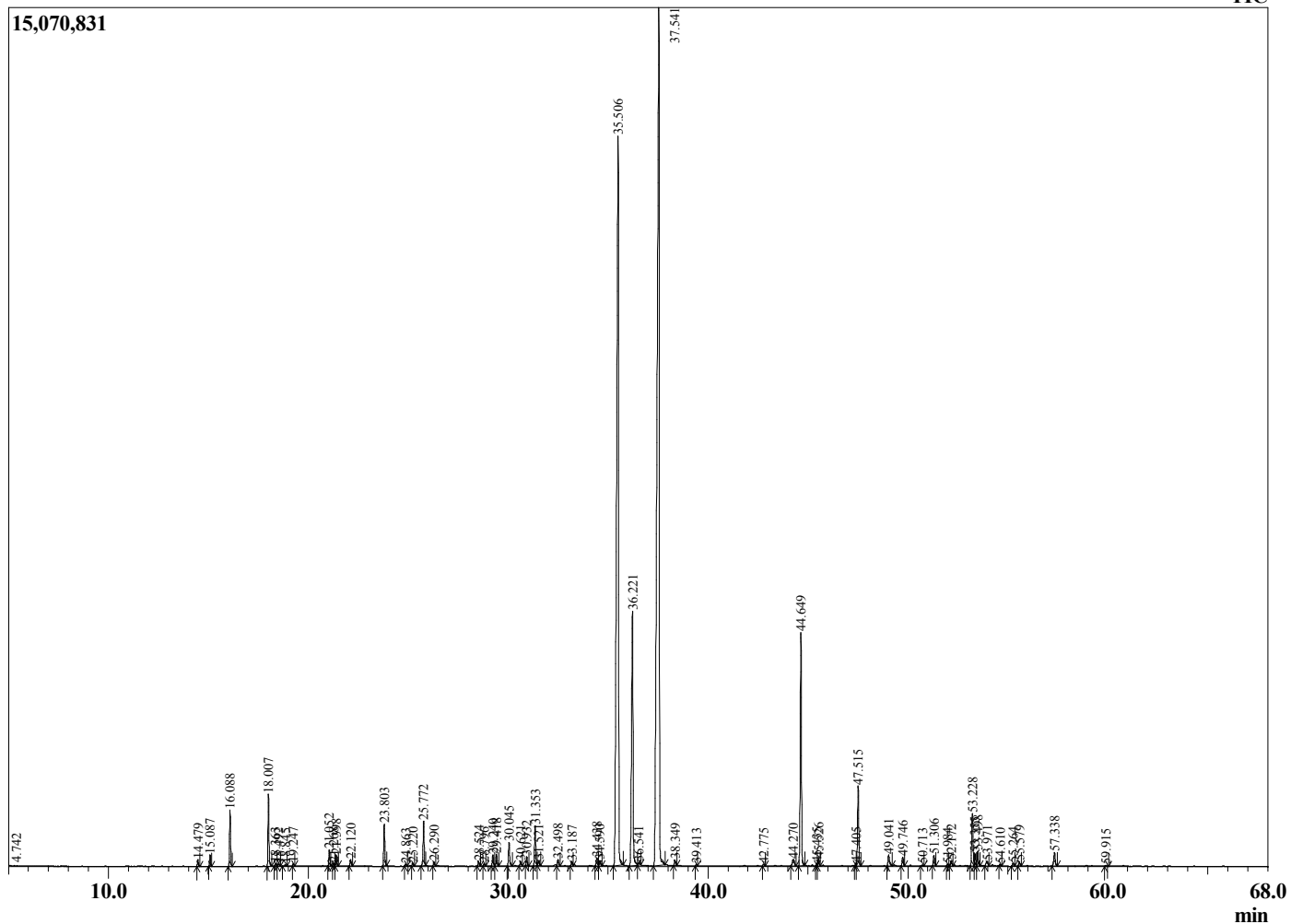
Analyzed by : Dr. Robert S. Pappas
 Analyzed : 1/16/2020 1:40:07 AM
 Sample Type : Essential Oil
 Sample Name : Lemongrass - Revive
 Sample ID : E0C0924C
 Injection Volume : 0.10
 Instrument ID : GC-2



Peak Report TIC

R.Time	Name	Area%
4.742	Vinylidimethylcarbinol	0.02
14.479	Tricyclene	0.14
15.087	alpha-Pinene	0.22
16.088	Camphene	1.13
18.007	6-Methyl-5-hepten-2-one	1.51
18.363	Myrcene	0.05
18.492	2,3-Dehydro-1,8-cineole	0.06
18.845	Z-5-Octenal	0.03
19.247	Octanal	0.05
21.052	Limonene	0.36
21.268	1,8-Cineole	0.07
21.398	Z-beta-Ocimene	0.24
22.120	E-beta-Ocimene	0.15
23.803	4-Nonanone	0.96
24.863	Terpinolene	0.05
25.220	Rosefuran	0.07
25.772	Linalool	1.06
26.290	cis-Chrysanthemal	0.09
28.524	Pulegone	0.11
28.796	exo-Isocitral	0.05
29.240	trans-Chrysanthemal	0.27
29.418	Citronellal	0.29
30.045	Verbenol	0.58
30.621	Isoborneol	0.12
30.932	Borneol	0.22
31.353	trans-Isocitral	0.97
31.521	Unidentified	0.13
32.498	alpha-Terpineol	0.15
33.187	Decanal	0.11
34.438	Nerol	0.23
34.590	Citronellol	0.16
35.506	Neral	30.04
36.221	Geraniol	7.68
36.541	Piperitone	0.09
37.541	Geranial	39.62
38.349	Unidentified	0.15
39.413	Geranyl formate	0.03
42.775	Citronellyl acetate	0.05
44.270	Cyclosativene	0.28
44.649	Geranyl acetate	6.04
45.435	beta-Cubebene	0.05
45.526	beta-Elemene	0.18
47.405	beta-Ylangene	0.04
47.515	beta-Caryophyllene	2.11
49.041	E-Isoeugenol	0.32
49.746	alpha-Humulene	0.22
50.713	trans-Cadina-1(6),4-diene	0.03
51.306	Germacrene D	0.28
51.984	trans-Muurolo-4(14),5-diene	0.04
52.172	epi-Cubebol	0.13
53.228	gamma-Cadinene	1.41
53.355	Cubebol	0.32
53.498	delta-Cadinene	0.39
53.971	E-gamma-Bisabolene	0.17
54.610	alpha-Cadinene	0.04
55.264	alpha-Elemol	0.08
55.579	Geranyl butyrate	0.10
57.338	Caryophyllene oxide	0.41
59.915	1-epi-Cubebol	0.03
		100.00

Chromatogram Lemongrass - Revive



Comments:

The analysis of this Lemongrass batch sample meets the expected chemical profile for authentic essential oil of *Cymbopogon flexuosus*. No contamination or adulteration was detected.

The results provided in this GCMS quality analysis reflect the chemical composition of the oil and lot referenced above on the date of analysis.