

Sample Information

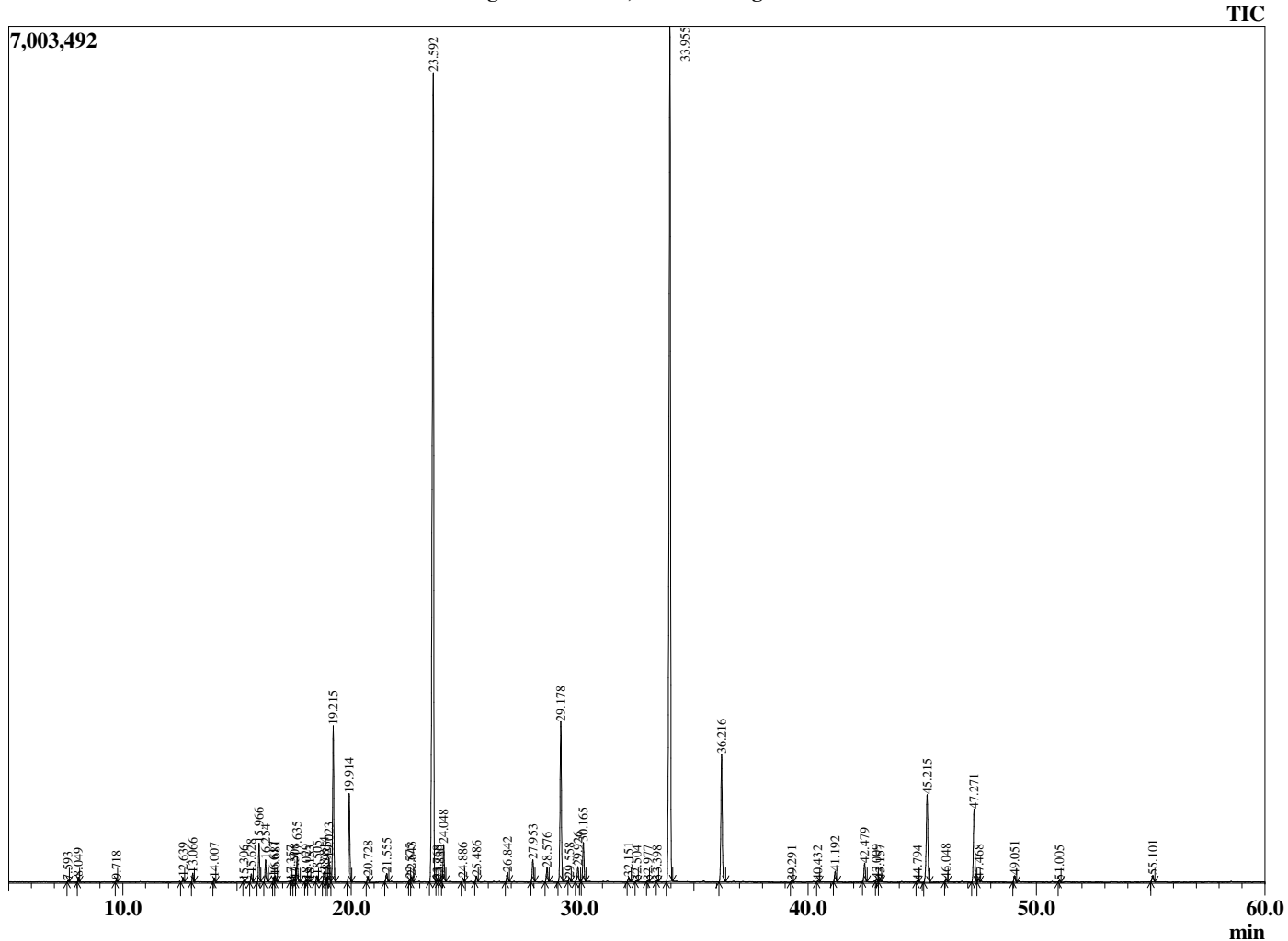
Analyzed by : Dr. Robert S. Pappas  
 Analyzed : 3/12/2020 7:42:40 PM  
 Sample Type : Essential Oil  
 Sample Name : Lavender, Certified Organic - Revive  
 Sample ID : 8373  
 Injection Volume : 0.10  
 Instrument ID : GC-3



Peak Report TIC

R.Time	Name	Area%
7.593	Butyl acetate	0.02
8.049	Hexyl methyl ether	0.10
9.718	n-Hexanol	0.04
12.639	alpha-Thujene	0.11
13.066	alpha-Pinene	0.22
14.007	Camphene	0.11
15.306	Sabinene	0.02
15.628	1-Octen-3-ol	0.23
15.966	3-Octanone	1.06
16.254	Myrcene	0.63
16.617	Butyl butyrate	0.12
16.681	3-Octanol	0.18
17.357	alpha-Phellandrene	0.03
17.508	delta-3-Carene	0.08
17.635	Hexyl acetate	0.71
18.029	alpha-Terpinene	0.05
18.183	ortho-Cymene	0.02
18.505	para-Cymene	0.17
18.814	Limonene	0.29
18.925	beta-Phellandrene	0.13
19.023	1,8-cineole	0.71
19.215	cis-beta-Ocimene	4.54
19.914	trans-beta-Ocimene	2.60
20.728	gamma-Terpinene	0.17
21.555	cis-Linalool oxide (furanoid)	0.30
22.575	Terpinolene	0.08
22.643	trans-Linalool oxide (furanoid)	0.17
23.592	Linalool	31.27
23.768	Hotrienol	0.05
23.880	Hexyl propionate	0.04
24.048	1-Octen-3-yl acetate	1.14
24.886	3-Octyl acetate	0.13
25.486	allo-Ocimene	0.17
26.842	Camphor	0.31
27.953	Lavandulol	0.72
28.576	Borneol	0.47
29.178	Terpinen-4-ol	5.43
29.558	Cryptone	0.13
29.926	Hexyl butyrate	0.53
30.165	alpha-Terpineol	1.30
32.151	Nerol	0.14
32.504	Bornyl formate	0.04
32.977	Hexyl 2-methylbutyrate	0.03
33.398	Cuminal	0.02
33.955	Linalyl acetate	32.47
36.216	Lavandulyl acetate	4.50
39.291	Hexyl tiglate	0.03
40.432	Unidentified	0.03
41.192	Neryl acetate	0.37
42.479	Geranyl acetate	0.64
43.009	Hexyl hexanoate	0.08
43.157	Sesquithujene isomer	0.06
44.794	cis-alpha-Bergamotene	0.04
45.215	beta-Caryophyllene	3.54
46.048	trans-alpha-Bergamotene	0.10
47.271	trans-beta-Farnesene	2.70
47.468	alpha-Humulene	0.11
49.051	Germacrene D	0.24
51.005	gamma-Cadinene	0.05
55.101	Caryophyllene oxide	0.25
		100.00

Chromatogram Lavender, Certified Organic - Revive



Comments:

The analysis of this Lavender, Certified Organic batch sample meets the expected chemical profile for authentic essential oil of *Lavandula angustifolia*. No contamination or adulteration was detected. The results provided in this GCMS quality analysis reflect the chemical composition of the oil and lot referenced above on the date of analysis.