

Sample Information

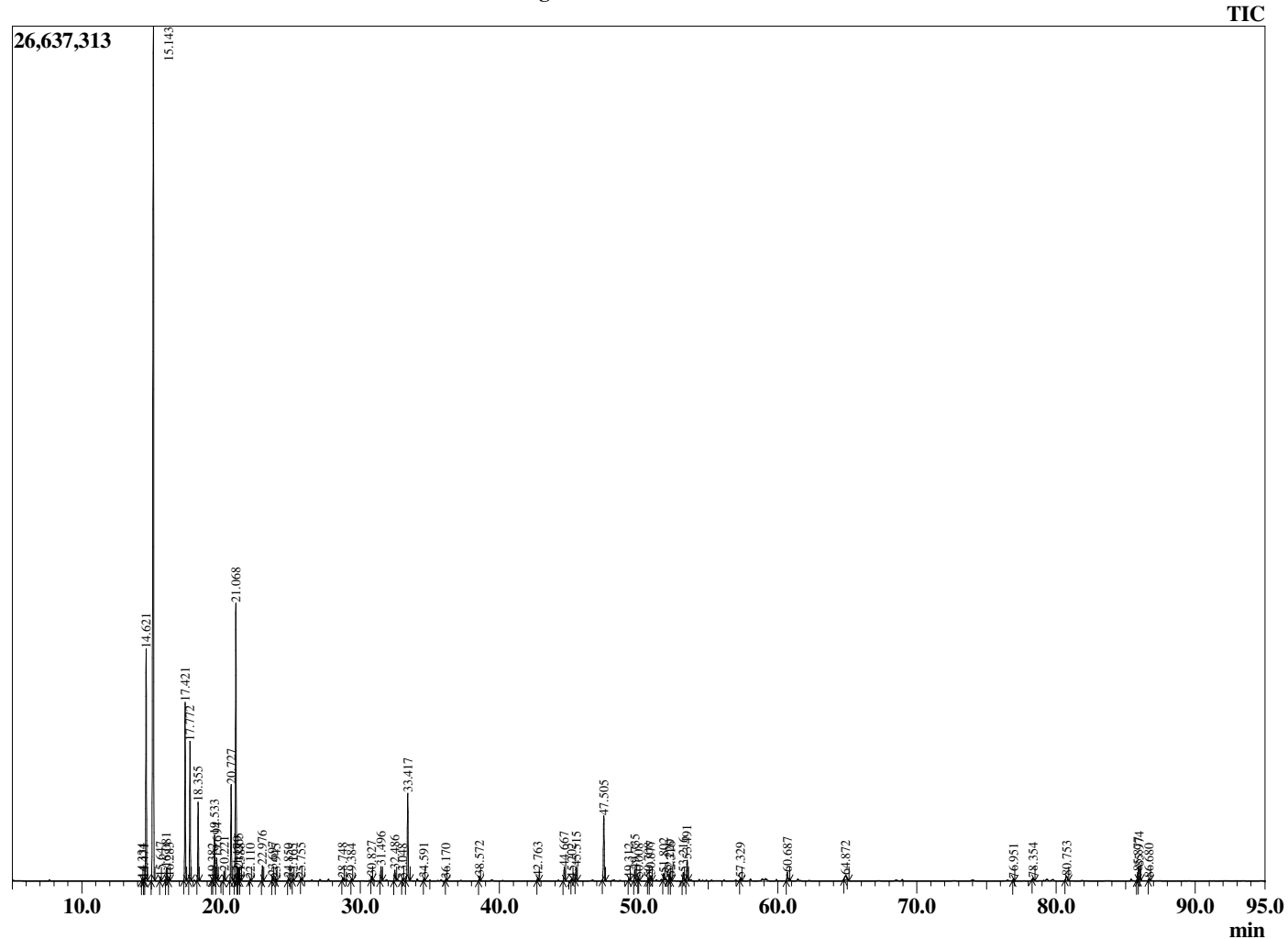
Analyzed by : Dr. Robert S. Pappas  
 Analyzed : 1/16/2020 5:55:55 PM  
 Sample Type : Essential Oil  
 Sample Name : Boswellia carterii - Revive  
 Sample ID : G0D0114E  
 Injection Volume : 0.10  
 Instrument ID : GC-2



Peak Report TIC

R.Time	Name	Area%
14.334	Hashishene	0.07
14.471	Tricyclene	0.06
14.621	alpha-Thujene	8.01
15.143	alpha-Pinene	41.40
15.647	Thujadiene isomer	0.13
16.081	Camphene	0.45
16.283	Thuja-2,4(10)diene	0.11
17.421	Sabinene	6.35
17.772	beta-Pinene	4.93
18.355	Myrcene	2.78
19.382	Pseudolimonene	0.07
19.533	alpha-Phellandrene	1.76
19.694	delta-3-Carene	0.84
20.221	alpha-Terpinene	0.35
20.727	para-Cymene	3.66
21.068	Limonene	11.20
21.179	beta-Phellandrene	0.32
21.265	1,8-cineole	0.43
21.388	cis-beta-Ocimene	0.09
22.110	trans-beta-Ocimene	0.06
22.976	gamma-Terpinene	0.57
23.697	1-Octanol	0.16
23.945	Pinol	0.06
24.850	Terpinolene	0.10
25.165	para-Cymenene	0.06
25.755	Linalool	0.09
28.748	trans-Pinocarveol	0.13
29.384	alpha-Phellandren-8-ol	0.09
30.827	para-Mentha-1,5-dien-8-ol	0.15
31.496	Terpinen-4-ol	0.59
32.486	alpha-Terpineol	0.57
33.048	alpha-Phellandrene epoxide	0.08
33.417	Octyl acetate	3.75
34.591	Decyl methyl ether	0.11
36.170	Carvone	0.07
38.572	Bornyl acetate	0.19
42.763	alpha-Cubebene	0.14
44.667	alpha-Copaene	0.62
45.202	beta-Bourbonene	0.08
45.515	beta-Elemene	0.58
47.505	beta-Caryophyllene	2.91
49.312	trans-Murrola-3,5-diene	0.08
49.735	alpha-Humulene	0.51
50.008	Alloaromadendrene	0.09
50.708	10-beta-H-Cadina-1(6),4-diene	0.14
50.877	trans-Cadina-1(6),4-diene	0.25
51.802	beta-Selinene	0.27
52.220	alpha-Selinene	0.29
52.316	alpha-Murolene	0.14
53.216	gamma-Cadinene	0.36
53.491	delta-Cadinene	0.93
57.329	Caryophyllene oxide	0.14
60.687	tau-Cadinol	0.44
64.872	Unidentified	0.46
76.951	Neocembrene isomer	0.10
78.354	Unidentified	0.11
80.753	Unidentified	0.33
85.877	Incensole	0.37
85.974	Serratol	0.74
86.680	Incensyl acetate	0.10
		100.00

Chromatogram Boswellia carterii - Revive



Comments:

The analysis of this Frankincense batch sample meets the expected chemical profile for authentic essential oil of *Boswellia carterii*. No contamination or adulteration was detected. The results provided in this GCMS quality analysis reflect the chemical composition of the oil and lot referenced above on the date of analysis.