

Sample Information

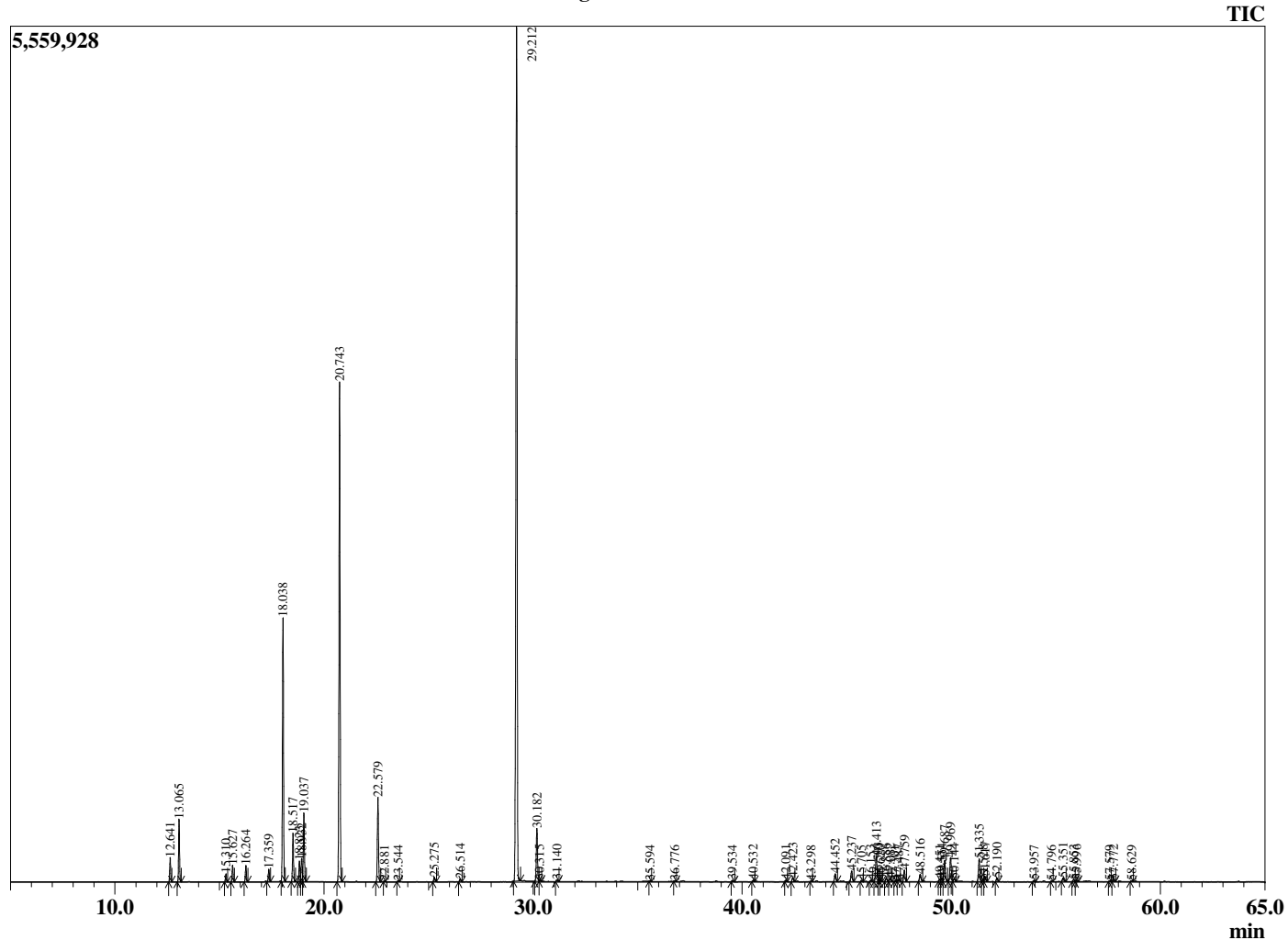
Analyzed by : Dr. Robert S. Pappas  
 Analyzed : 11/22/2019 7:00:19 PM  
 Sample Type : Essential Oil  
 Sample Name : Tea Tree - Revive  
 Sample ID : E0C0828D  
 Injection Volume : 0.10  
 Instrument ID : GC-3



Peak Report TIC

R.Time	Name	Area%
4.357	2-Methylbutanal	0.02
12.641	alpha-Thujene	0.84
13.065	alpha-Pinene	2.20
15.310	Sabinene	0.30
15.627	beta-Pinene	0.63
16.264	Myrcene	0.62
17.359	alpha-Phellandrene	0.49
18.038	alpha-Terpinene	10.43
18.517	para-Cymene	1.82
18.823	Limonene	0.83
18.932	beta-Phellandrene	0.91
19.037	1,8-Cineole	2.77
20.743	gamma-Terpinene	20.71
22.579	Terpinolene	3.52
22.881	para-Cymenene	0.03
23.544	Linalool	0.04
25.275	cis-para-Menth-2-en-1-ol	0.20
26.514	trans-para-Menth-2-en-1-ol	0.13
29.212	Terpinen-4-ol	41.08
30.182	alpha-Terpineol	2.44
30.315	cis-Piperitol	0.06
31.140	trans-Piperitol	0.08
35.594	cis-Ascaridol glycol	0.03
36.776	trans-Ascaridol glycol	0.04
39.534	delta-Elementene	0.06
40.532	alpha-Cubebene	0.06
42.091	Isoledene	0.06
42.423	alpha-Copaene	0.21
43.298	beta-Elementene	0.03
44.452	alpha-Gurjunene	0.40
45.237	beta-Caryophyllene	0.57
45.705	Unidentified	0.06
46.153	Unidentified	0.07
46.413	Aromadendrene	1.35
46.503	Unidentified	0.14
46.620	Unidentified	0.06
46.886	alpha-Guaiene	0.19
47.082	trans-Murrola-3,5-diene	0.17
47.301	Unidentified	0.03
47.487	alpha-Humulene	0.09
47.759	Alloaromadendrene	0.60
48.516	10-beta-H-Cadina-1(6),4-diene	0.43
49.451	delta-Selinene	0.11
49.554	Unidentified	0.18
49.687	Viridiflorene (Ledene)	1.19
49.969	Bicyclogermacrene	1.25
50.144	alpha-Murolene	0.15
51.335	delta-Cadinene	1.15
51.528	trans-Calamenene	0.08
51.617	Zonarene	0.27
52.190	trans-Cadina-1,4-diene	0.19
53.957	Unidentified	0.06
54.796	Spathulenol	0.03
55.351	Globulol	0.19
55.853	Viridiflorol	0.10
55.996	Guaiol	0.08
57.579	Unidentified	0.05
57.772	1-epi-Cubenol	0.09
58.629	Unidentified	0.05
		100.00

Chromatogram Tea Tree - Revive



Comments:

The analysis of this Tea Tree Oil batch sample meets the expected chemical profile for authentic essential oil of *Melaleuca alternifolia*. No contamination or adulteration was detected. The results provided in this GCMS quality analysis reflect the chemical composition of the oil and lot referenced above on the date of analysis.

