

Sample Information

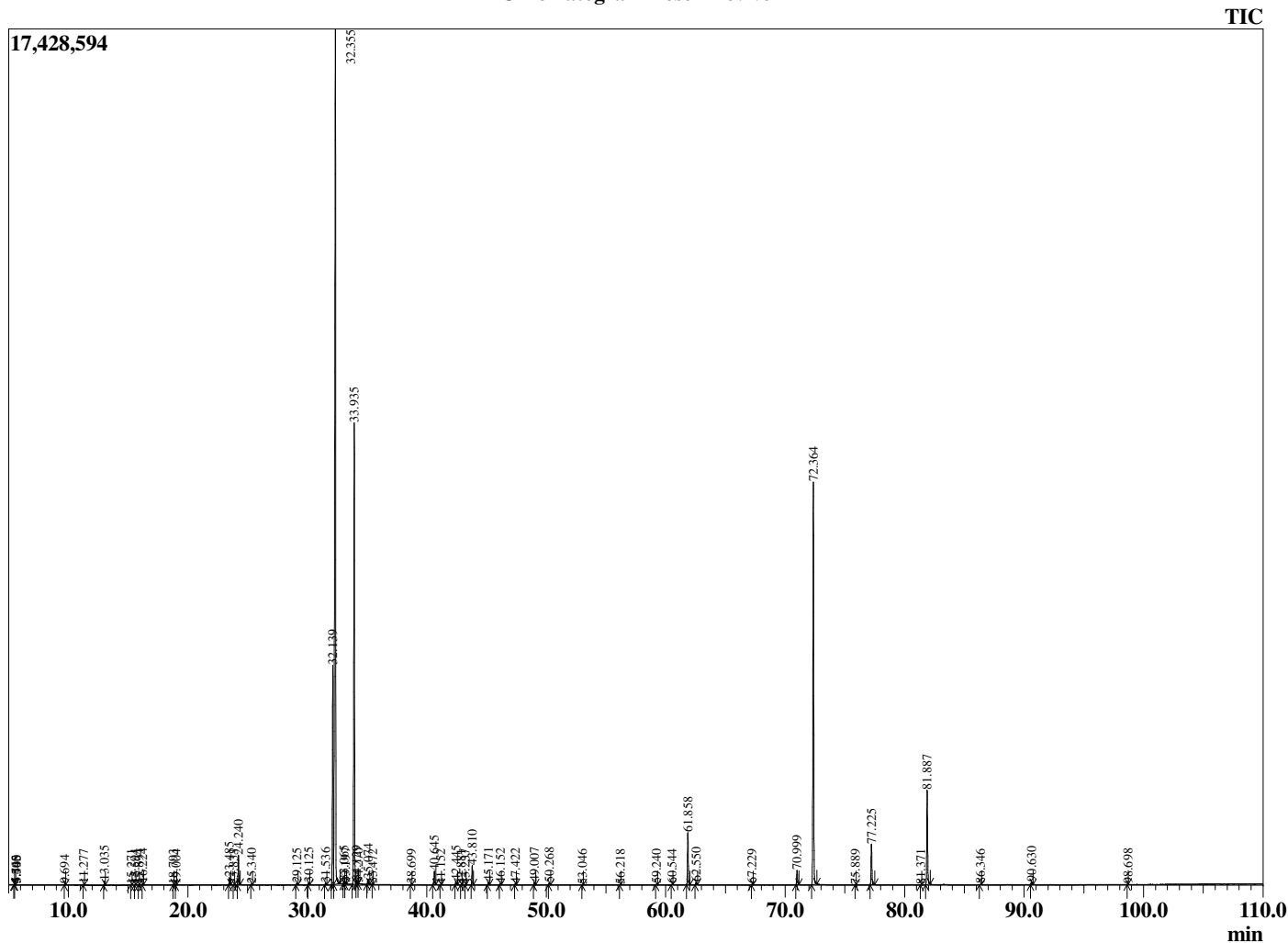
Analyzed by : Dr. Robert S. Pappas
 Analyzed : 1/29/2020 11:37:16 PM
 Sample Type : Essential Oil
 Sample Name : Rose - Revive
 Sample ID : E0C1009G
 Injection Volume : 0.10
 Instrument ID : GC-3



Peak Report TIC

R.Time	Name	Area%
3.046	Ethanol	0.16
4.798	Valeraldehyde	0.01
5.460	1-Pentanol	0.01
5.545	2-Methyl butanol	0.01
9.694	Hexanol	0.03
11.277	Heptanal	0.02
13.035	alpha-Pinene	0.11
15.271	Sabinene	0.01
15.594	beta-Pinene	0.02
15.894	6-Methyl hept-5-en-2-one	0.01
16.224	Myrcene	0.05
18.793	Limonene	0.01
19.004	1,8-Cineole	0.01
23.485	Linalool	0.24
23.833	Nonanal	0.01
24.240	Phenethyl alcohol	1.02
25.340	trans-Rose oxide	0.03
29.125	Terpinen-4-ol	0.06
30.125	alpha-Terpineol	0.09
31.536	Rhodinol	0.08
32.139	Nerol	8.18
32.355	Citronellol	41.61
33.065	Neral	0.11
33.197	Isogeraniol	0.03
33.935	Geraniol	18.82
34.129	2-Phenethyl acetate	0.14
34.270	Unidentified	0.00
35.074	Geranial	0.21
35.472	Citronellyl formate	0.01
38.699	Methyl geranate	0.02
40.645	Eugenol	0.59
41.152	Neryl acetate	0.01
42.445	Geranyl acetate	0.15
42.881	beta-Bourbonene	0.01
43.237	beta-Elemene	0.01
43.810	Methyleugenol	0.72
45.171	beta-Caryophyllene	0.11
46.152	alpha-Guaiene	0.04
47.422	alpha-Humulene	0.05
49.007	Germacrene D	0.11
50.268	Unidentified	0.09
53.046	Elemol	0.01
56.218	Hexadecane	0.01
59.240	alpha-Eudesmol	0.02
60.544	Heptadecane	0.02
61.858	Heptadecane	2.23
62.550	(2E,6E)-Farnesol	0.11
67.229	Octadecane	0.03
70.999	Nonadecane	0.62
72.364	Nonadecane	17.51
75.889	Eicosane	1.88
77.225	Eicosane	0.01
81.371	Heneicosane	0.01
81.887	Heneicosane	4.37
86.346	Docosane	0.02
90.630	Tricosane	0.15
98.698	Pentacosane	0.01
		100.00

Chromatogram Rose - Revive



Comments:

The analysis of this Rose batch sample meets the expected chemical profile for authentic essential oil of *Rosa damascena*. No contamination or adulteration was detected. The results provided in this GCMS quality analysis reflect the chemical composition of the oil and lot referenced above on the date of analysis.