

Sample Information

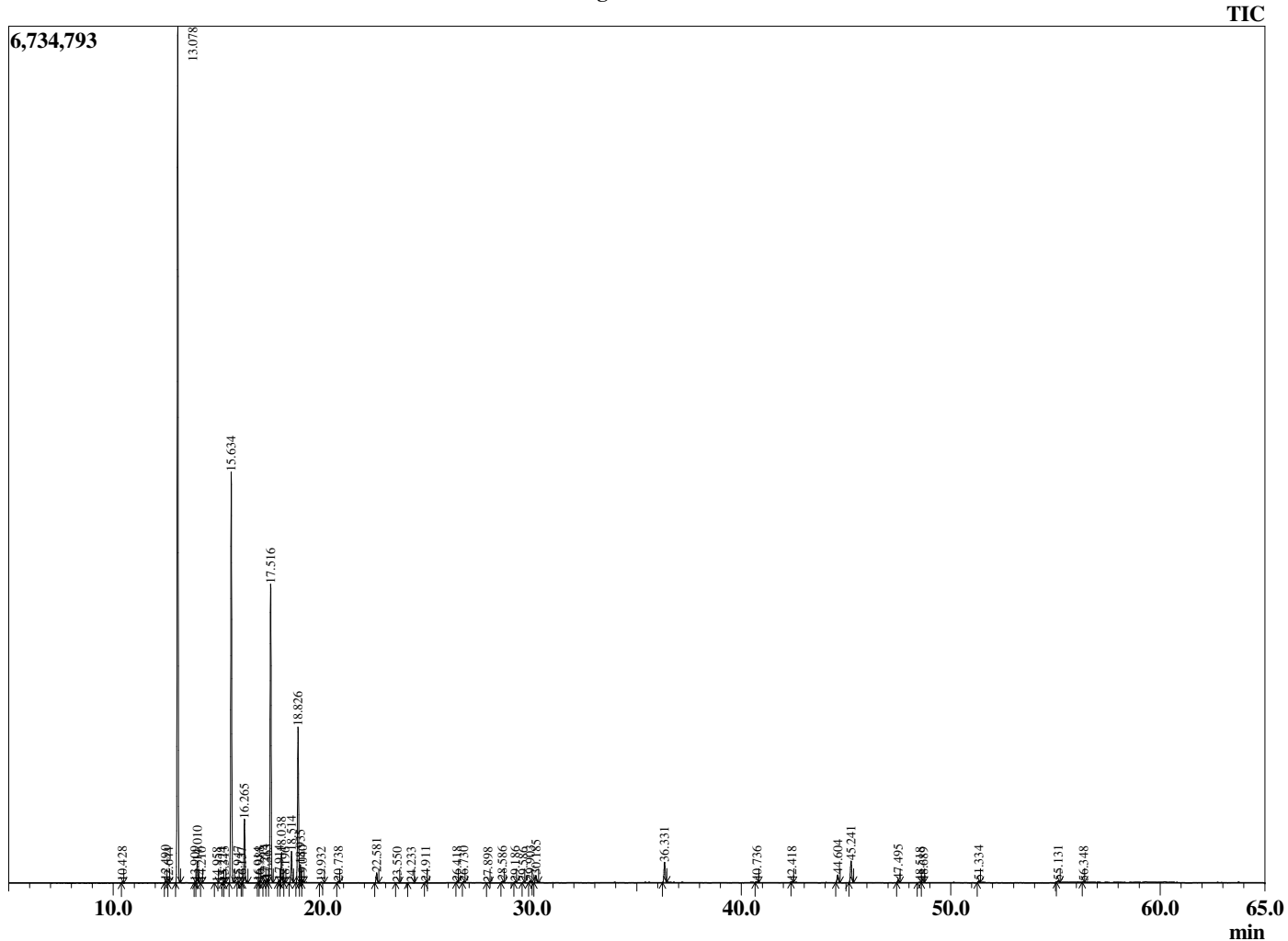
Analyzed by : Dr. Robert S. Pappas  
 Analyzed : 11/22/2019 7:13:25 AM  
 Sample Type : Essential Oil  
 Sample Name : Pine - Revive  
 Sample ID : F0C1104A  
 Injection Volume : 0.10  
 Instrument ID : GC-3



Peak Report TIC

R.Time	Name	Area%
10.428	Santene	0.04
12.490	Tricyclene	0.09
12.644	alpha-Thujene	0.01
13.078	alpha-Pinene	40.67
13.909	alpha-Fenchene	0.05
14.010	Camphene	1.02
14.210	Thuja-2,4(10)diene	0.02
14.958	Unidentified	0.02
15.224	Unidentified	0.01
15.313	Sabinene	0.03
15.634	beta-Pinene	20.52
15.947	Camphene isomer	0.03
16.137	3-para-Menthene	0.01
16.265	Myrcene	3.25
16.914	alpha-Terpinene	0.02
16.988	1-para-Menthene	0.02
17.214	Pseudolimonene	0.15
17.363	alpha-Phellandrene	0.17
17.516	delta-3-Carene	15.83
17.914	1,4-Cineole	0.10
18.038	alpha-Terpinene	1.57
18.196	ortho-Cymene	0.02
18.514	para-Cymene	1.67
18.826	Limonene	8.23
18.935	beta-Phellandrene	0.92
19.040	1,8-Cineole	0.10
19.932	trans-beta-Ocimene	0.03
20.738	gamma-Terpinene	0.07
22.581	Terpinolene	0.57
23.550	Linalool	0.02
24.233	Unidentified	0.03
24.911	alpha-Fenchol	0.03
26.418	trans-Pinocarveol	0.03
26.730	trans-Verbenol	0.05
27.898	Unidentified	0.02
28.586	Borneol	0.08
29.186	Terpinen-4-ol	0.03
29.586	para-Cymen-8-ol	0.03
29.903	Unidentified	0.10
30.185	alpha-Terpineol	0.46
36.331	Bornyl acetate	1.28
40.736	alpha-Longipinene	0.07
42.418	alpha-Copaene	0.05
44.604	Junipene	0.55
45.241	beta-Caryophyllene	1.47
47.495	alpha-Humulene	0.18
48.518	trans-Cadina-1(6),4-diene	0.03
48.689	Unidentified	0.02
51.334	delta-Cadinene	0.09
55.131	Caryophyllene oxide	0.12
56.348	Unidentified	0.02
		100.00

Chromatogram Pine - Revive



Comments:

The analysis of this Pine Oil batch sample meets the expected chemical profile for authentic essential oil of *Pinus sylvestris*. No contamination or adulteration was detected. The results provided in this GCMS quality analysis reflect the chemical composition of the oil and lot referenced above on the date of analysis.