

Sample Information

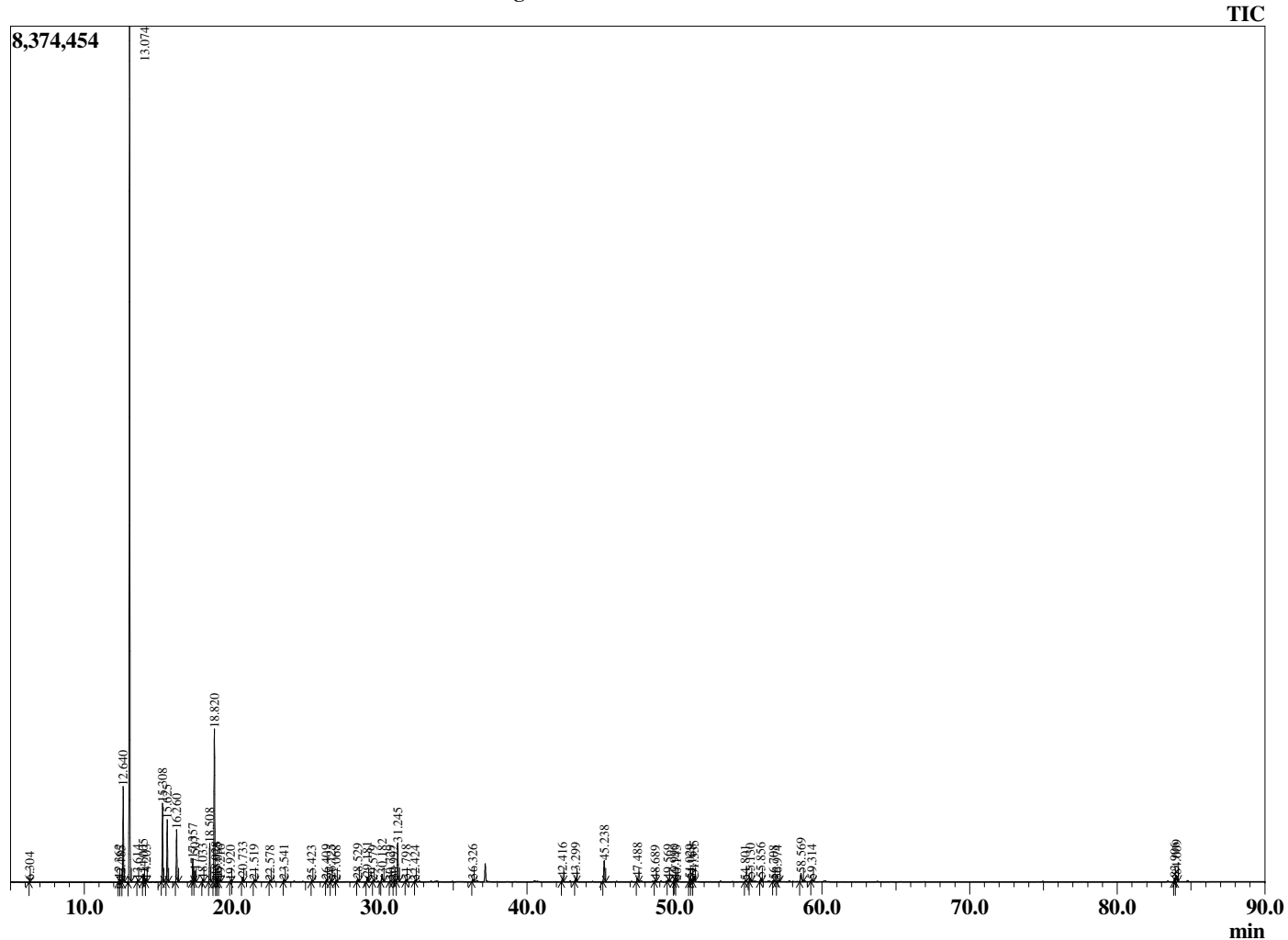
Analyzed by : Dr. Robert S. Pappas  
 Analyzed : 11/22/2019 11:09:03 AM  
 Sample Type : Essential Oil  
 Sample Name : Frankincense - carterii - Revive  
 Sample ID : F0C1107A  
 Injection Volume : 0.10  
 Instrument ID : GC-3



Peak Report TIC

R.Time	Name	Area%
6.304	Toluene	0.04
12.362	Hashishene	0.17
12.485	Tricyclene	0.07
12.640	alpha-Thujene	5.55
13.074	alpha-Pinene	51.57
13.614	Thujadiene isomer	0.11
14.005	Camphene	0.50
14.203	Thuja-2,4(10)diene	0.14
15.308	Sabinene	4.92
15.625	beta-Pinene	3.91
16.260	Myrcene	3.39
17.357	alpha-Phellandrene	1.52
17.507	delta-3-Carene	0.70
18.033	alpha-Terpinene	0.19
18.508	para-Cymene	2.60
18.820	Limonene	10.59
18.928	beta-Phellandrene	0.32
19.035	1,8-Cineole	0.28
19.216	cis-beta-Ocimene	0.15
19.920	trans-beta-Ocimene	0.08
20.733	gamma-Terpinene	0.32
21.519	1-Octanol	0.16
22.578	Terpinolene	0.07
23.541	Linalool	0.15
25.423	alpha-Campholenal	0.07
26.409	trans-Pinocarveol	0.09
26.725	trans-Verbenol	0.19
27.068	alpha-Phellandren-8-ol	0.07
28.529	para-Mentha-1,5-dien-8-ol	0.23
29.181	Terpinen-4-ol	0.40
29.579	para-Cymen-8-ol	0.07
30.182	alpha-Terpineol	0.67
30.729	alpha-Phellandrene epoxide	0.07
30.992	Verbenone	0.10
31.245	Octyl acetate	3.09
31.798	trans-Carveol	0.10
32.424	Decyl methyl ether	0.06
36.326	Bornyl acetate	0.17
42.416	alpha-Copaene	0.33
43.299	beta-Elemene	0.31
45.238	beta-Caryophyllene	1.80
47.488	alpha-Humulene	0.34
48.689	trans-Cadina-1(6),4-diene	0.10
49.569	beta-Selinene	0.14
49.990	alpha-Selinene	0.21
50.143	alpha-Murolene	0.08
51.029	gamma-Cadinene	0.22
51.168	Cubebol	0.13
51.335	delta-Cadinene	0.48
54.801	Spathulenol	0.08
55.130	Caryophyllene oxide	0.28
55.856	Viridiflorol	0.30
56.708	Unidentified	0.11
56.974	10-epi-gamma-Eudesmol	0.19
58.569	alpha-Murolol (=Torreyol)	0.86
59.314	Unidentified	0.19
83.906	Incensole	0.32
84.009	Serratol	0.65
		100.00

Chromatogram Frankincense - carterii - Revive



Comments:

The analysis of this Frankincense - carterii batch sample meets the expected chemical profile for authentic essential oil of *Boswellia carterii*. No contamination or adulteration was detected. The results provided in this GCMS quality analysis reflect the chemical composition of the oil and lot referenced above on the date of analysis.