

Sample Information

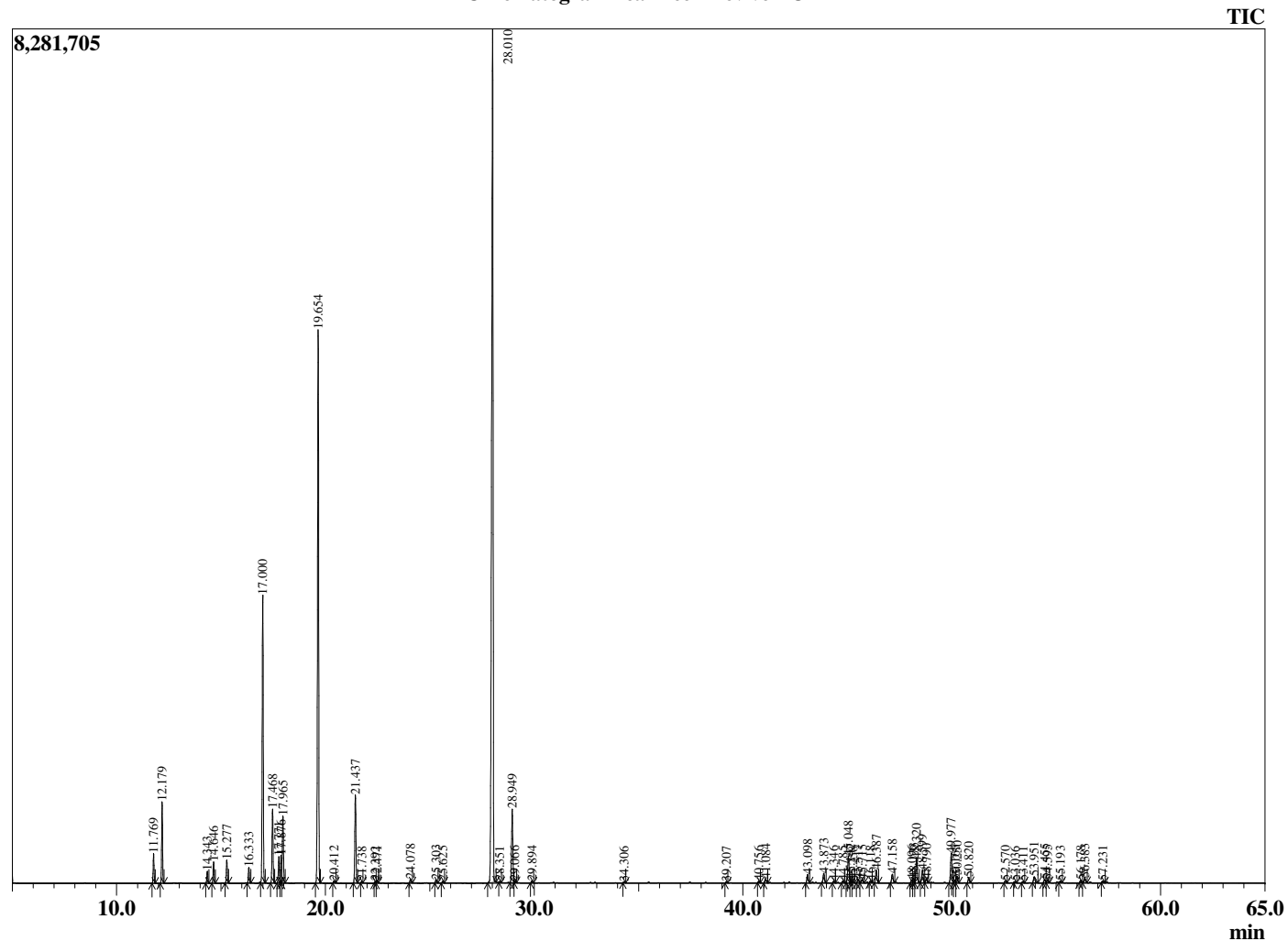
Analyzed by : Dr. Robert S. Pappas
 Analyzed : 2/10/2019 1:39:19 AM
 Sample Type : Essential Oil
 Sample Name : Tea Tree - Revive EO
 Sample ID : B0122M
 Injection Volume : 0.10
 Instrument ID : GC-3



Peak Report TIC

R.Time	Name	Area%
11.769	alpha-Thujene	0.87
12.179	alpha-Pinene	2.43
14.343	Sabinene	0.37
14.646	beta-Pinene	0.69
15.277	Myrcene	0.74
16.333	alpha-Phellandrene	0.52
17.000	alpha-Terpinene	9.81
17.468	para-Cymene	2.57
17.771	Limonene	0.92
17.876	beta-Phellandrene	0.93
17.965	1,8-Cineole	2.38
19.654	gamma-Terpinene	20.07
20.412	trans-Sabinene hydrate	0.07
21.437	Terpinolene	3.27
21.738	para-Cymenene	0.05
22.392	Linalool	0.06
22.471	cis-Sabinene hydrate	0.10
24.078	cis-para-Menth-2-en-1-ol	0.17
25.303	trans-para-Menth-2-en-1-ol	0.12
25.625	Camphor	0.07
28.010	Terpinen-4-ol	41.04
28.351	para-Cymen-8-ol	0.04
28.949	alpha-Terpineol	2.90
29.066	cis-Piperitol	0.05
29.894	trans-Piperitol	0.08
34.306	cis-Ascrinol glycol	0.04
39.207	alpha-Cubebene	0.04
40.756	Isoledene	0.06
41.084	alpha-Copaene	0.19
43.098	alpha-Gurjunene	0.36
43.873	beta-Caryophyllene	0.44
44.346	Unidentified	0.07
44.785	Unidentified	0.08
45.048	Aromadendrene	1.24
45.147	Unidentified	0.13
45.258	Unidentified	0.06
45.517	alpha-Guaiene	0.17
45.715	cis-Murrola-3,5-diene	0.15
46.118	alpha-Humulene	0.08
46.387	Alloaromadendrene	0.57
47.158	10-beta-H-Cadina-1(6),4-diene	0.41
48.096	delta-Selinene	0.14
48.173	beta-Selinene	0.21
48.320	Viridiflorene (Ledene)	1.15
48.599	Bicyclogermacrene	0.61
48.790	alpha-Murolene	0.17
49.977	delta-Cadinene	1.34
50.163	cis-Calamenene	0.13
50.250	Zonarene	0.32
50.820	trans-Cadine-1,4-diene	0.23
52.570	Viridiflorol	0.10
53.036	Unidentified	0.06
53.411	Spathulenol	0.06
53.951	Globulol	0.32
54.455	Viridiflorol	0.16
54.595	Guaiol	0.12
55.193	Eudesm-5-en-11-ol	0.06
56.178	5-epi-7-epi-alpha-Eudesmol	0.11
56.383	1-epi-Cubenol	0.19
57.231	Unidentified	0.09
		100.00

Chromatogram Tea Tree - Revive EO



Comments:

The analysis of this Tea Tree, Australia batch sample meets the expected chemical profile for authentic essential oil of *Melaleuca alternifolia*. No contamination or adulteration was detected. The results provided in this GCMS quality analysis reflect the chemical composition of the oil and lot referenced above on the date of analysis.