

Sample Information

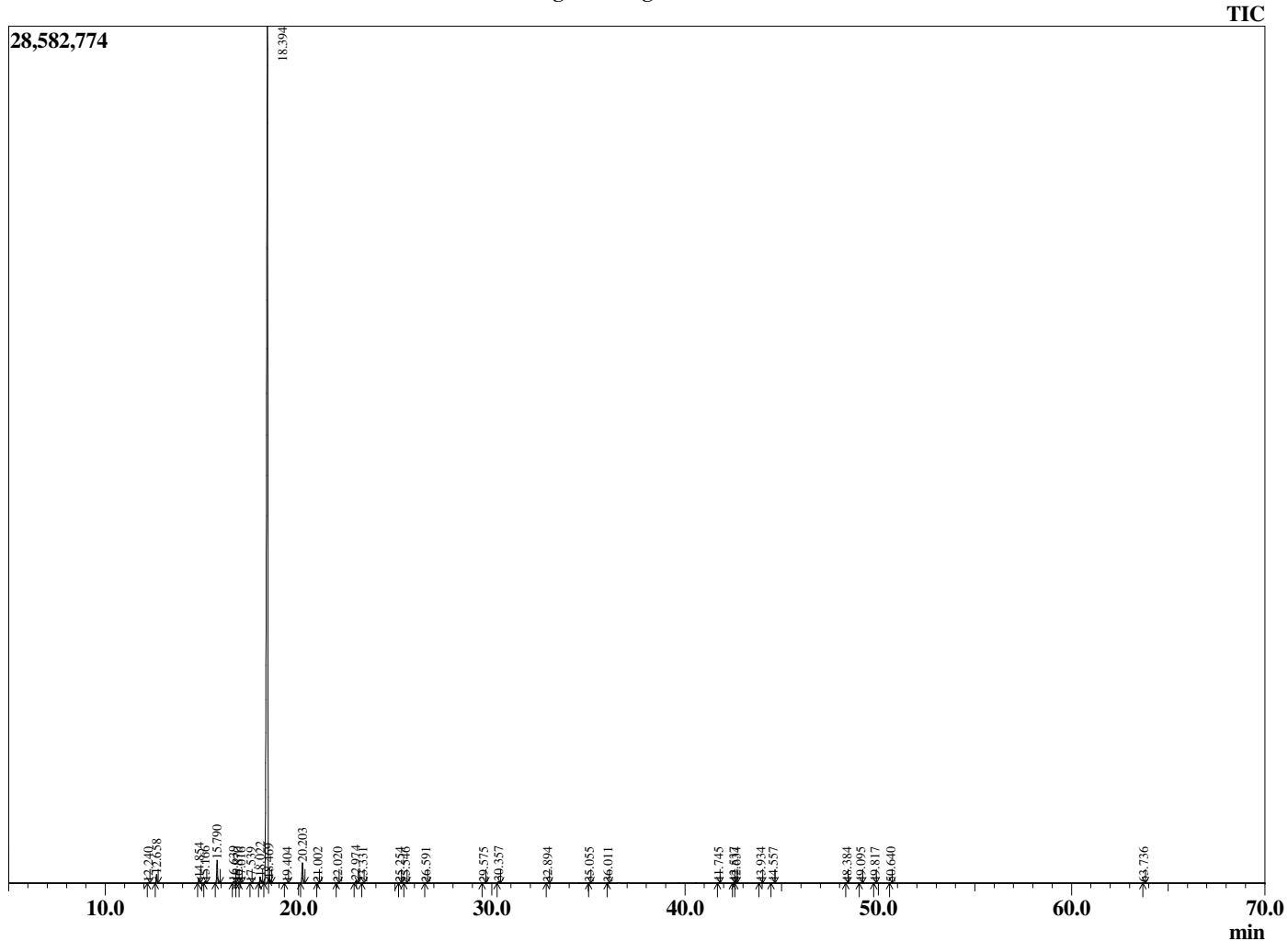
Analyzed by : Dr. Robert S. Pappas  
 Analyzed : 2/21/2019 8:02:59 PM  
 Sample Type : Essential Oil  
 Sample Name : Tangerine - Revive EO  
 Sample ID : E0NPC0205C  
 Injection Volume : 0.10  
 Instrument ID : GC-4



Peak Report TIC

R.Time	Name	Area%
12.240	alpha-Thujene	0.05
12.658	alpha-Pinene	0.60
14.854	Sabinene	0.39
15.166	beta-Pinene	0.11
15.790	Myrcene	1.70
16.639	Octanal	0.13
16.870	alpha-Phellandrene	0.03
17.016	delta-3-Carene	0.08
17.539	alpha-Terpinene	0.01
18.022	para-Cymene	0.53
18.394	Limonene	93.65
18.469	beta-Phellandrene	0.04
19.404	trans-beta-Ocimene	0.06
20.203	gamma-Terpinene	1.74
21.002	trans-Sabinene hydrate	0.02
22.020	Terpinolene	0.05
22.974	Linalool	0.17
23.331	Nonanal	0.02
25.254	cis-Limonene oxide	0.04
25.546	trans-Limonene oxide	0.05
26.591	Citronellal	0.03
29.575	alpha-Terpineol	0.05
30.357	Decanal	0.15
32.894	Carvone	0.03
35.055	Perillaldehyde	0.01
36.011	Thymol	0.01
41.745	alpha-Copaene	0.04
42.537	beta-Cubebene	0.02
42.634	beta-Elemene	0.02
43.934	Dodecanal	0.03
44.557	beta-Caryophyllene	0.03
48.384	trans-Muurolo-4(14),5-diene	0.01
49.095	Valencene	0.05
49.817	(E,E)-alpha-Farnesene	0.02
50.640	delta-Cadinene	0.03
63.736	alpha-Sinensal	0.01
		100.00

Chromatogram Tangerine - Revive EO



Comments:

The analysis of this Tangerine batch sample meets the expected chemical profile for authentic essential oil of *Citrus reticulata*. No contamination or adulteration was detected. The results provided in this GCMS quality analysis reflect the chemical composition of the oil and lot referenced above on the date of analysis.