

Sample Information

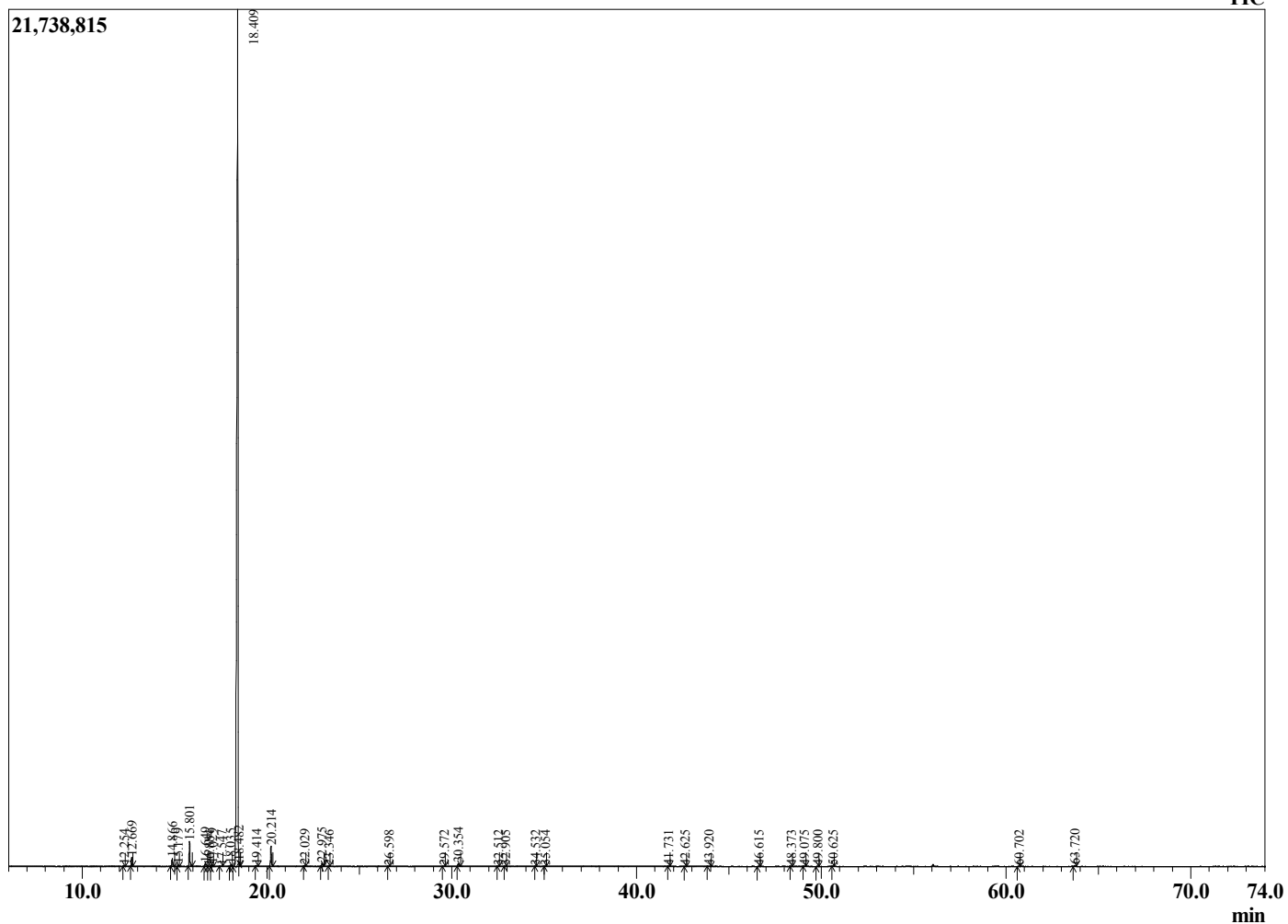
Analyzed by : Dr. Robert S. Pappas
 Analyzed : 8/1/2019 12:01:13 AM
 Sample Type : Essential Oil
 Sample Name : Tangerine - Revive
 Sample ID : E0C0419C
 Injection Volume : 0.10
 Instrument ID : GC-2



Peak Report TIC

R.Time	Name	Area%
12.254	alpha-Thujene	0.04
12.669	alpha-Pinene	0.64
14.866	Sabinene	0.60
15.179	beta-Pinene	0.11
15.801	Myrcene	1.91
16.649	Octanal	0.24
16.884	alpha-Phellandrene	0.05
17.029	3-Carene	0.12
17.547	alpha-Terpinene	0.03
18.035	para-Cymene	0.13
18.409	Limonene	93.10
18.482	beta-Phellandrene	0.06
19.414	E-beta-Ocimene	0.09
20.214	gamma-Terpinene	1.68
22.029	Terpinolene	0.06
22.975	Linalool	0.27
23.346	Nonanal	0.02
26.598	Citronellal	0.04
29.572	alpha-Terpineol	0.05
30.354	Decanal	0.27
32.512	Neral	0.02
32.905	Carvone	0.02
34.532	Geranial	0.02
35.054	Perillaldehyde	0.01
41.731	alpha-Copaene	0.03
42.625	beta-Elemene	0.03
43.920	Dodecanal	0.07
46.615	E-beta-Farnesene	0.03
48.373	Germacrene D	0.03
49.075	Valencene	0.04
49.800	E,E-alpha-Farnesene	0.04
50.625	delta-Amorphene	0.03
60.702	beta-Sinensal	0.03
63.720	alpha-Sinensal	0.08
		100.00

Chromatogram Tangerine - Revive



Comments

The analysis of this Tangerine batch sample meets the expected chemical profile for authentic essential oil of *Citrus reticulata*. No contamination or adulteration was detected. The results provided in this GCMS quality analysis reflect the chemical composition of the oil and lot referenced above on the date of analysis.