

Sample Information

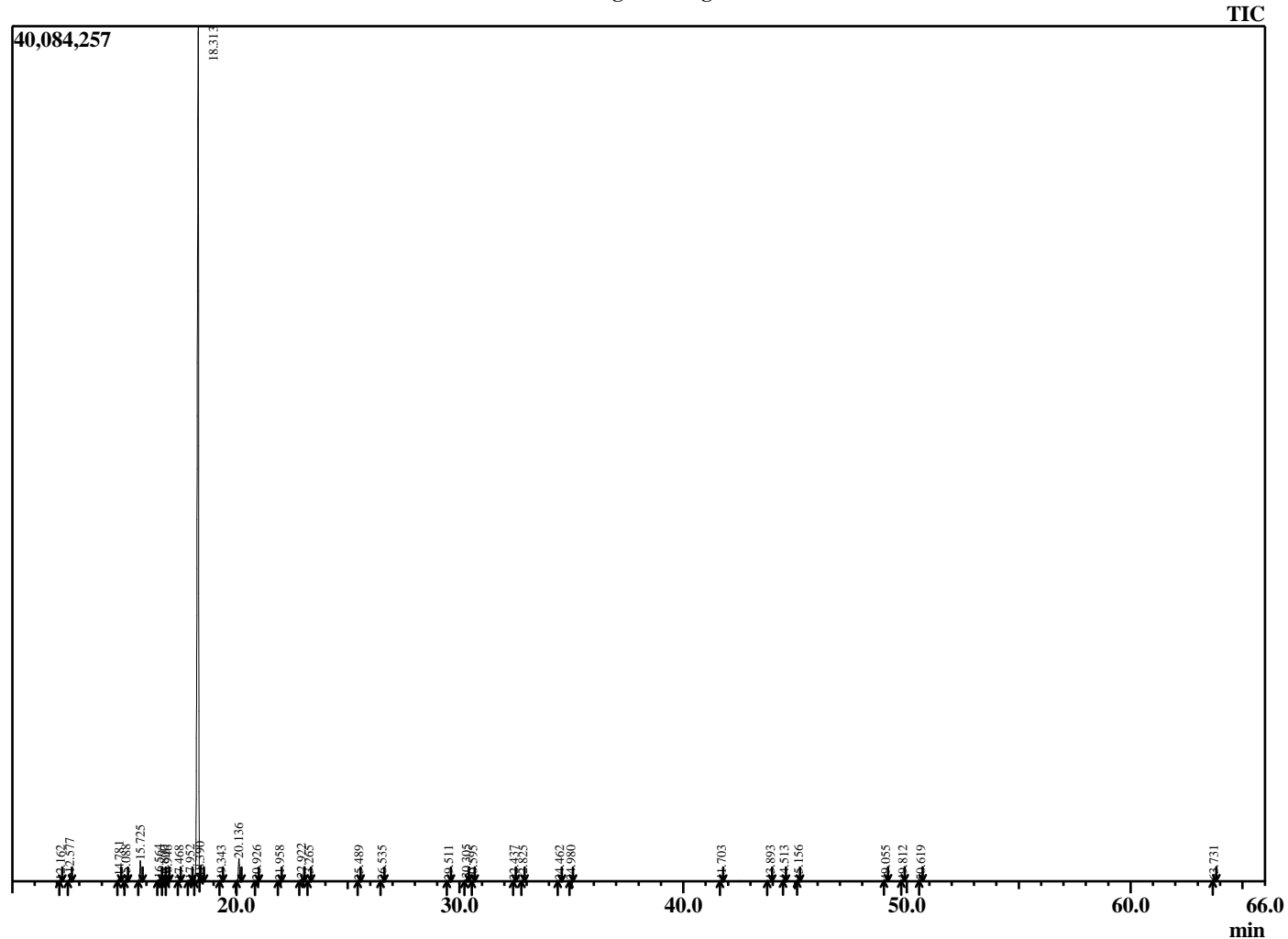
Analyzed by : Dr. Robert S. Pappas
 Analyzed : 5/8/2018 9:21:01 PM
 Sample Type : Essential Oil
 Sample Name : Tangerine
 Sample ID : B0502M [1-2]
 Injection Volume : 0.10
 Instrument ID: : GC-2



Peak Report TIC

R.Time	Name	Area%
12.162	alpha-Thujene	0.04
12.577	alpha-Pinene	0.58
14.781	Sabinene	0.38
15.088	beta-Pinene	0.11
15.725	Myrcene	1.71
16.564	Octanal	0.16
16.800	alpha-Phellandrene	0.04
16.946	delta-3-Carene	0.08
17.468	alpha-Terpinene	0.02
17.952	para-Cymene	0.13
18.313	Limonene	93.71
18.390	beta-Phellandrene	0.03
19.343	E-beta-Ocimene	0.06
20.136	gamma-Terpinene	2.09
20.926	1-Octanol	0.03
21.958	Terpinolene	0.06
22.922	Linalool	0.19
23.265	Nonanal	0.02
25.489	trans-Limonene oxide	0.01
26.535	Citronellal	0.04
29.511	alpha-Terpineol	0.04
30.305	Decanal	0.18
30.595	Octyl acetate	0.01
32.437	Neral	0.01
32.825	Carvone	0.02
34.462	Geranial	0.02
34.980	Perillaldehyde	0.01
41.703	alpha-Copaene	0.02
43.893	Dodecanal	0.04
44.513	beta-Caryophyllene	0.01
45.156	Germacrene D	0.01
49.055	Valencene	0.05
49.812	E,E-alpha-Farnesene	0.03
50.619	delta-Cadinene	0.02
63.731	alpha-Sinensal	0.03
		100.00

Chromatogram Tangerine



Comments:

The analysis of this Tangerine batch sample meets the expected chemical profile for authentic essential oil of *Citrus reticulata*. No contamination or adulteration was detected. The results provided in this GCMS quality analysis reflect the chemical composition of the oil and lot referenced above on the date of analysis.