

Sample Information

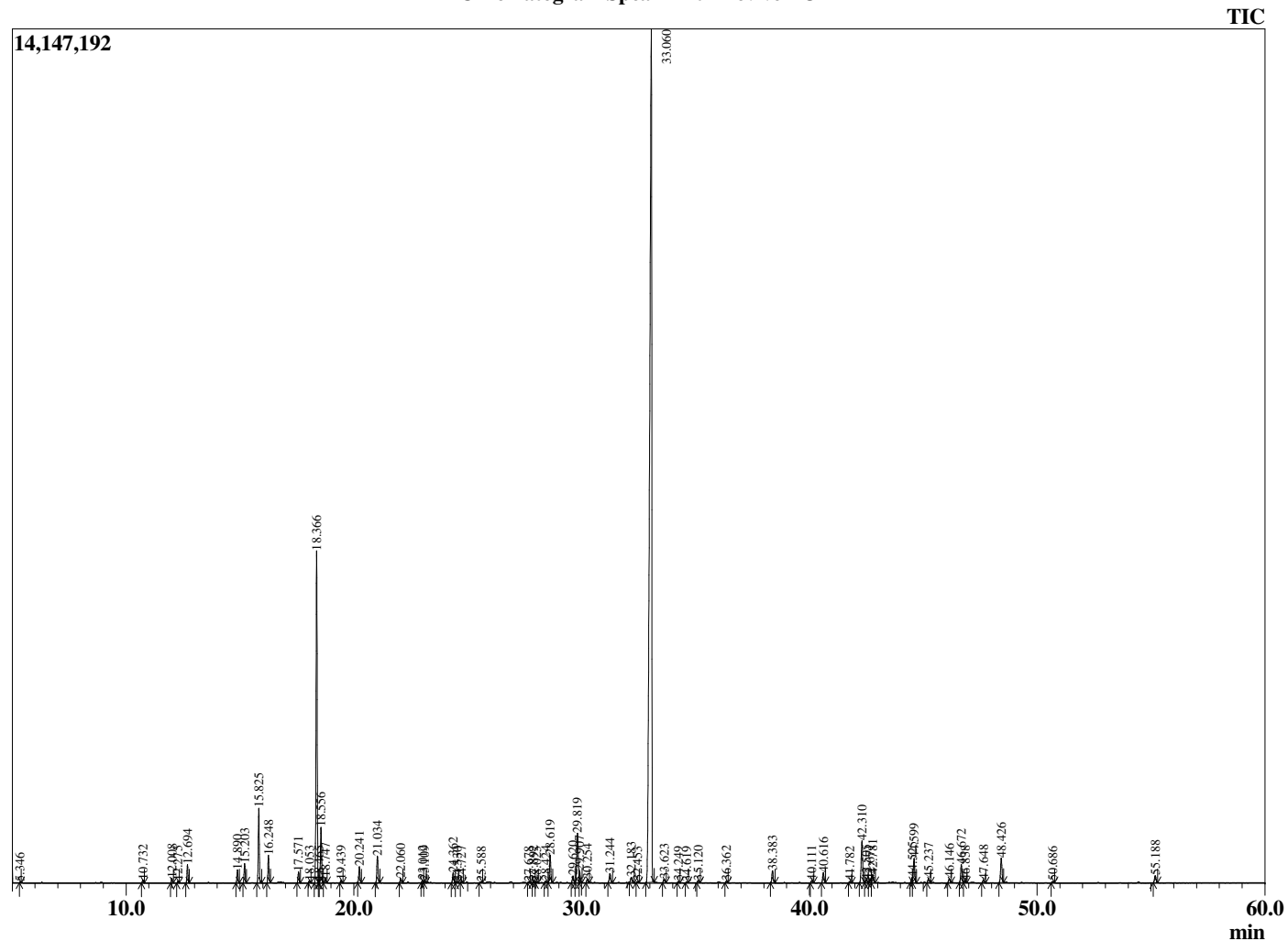
Analyzed by : Dr. Robert S. Pappas  
 Analyzed : 2/14/2019 4:17:23 AM  
 Sample Type : Essential Oil  
 Sample Name : Spearmint - Revive EO  
 Sample ID : DOB1207E  
 Injection Volume : 0.10  
 Instrument ID : GC-4



Peak Report TIC

R.Time	Name	Area%
5.346	1-Pentanol	0.02
10.732	2,5-Diethyltetrahydrofuran	0.10
12.008	Hashishene	0.14
12.275	alpha-Thujene	0.06
12.694	alpha-Pinene	0.62
14.890	Sabinene	0.47
15.203	beta-Pinene	0.71
15.825	Myrcene	2.66
16.248	3-Octanol	1.00
17.571	alpha-Terpinene	0.41
18.053	para-Cymene	0.08
18.366	Limonene	12.95
18.465	beta-Phellandrene	0.06
18.556	1,8-Cineole	2.19
18.747	cis-beta-Ocimene	0.21
19.439	trans-beta-Ocimene	0.09
20.241	gamma-Terpinene	0.64
21.034	trans-Sabinene hydrate	1.11
22.060	Terpinolene	0.18
23.012	Linalool	0.10
23.109	cis-Sabinene hydrate	0.09
24.362	3-Octyl acetate	0.44
24.530	trans-para-Mentha-2,8-dienol	0.03
24.727	cis-para-Mentha-2-en-1-ol	0.07
25.588	cis-Limonene oxide	0.06
27.678	para-Mentha-1,5-dien-8-ol	0.05
27.892	delta-Terpineol	0.08
28.025	Borneol	0.05
28.424	Menthol	0.09
28.619	Terpinen-4-ol	1.23
29.620	alpha-Terpineol	0.32
29.819	cis-Dihydrocarvone	2.67
29.907	Dihydrocarveol	0.42
30.254	trans-Dihydrocarvone	0.16
31.244	trans-Carveol	0.44
32.183	cis-Carveol	0.26
32.453	3-cis-hexenyl isovalerate	0.06
33.060	Carvone	60.62
33.623	Piperitone	0.16
34.249	Unidentified	0.05
34.619	Unidentified	0.05
35.120	Unidentified	0.09
36.362	Dihydroedulan I	0.07
38.383	Dihydroedulan II	0.57
40.111	Eugenol	0.11
40.616	trans-Carveyl acetate	0.48
41.782	alpha-Copaene	0.06
42.310	beta-Bourbonene	2.14
42.505	alpha-Bourbonene	0.15
42.671	beta-Elemene	0.14
42.781	(Z)-Jasmone	0.39
44.525	beta-Ylangene	0.19
44.599	beta-Caryophyllene	1.27
45.237	beta-Copaene	0.22
46.146	Unidentified	0.20
46.672	trans-beta-Farnesene	0.86
46.838	alpha-Humulene	0.09
47.648	Unidentified	0.14
48.426	Germacrene D	1.19
50.686	delta-Cadinene	0.07
55.188	Viridiflorol	0.36
		100.00

Chromatogram Spearmint - Revive EO



Comments:

The analysis of this Spearmint batch sample meets the expected chemical profile for authentic essential oil of *Mentha spicata*. No contamination or adulteration was detected. The results provided in this GCMS quality analysis reflect the chemical composition of the oil and lot referenced above on the date of analysis.