

Sample Information

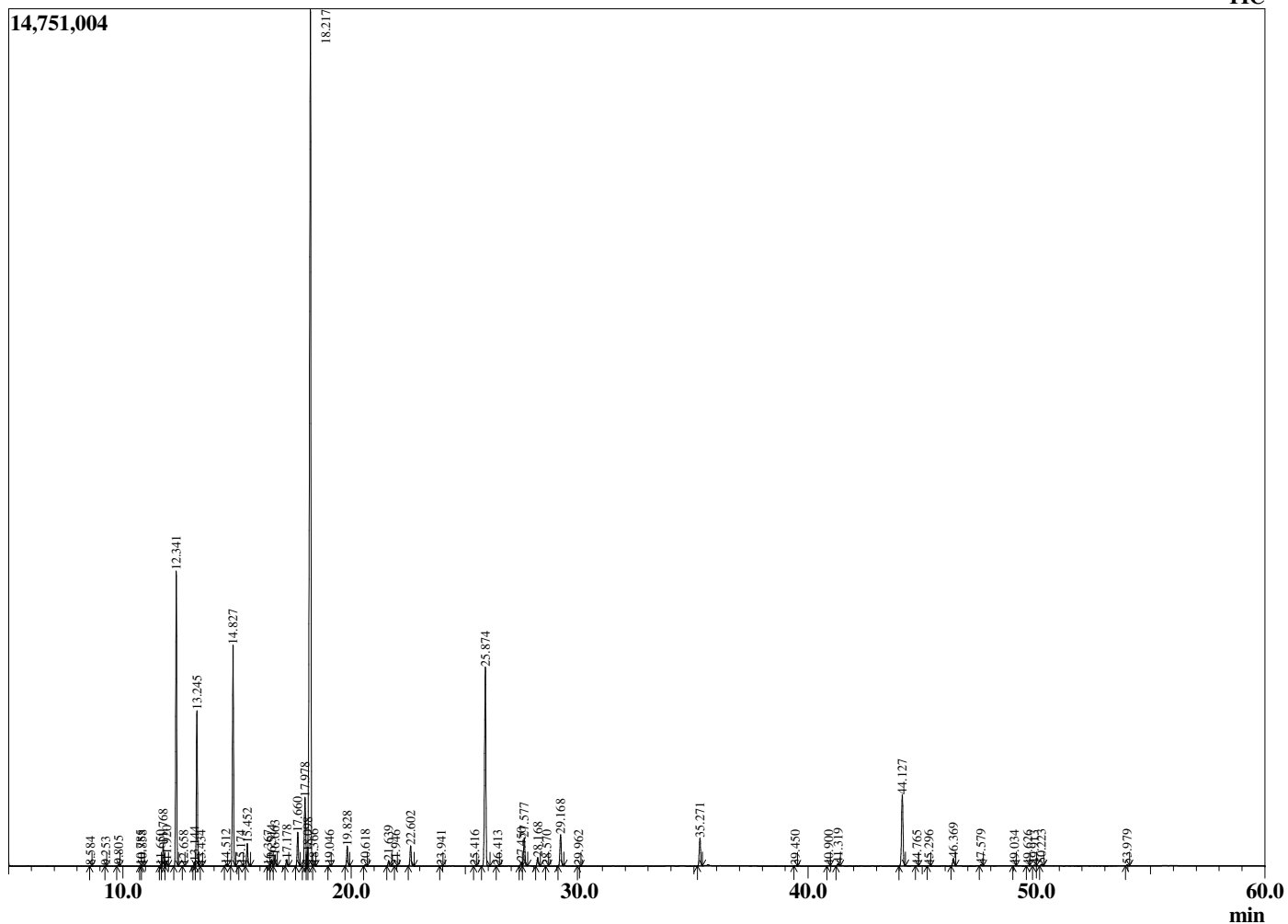
Analyzed by : Dr. Robert S. Pappas  
 Analyzed : 11/09/2018 10:24:41 PM  
 Sample Type : Essential Oil  
 Sample Name : Rosemary, Morocco  
 Sample ID : DOB1002J  
 Injection Volume : 0.10  
 Instrument ID : GC-3



Peak Report TIC

R.Time	Name	Area%
8.584	3-cis-Hexenol	0.01
9.253	Unidentified	0.01
9.805	Cyclofenchene	0.05
10.785	Bornylene	0.01
10.858	Bornylene isomer	0.02
11.650	Hashishene	0.02
11.768	Tricyclene	0.75
11.920	alpha-Thujene	0.17
12.341	alpha-Pinene	10.70
12.658	beta-Fenchene	0.02
13.144	alpha-Fenchene	0.14
13.245	Camphene	5.78
13.434	Thuja-2,4(10)diene	0.01
14.512	Sabinene	0.06
14.827	beta-Pinene	8.75
15.174	3-Octanone	0.04
15.452	Myrcene	0.88
16.367	Pseudolimonene	0.02
16.514	alpha-Phellandrene	0.26
16.663	delta-3-Carene	0.43
17.178	alpha-Terpinene	0.27
17.660	para-Cymene	1.44
17.978	Limonene	3.39
18.098	beta-Phellandrene	0.41
18.217	1,8-Cineole	44.99
18.366	cis-beta-Ocimene	0.04
19.046	trans-beta-Ocimene	0.03
19.828	gamma-Terpinene	0.86
20.618	trans-Sabinene hydrate	0.05
21.639	Terpinolene	0.22
21.946	para-Cymenene	0.01
22.602	Linalool	0.93
23.941	alpha-Fenchol	0.03
25.416	trans-Pinocarveol	0.02
25.874	Camphor	9.71
26.413	trans-beta-Terpineol	0.02
27.450	delta-Terpineol	0.18
27.577	Borneol	1.36
28.168	Terpinen-4-ol	0.40
28.570	para-Cymen-8-ol	0.02
29.168	alpha-Terpineol	1.51
29.962	Unidentified	0.02
35.271	Bornyl acetate	1.38
39.450	alpha-Cubebene	0.02
40.900	alpha-Ylangene	0.02
41.319	alpha-Copaene	0.11
44.127	beta-Caryophyllene	3.77
44.765	beta-Copaene	0.01
45.296	Aromadendrene	0.02
46.369	alpha-Humulene	0.39
47.579	trans-Cadina-1(6),4-diene	0.07
49.034	alpha-Muurolole	0.02
49.626	beta-Bisabolene	0.02
49.913	gamma-Cadinene	0.04
50.223	delta-Cadinene	0.08
53.979	Caryophyllene oxide	0.05
		100.00

Chromatogram Rosemary, Morocco



Comments:

The analysis of this Rosemary, Morocco batch sample meets the expected chemical profile for authentic essential oil of *Rosmarinus officinalis*. No contamination or adulteration was detected. The results provided in this GCMS quality analysis reflect the chemical composition of the oil and lot referenced above on the date of analysis.