

Sample Information

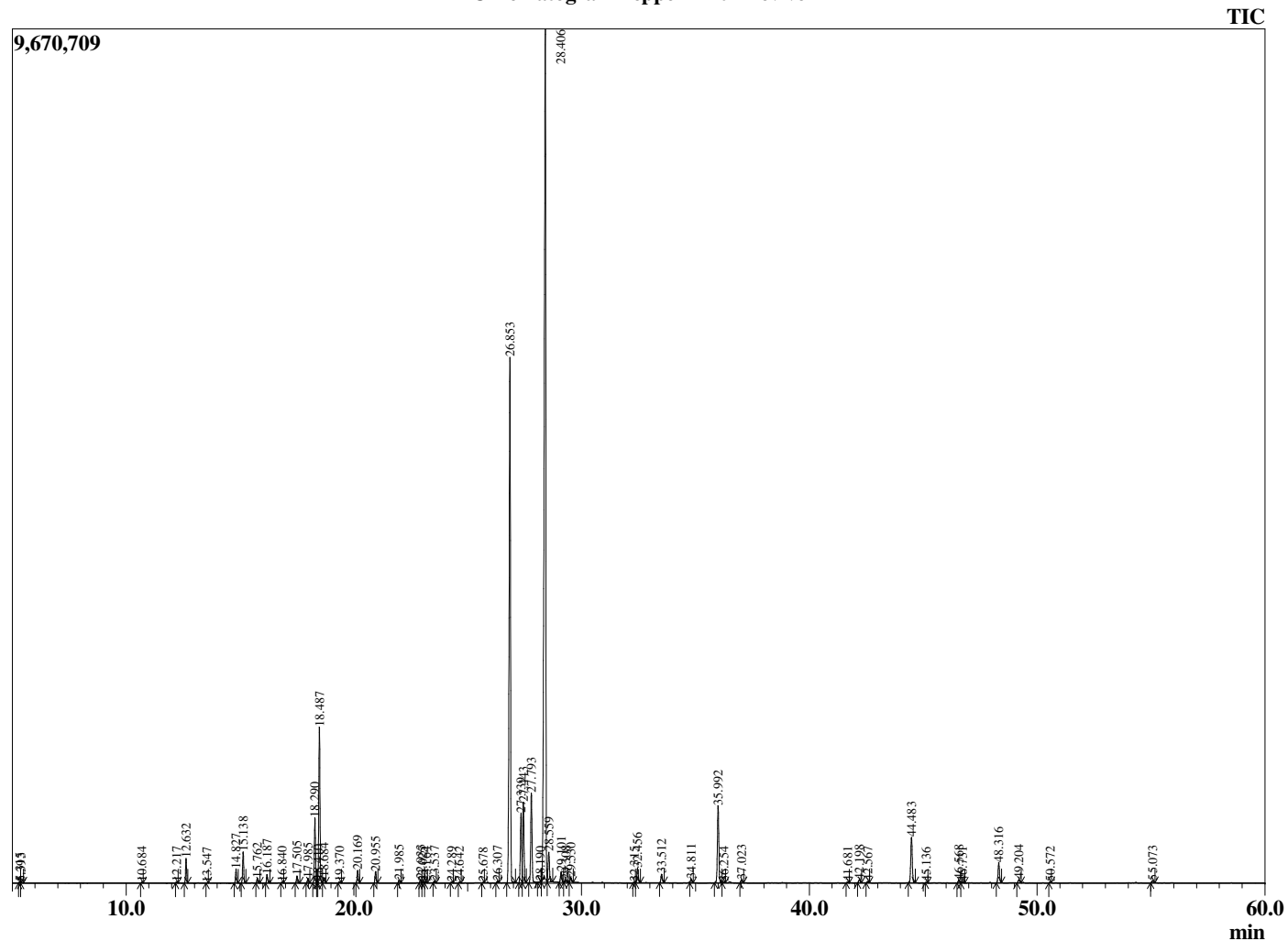
Analyzed by : Dr. Robert S. Pappas
 Analyzed : 9/11/2019 9:04:00 AM
 Sample Type : Essential Oil
 Sample Name : Peppermint - Revive
 Sample ID : E0C0708AF
 Injection Volume : 0.10
 Instrument ID : GC-4



Peak Report TIC

R.Time	Name	Area%
4.141	3-Methylbutanal	0.05
4.248	2-methylbutanal	0.02
5.315	1-Pentanol	0.03
5.393	2-Methyl butanol	0.02
10.684	2,5-Diethyltetrahydrofuran	0.03
12.217	alpha-Thujene	0.04
12.632	alpha-Pinene	0.78
13.547	Camphene	0.01
14.827	Sabinene	0.47
15.138	beta-Pinene	1.08
15.762	Myrcene	0.17
16.187	3-Octanol	0.31
16.840	alpha-Phellandrene	0.03
17.505	alpha-Terpinene	0.25
17.985	para-Cymene	0.17
18.290	Limonene	2.33
18.410	beta-Phellandrene	0.06
18.487	1,8-Cineole	5.77
18.684	cis-beta-Ocimene	0.19
19.370	trans-beta-Ocimene	0.05
20.169	gamma-Terpinene	0.45
20.955	trans-Sabinene hydrate	0.44
21.985	Terpinolene	0.11
22.933	Linalool	0.13
23.025	cis-Sabinene hydrate	0.05
23.164	2-Methylbutyl-2-methylbutyrate	0.03
23.537	2-Methylbutyl isovalerate	0.06
24.289	3-Octyl acetate	0.02
24.642	cis-para-Menth-2-en-1-ol	0.03
25.678	trans-Sabinol	0.01
26.307	Neoisopulegol	0.06
26.853	Menthone	22.38
27.339	Menthofuran	2.77
27.443	Isomenthone	3.24
27.793	Neomenthol	3.72
28.190	trans-Isopulegone	0.02
28.406	Menthol	43.99
28.559	Terpinen-4-ol	1.36
29.101	Isomenthol	0.43
29.308	Neoisomenthol	0.09
29.530	alpha-Terpineol	0.20
32.315	Hex-(3Z)-enyl isovalerate	0.02
32.456	Pulegone	0.63
33.512	Piperitone	0.38
34.811	Neomenthyl acetate	0.17
35.992	Menthyl acetate	3.42
36.254	Dihydroedulan I	0.03
37.023	Isomenthyl acetate	0.14
41.681	alpha-Copaene	0.03
42.198	beta-Bourbonene	0.14
42.567	beta-Elemene	0.05
44.483	beta-Caryophyllene	2.14
45.136	beta-Copaene	0.02
46.568	trans-beta-Farnesene	0.13
46.731	alpha-Humulene	0.05
48.316	Germacrene D	0.90
49.204	Bicyclogermacrene	0.16
50.572	delta-Cadinene	0.04
55.073	Viridiflorol	0.11
		100.00

Chromatogram Peppermint - Revive



Comments:

The analysis of this Peppermint batch sample meets the expected chemical profile for authentic essential oil of *Mentha piperita*. No contamination or adulteration was detected. The results provided in this GCMS quality analysis reflect the chemical composition of the oil and lot referenced above on the date of analysis.