

Sample Information

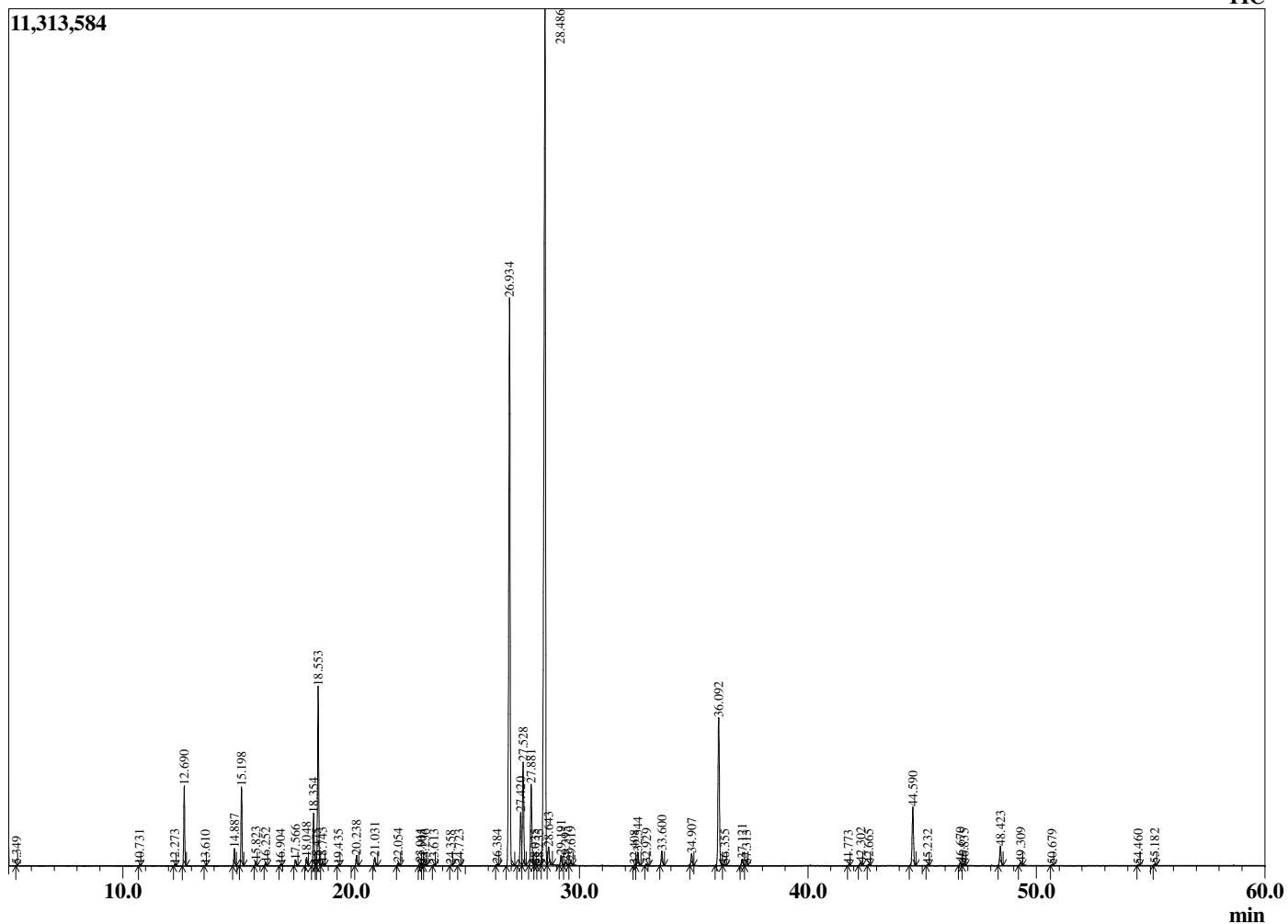
Analyzed by : Dr. Robert S. Pappas
 Analyzed : 1/29/2019 11:04:55 PM
 Sample Type : Essential Oil
 Sample Name : Peppermint - Revive EO
 Sample ID : DOB1112G
 Injection Volume : 0.10
 Instrument ID : GC-4



Peak Report TIC

R.Time	Name	Area%
5.349	1-Pentanol	0.01
10.731	2,5-Diethyltetrahydrofuran	0.02
12.273	alpha-Thujene	0.04
12.690	alpha-Pinene	2.23
13.610	Camphene	0.02
14.887	Sabinene	0.53
15.198	beta-Pinene	2.45
15.823	Myrcene	0.13
16.252	3-Octanol	0.10
16.904	alpha-Phellandrene	0.04
17.566	alpha-Terpinene	0.20
18.048	para-Cymene	0.28
18.354	Limonene	1.76
18.475	beta-Phellandrene	0.05
18.553	1,8-cineole	6.00
18.743	cis-beta-Ocimene	0.12
19.435	trans-beta-Ocimene	0.03
20.238	gamma-Terpinene	0.36
21.031	trans-Sabinene hydrate	0.31
22.054	Terpinolene	0.10
23.011	Linalool	0.10
23.105	cis-Sabinene hydrate	0.02
23.236	2-Methylbutyl-2-methylbutyrate	0.04
23.613	2-Methylbutyl isovalerate	0.03
24.358	3-Octyl acetate	0.01
24.723	cis-para-Menth-2-en-1-ol	0.03
26.384	Isopulegol	0.06
26.934	Menthone	22.42
27.420	Menthofuran	2.01
27.528	Isomenthone	3.85
27.881	Neomenthol	3.08
28.035	Unidentified	0.02
28.235	trans-Isopulegone	0.05
28.486	Menthol	39.96
28.643	Terpinen-4-ol	0.79
29.191	Isomenthol	0.40
29.395	Neoisomenthol	0.14
29.619	alpha-Terpineol	0.17
32.408	3-Hexenyl isovalerate	0.02
32.544	Pulegone	0.52
32.929	Carvone	0.06
33.600	Piperitone	0.56
34.907	Neomenthyl acetate	0.49
36.092	Menthyl acetate	6.17
36.355	Dihydroedulan	0.04
37.121	Isomenthyl acetate	0.26
37.313	Unidentified	0.02
41.773	alpha-Copaene	0.02
42.302	beta-Bourbonene	0.13
42.665	beta-Elemene	0.05
44.590	beta-Caryophyllene	2.44
45.232	beta-Gurjunene (calarene)	0.03
46.670	trans-beta-Farnesene	0.11
46.835	alpha-Humulene	0.06
48.423	Germacrene D	0.78
49.309	Bicyclogermacrene	0.14
50.679	delta-Cadinene	0.04
54.460	Unidentified	0.02
55.182	Viridiflorol	0.06
		100.00

Chromatogram Peppermint - Revive EO



Comments:

The analysis of this Peppermint Oil, USA batch sample meets the expected chemical profile for authentic essential oil of *Mentha piperita*. No contamination or adulteration was detected. The results provided in this GCMS quality analysis reflect the chemical composition of the oil and lot referenced above on the date of analysis.