

Sample Information

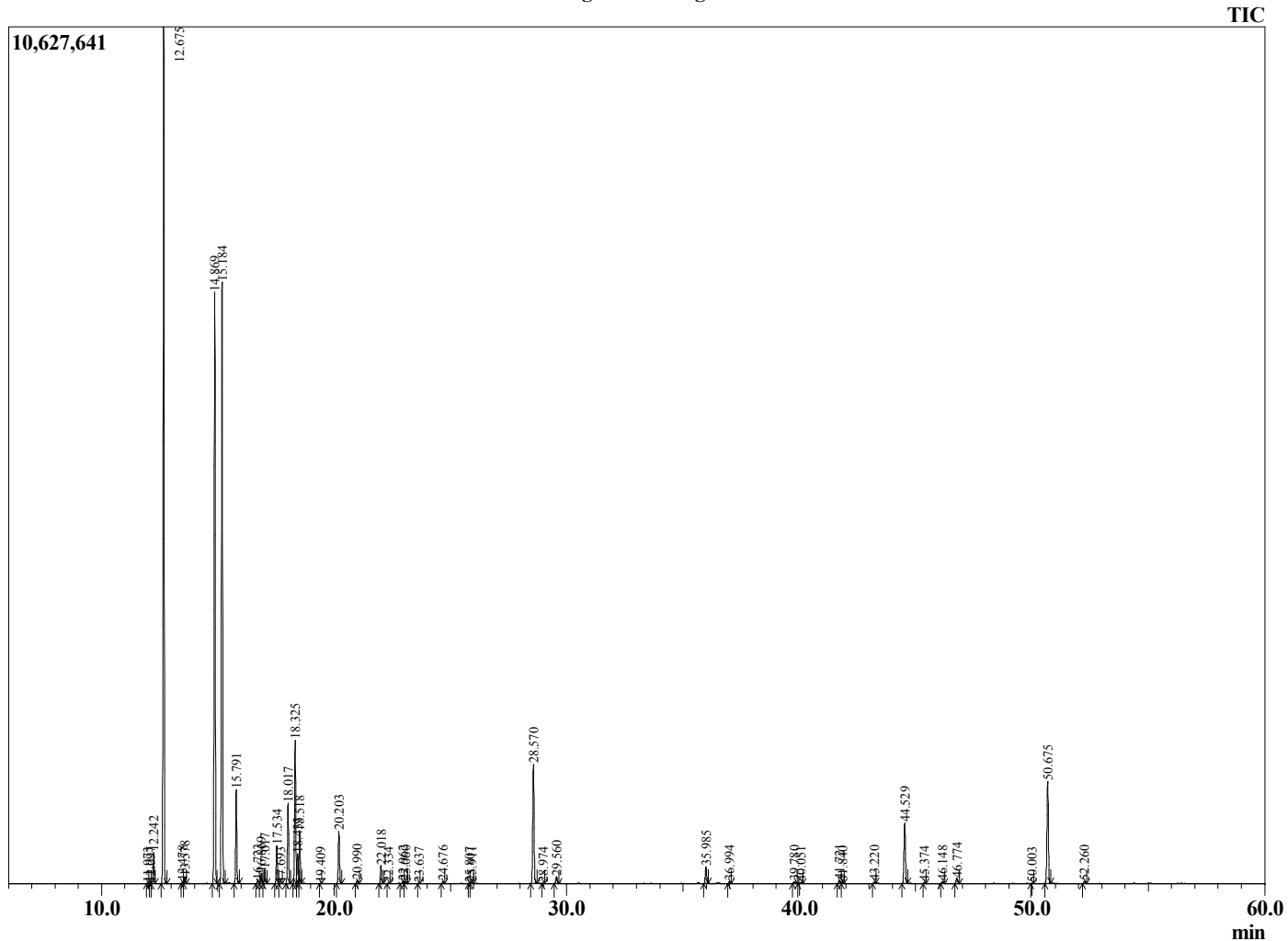
Analyzed by : Dr. Robert S. Pappas
 Analyzed : 8/30/2019 3:14:47 AM
 Sample Type : Essential Oil
 Sample Name : Nutmeg - Revive
 Sample ID : E0C0620A
 Injection Volume : 0.10
 Instrument ID : GC-2



Peak Report TIC

R.Time	Name	Area%
11.973	Hashishene	0.02
12.097	Tricyclene	0.01
12.242	alpha-Thujene	0.93
12.675	alpha-Pinene	26.30
13.478	alpha-Fenchene	0.04
13.578	Camphene	0.20
14.869	Sabinene	19.62
15.184	beta-Pinene	20.03
15.791	Myrcene	3.06
16.723	Pseudolimonene	0.13
16.869	alpha-Phellandrene	0.37
17.017	3-Carene	0.47
17.534	alpha-Terpinene	1.27
17.693	ortho-Cymene	0.02
18.017	para-Cymene	2.84
18.325	Limonene	5.08
18.433	beta-Phellandrene	0.98
18.518	1,8-Cineole	1.80
19.409	E-beta-Ocimene	0.01
20.203	gamma-Terpinene	1.89
20.990	cis-Sabinene hydrate	0.11
22.018	Terpinolene	0.70
22.334	Dehydro-p-cymene	0.02
22.962	Linalool	0.08
23.060	trans-Sabinene hydrate	0.06
23.637	Thujol	0.02
24.676	cis-p-Menth-2-en-1-ol	0.06
25.807	trans-Pinocarveol	0.01
25.911	trans-p-Menth-2-en-1-ol	0.05
28.570	Terpinen-4-ol	4.78
28.974	p-Cymen-8-ol	0.01
29.560	alpha-Terpineol	0.30
35.985	Safrole	0.69
36.994	Anisylacetone	0.08
39.780	alpha-Terpinyl acetate	0.08
40.051	Eugenol	0.09
41.721	alpha-Copaene	0.14
41.840	Geranyl acetate	0.04
43.220	Methyleugenol	0.06
44.529	beta-Caryophyllene	2.71
45.374	trans-alpha-Bergamotene	0.03
46.148	E-Isoeugenol	0.08
46.774	alpha-Humulene	0.24
50.003	beta-Bisabolene	0.01
50.675	Myristicin	4.38
52.260	Elemicin	0.11
		100.00

Chromatogram Nutmeg - Revive



Comments:

The analysis of this Nutmeg batch sample meets the expected chemical profile for authentic essential oil of *Myristica fragrans*. No contamination or adulteration was detected. The results provided in this GCMS quality analysis reflect the chemical composition of the oil and lot referenced above on the date of analysis.