

Sample Information

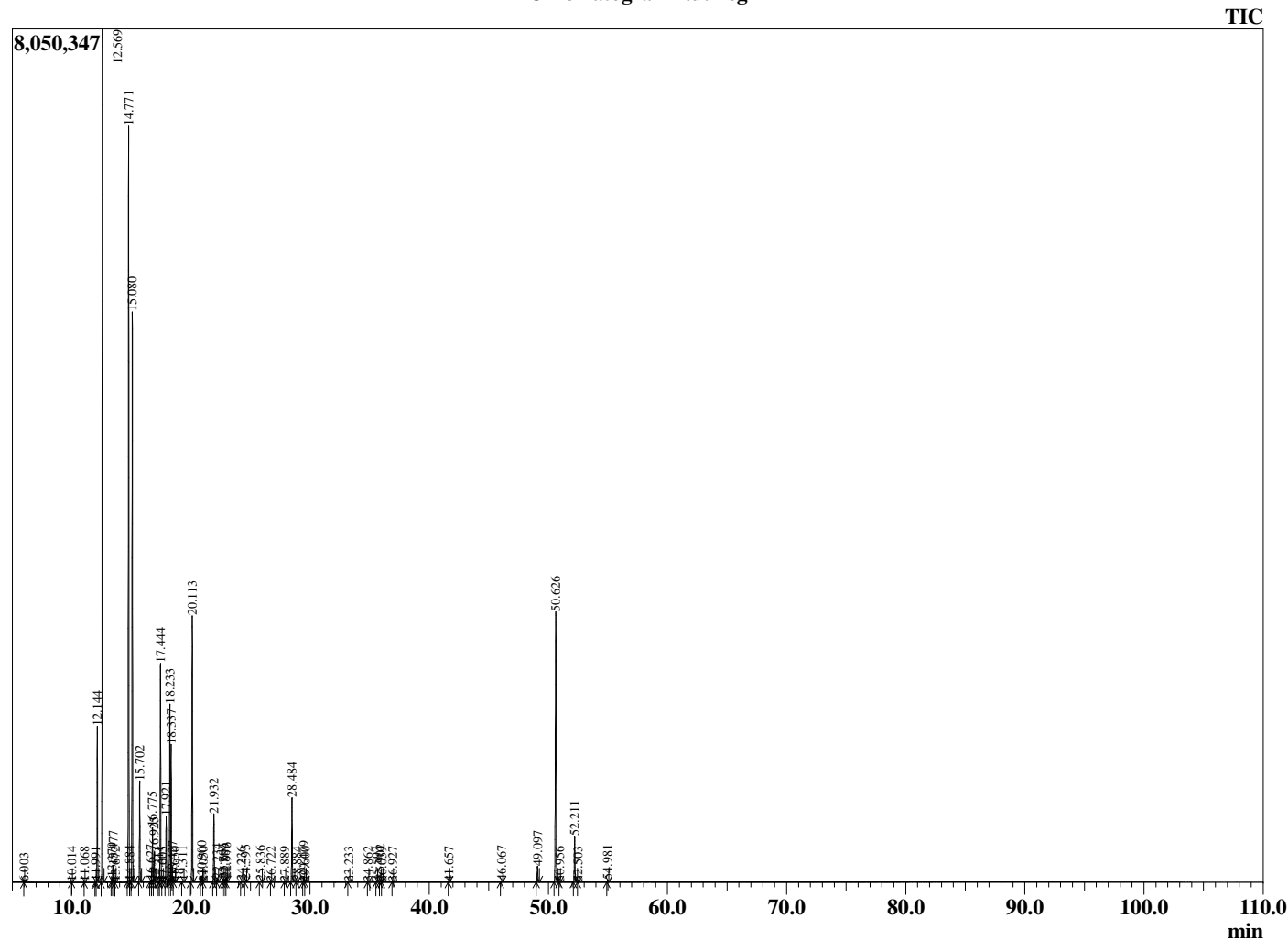
Analyzed by : Dr. Robert S. Pappas
 Analyzed : 8/14/2018 10:14:08 PM
 Sample Type : Essential Oil
 Sample Name : Nutmeg
 Sample ID : C1B0807D
 Injection Volume : 0.10
 Instrument ID: GC-3



Peak Report TIC

R.Time	Name	Area%
6.003	Toluene	0.00
10.014	Sabinene	0.00
11.068	Bornylene	0.00
11.991	Tricyclene	0.02
12.144	alpha-Thujene	3.37
12.569	alpha-Pinene	19.63
13.379	alpha-Fenchene	0.10
13.477	Camphene	0.37
13.672	Thuja-2,4(10)diene	0.00
14.771	Sabinene	18.89
14.884	Unidentified	0.03
15.080	beta-Pinene	13.84
15.702	Myrcene	2.42
16.627	Pseudolimonene	0.05
16.775	alpha-Phellandrene	1.37
16.925	delta-3-Carene	0.76
17.311	1,4-Cineole	0.02
17.444	alpha-Terpinene	5.54
17.605	ortho-Cymene	0.01
17.921	para-Cymene	1.65
18.233	Limonene	4.62
18.337	beta-Phellandrene	3.63
18.427	1,8-Cineole	0.03
18.630	cis-beta-Ocimene	0.01
19.311	trans-beta-Ocimene	0.02
20.113	gamma-Terpinene	7.16
20.900	trans-Sabinene hydrate	0.17
21.050	Unidentified	0.01
21.932	Terpinolene	1.83
22.234	para-Cymenene	0.09
22.706	Unidentified	0.08
22.889	Linalool	0.09
22.976	cis-Sabinene hydrate	0.11
24.236	alpha-Fenchol	0.02
24.595	cis-para-Menth-2-en-1-ol	0.05
25.836	Unidentified	0.05
26.722	trans-beta-Terpineol	0.01
27.889	Borneol	0.01
28.484	Terpinen-4-ol	2.51
28.884	para-Cymen-8-ol	0.01
29.479	alpha-Terpineol	0.18
29.600	Unidentified	0.01
33.233	Linalyl acetate	0.01
34.862	cis-Ascidol glycol	0.01
35.593	Bornyl acetate	0.01
35.902	Safrole	0.07
36.039	Unidentified	0.02
36.927	Unidentified	0.01
41.657	alpha-Copaene	0.01
46.067	trans-Isoeugenol	0.04
49.097	Methyl isoeugenol	0.50
50.626	Myristicin	9.03
50.956	Unidentified	0.01
52.211	Elemicin	1.44
52.503	Unidentified	0.01
54.981	Methoxyeugenol	0.07
		100.00

Chromatogram Nutmeg



Comments:

The analysis of this Nutmeg batch sample meets the expected chemical profile for authentic essential oil of *Myristica fragrans*. No contamination or adulteration was detected. The results provided in this GCMS quality analysis reflect the chemical composition of the oil and lot referenced above on the date of analysis.