

Sample Information

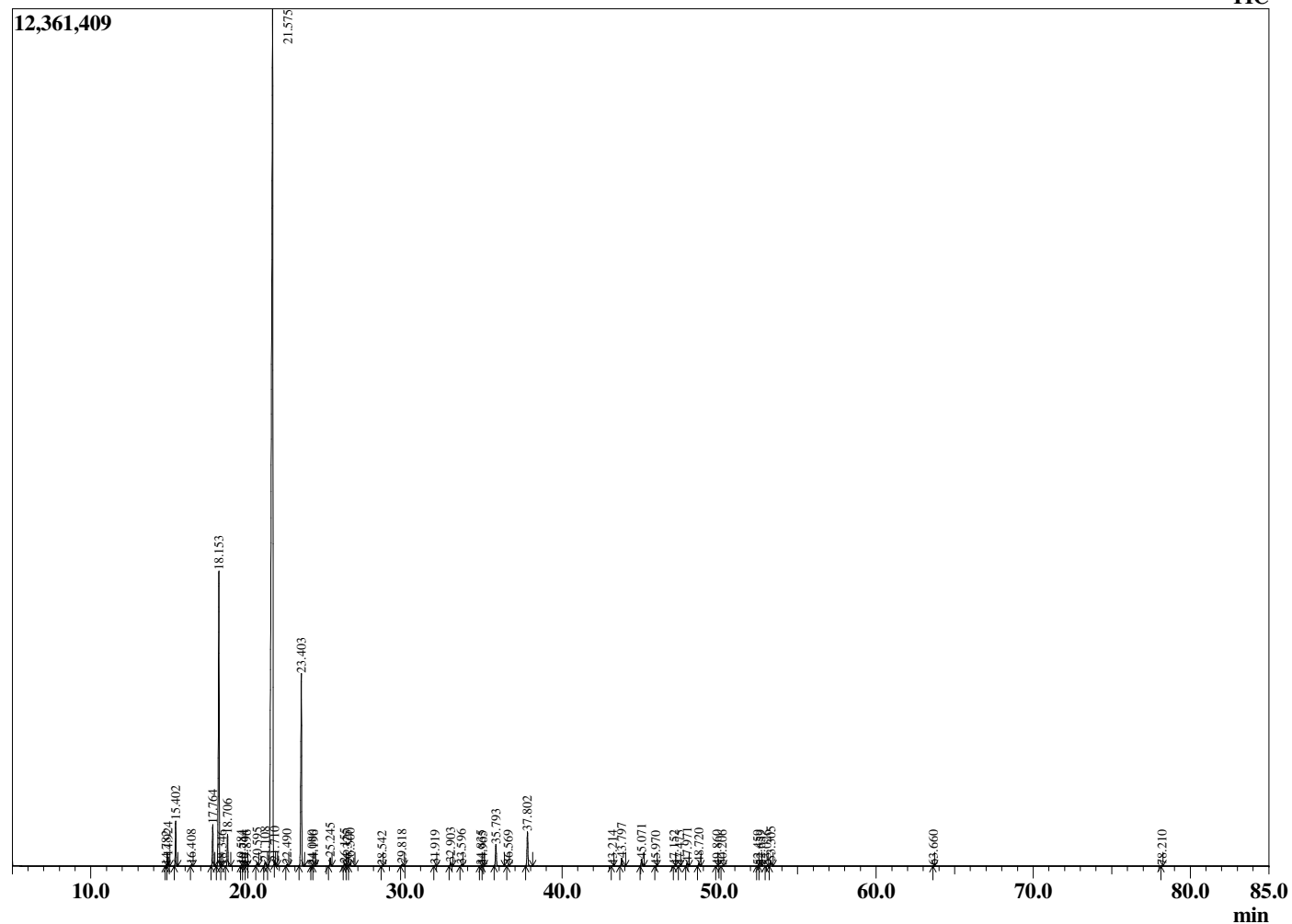
Analyzed by : Dr. Robert S. Pappas
 Analyzed : 9/27/2018 1:40:54 AM
 Sample Type : Essential Oil
 Sample Name : Lemon
 Sample ID : DOB0925C
 Injection Volume : 0.10
 Instrument ID : GC-2



Peak Report TIC

R.Time	Name	Area%
14.782	Tricyclene	0.01
14.924	alpha-Thujene	0.35
15.402	alpha-Pinene	1.70
16.408	Camphene	0.05
17.764	Sabinene	1.68
18.153	beta-Pinene	12.89
18.346	6-Methyl-5-hepten-2-one	0.01
18.706	Myrcene	1.29
19.584	Octanal	0.04
19.744	Pseudolimonene	0.02
19.896	alpha-Phellandrene	0.03
20.595	alpha-Terpinene	0.18
21.108	para-Cymene	0.23
21.575	Limonene	67.14
21.710	1,8-Cineole	0.05
22.490	E-beta-Ocimene	0.06
23.403	gamma-Terpinene	8.90
24.080	1-Octanol	0.02
24.196	trans-Sabinene hydrate	0.02
25.245	Terpinolene	0.37
26.155	Linalool	0.13
26.325	cis-Sabinene hydrate	0.01
26.500	Nonanal	0.13
28.542	cis-Limonene oxide	0.01
29.818	Citronellal	0.08
31.919	Terpinen-4-ol	0.04
32.903	alpha-Terpineol	0.17
33.596	Decanal	0.05
34.835	Nerol	0.04
34.965	Citronellol	0.01
35.793	Neral	1.08
36.569	Geraniol	0.05
37.802	Geranial	1.69
43.214	Citronellyl acetate	0.03
43.797	Neryl acetate	0.40
45.071	Geranyl acetate	0.35
45.970	beta-Elemene	0.01
47.152	Dodecanal	0.02
47.475	cis-alpha-Bergamotene	0.01
47.971	beta-Caryophyllene	0.18
48.720	trans-alpha-Bergamotene	0.16
49.860	E-beta-Farnesene	0.01
50.206	alpha-Humulene	0.01
52.459	Valencene	0.01
52.659	Bicyclogermacrene	0.02
53.026	E,E-alpha-Farnesene	0.01
53.305	beta-Bisabolene	0.23
63.660	alpha-Bisabolol	0.01
78.210	Citropten	0.01
		100.00

Chromatogram Lemon



Comments:

The analysis of this Lemon, Italy batch sample meets the expected chemical profile for authentic essential oil of *Citrus limon*. No contamination or adulteration was detected.

The results provided in this GCMS quality analysis reflect the chemical composition of the oil and lot referenced above on the date of analysis.