

Sample Information

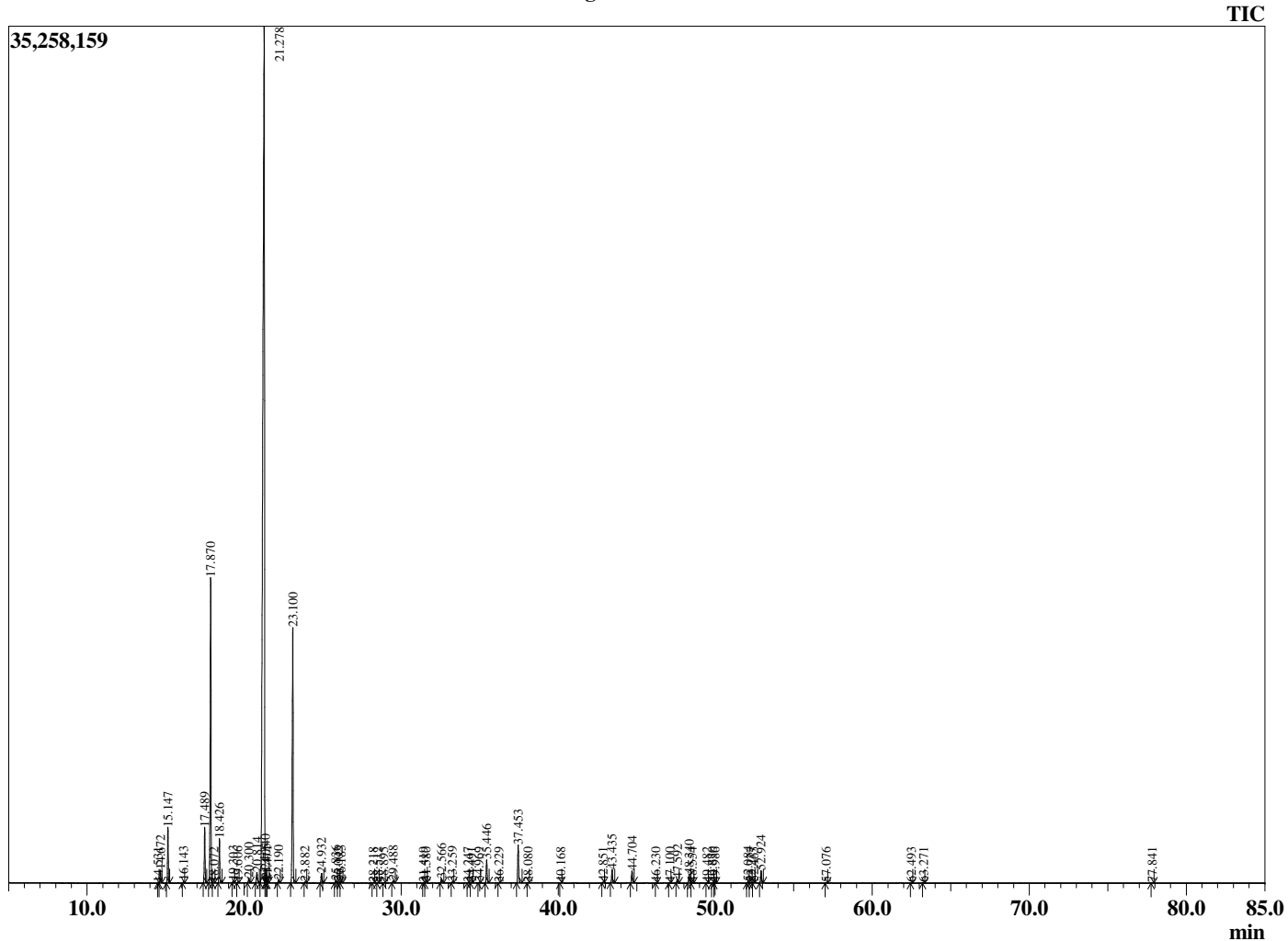
Analyzed by : Dr. Robert S. Pappas  
 Analyzed : 7/26/2019 3:18:05 PM  
 Sample Type : Essential Oil  
 Sample Name : Lemon - Revive  
 Sample ID : D0C0724B  
 Injection Volume : 0.10  
 Instrument ID : GC-2



Peak Report TIC

R.Time	Name	Area%
14.531	Tricyclene	0.00
14.672	alpha-Thujene	0.41
15.147	alpha-Pinene	1.80
16.143	Camphene	0.05
17.489	Sabinene	1.96
17.870	beta-Pinene	11.61
18.072	6-Methyl hept-5-en-2-one	0.01
18.426	Myrcene	1.55
19.303	Octanal	0.07
19.606	alpha-Phellandrene	0.03
20.300	alpha-Terpinene	0.20
20.814	para-Cymene	0.49
21.278	Limonene	64.62
21.340	beta-Phellandrene	0.24
21.405	1,8-Cineole	0.14
21.471	cis-beta-Ocimene	0.05
22.190	trans-beta-Ocimene	0.10
23.100	gamma-Terpinene	10.56
23.882	trans-Sabinene hydrate	0.04
24.932	Terpinolene	0.38
25.836	Linalool	0.10
26.002	cis-Sabinene hydrate	0.03
26.183	Nonanal	0.10
28.218	cis-Limonene oxide	0.02
28.512	trans-Limonene oxide	0.02
28.895	Unidentified	0.01
29.488	Citronellal	0.09
31.419	trans-Isocitral	0.01
31.580	Terpinen-4-ol	0.03
32.566	alpha-Terpineol	0.18
33.259	Decanal	0.04
34.247	2,3-Epoxyneral	0.01
34.491	Nerol	0.04
34.969	2,3-Epoxygeranial	0.03
35.446	Neral	0.94
36.229	Geraniol	0.02
37.453	Geranial	1.62
38.080	Perillaldehyde	0.01
40.168	Undecanal	0.01
42.851	Citronellyl acetate	0.03
43.435	Neryl acetate	0.56
44.704	Geranyl acetate	0.51
46.230	Tetradecane	0.01
47.100	cis-alpha-Bergamotene	0.02
47.592	beta-Caryophyllene	0.16
48.340	trans-alpha-Bergamotene	0.35
48.554	Unidentified	0.02
49.482	trans-beta-Farnesene	0.02
49.830	alpha-Humulene	0.01
49.986	epi-beta-Santalene	0.01
52.084	Valencene	0.05
52.277	Bicyclogermacrene	0.02
52.465	cis-alpha-Bisabolene	0.04
52.924	beta-Bisabolene	0.53
57.076	Spathulenol	0.02
62.493	Unidentified	0.01
63.271	alpha-Bisabolol	0.02
77.841	Citropten	0.02
		100.00

Chromatogram Lemon - Revive



Comments:

The analysis of this Lemon, Italy batch sample meets the expected chemical profile for authentic essential oil of *Citrus limon*. No contamination or adulteration was detected.

The results provided in this GCMS quality analysis reflect the chemical composition of the oil and lot referenced above on the date of analysis.