

Sample Information

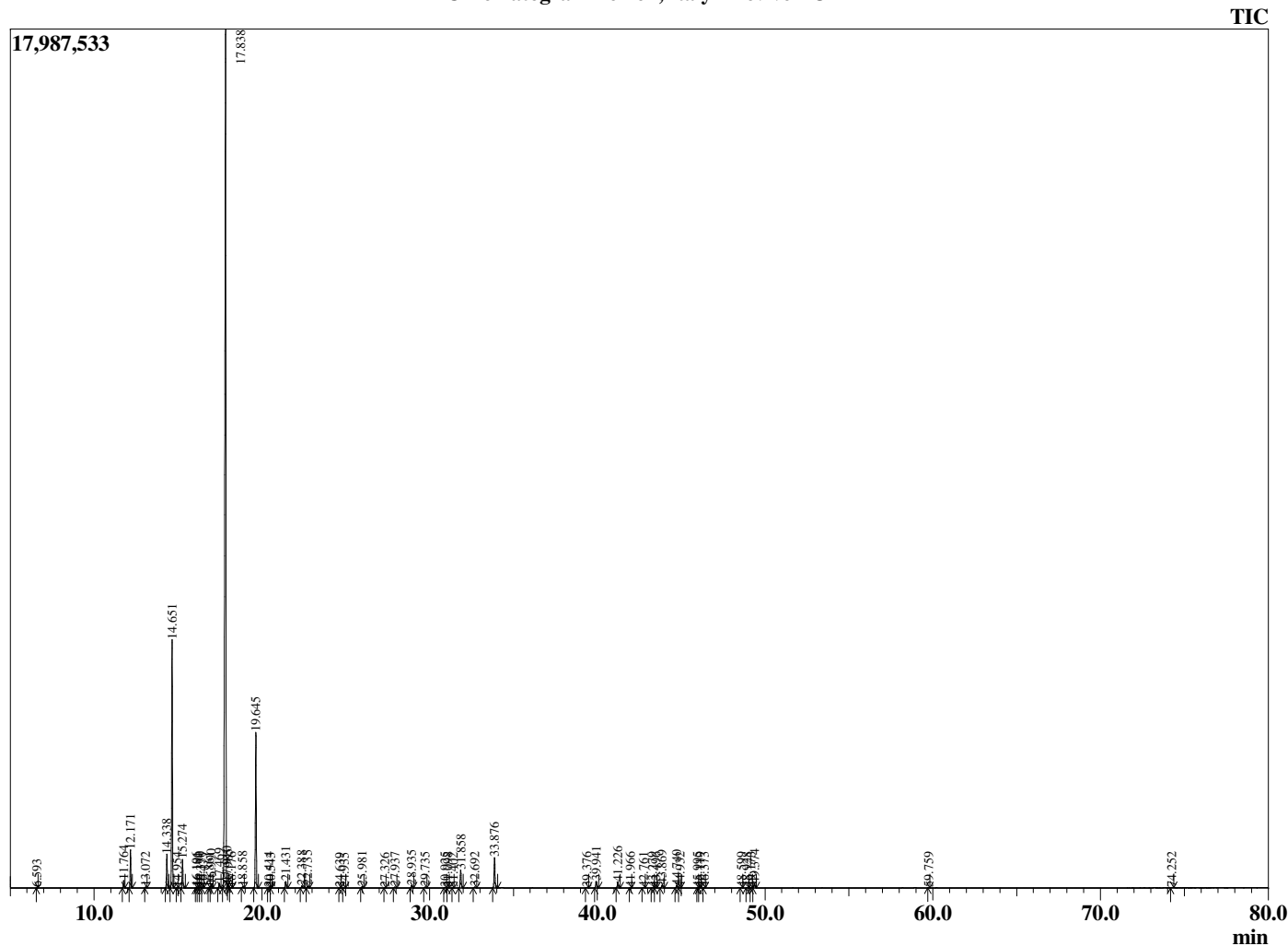
Analyzed by : Dr. Robert S. Pappas
 Analyzed : 2/9/2019 11:41:53 PM
 Sample Type : Essential Oil
 Sample Name : Lemon, Italy - Revive EO
 Sample ID : D0C0130L
 Injection Volume : 0.10
 Instrument ID : GC-3



Peak Report TIC

R.Time	Name	Area%
6.593	Hexanal	0.00
11.764	alpha-Thujene	0.36
12.171	alpha-Pinene	1.85
13.072	Camphene	0.05
14.338	Sabinene	1.80
14.651	beta-Pinene	13.38
14.954	Unidentified	0.02
15.274	Myrcene	1.51
16.106	Octanal	0.05
16.181	Pseudolimonene	0.03
16.330	alpha-Phellandrene	0.04
16.475	delta-3-Carene	0.01
16.861	1,4-Cineole	0.02
16.990	alpha-Terpinene	0.21
17.469	para-Cymene	0.29
17.838	Limonene	64.96
17.910	beta-Phellandrene	0.02
17.985	1,8-Cineole	0.08
18.176	cis-beta-Ocimene	0.02
18.858	trans-beta-Ocimene	0.07
19.645	gamma-Terpinene	8.99
20.414	trans-Sabinene hydrate	0.04
20.543	Pinol	0.01
21.431	Terpinolene	0.41
22.388	Linalool	0.14
22.735	Nonanal	0.13
24.639	cis-Limonene oxide	0.01
24.935	trans-Limonene oxide	0.01
25.981	Citronellal	0.09
27.326	Unidentified	0.01
27.937	Terpinen-4-ol	0.06
28.935	alpha-Terpineol	0.18
29.735	Decanal	0.06
30.925	Nerol	0.04
31.098	Citronellol	0.02
31.402	Unidentified	0.01
31.858	Neral	1.18
32.692	Geraniol	0.06
33.876	Geranial	2.00
39.376	Citronellyl acetate	0.05
39.941	Neryl acetate	0.45
41.226	Geranyl acetate	0.42
41.966	beta-Elementene	0.01
42.761	Unidentified	0.01
43.279	Dodecanal	0.02
43.496	cis-alpha-Bergamotene	0.01
43.869	beta-Caryophyllene	0.22
44.740	trans-alpha-Bergamotene	0.19
44.932	Unidentified	0.01
45.995	trans-beta-Farnesene	0.01
46.119	alpha-Humulene	0.01
46.373	beta-Santalene	0.01
48.599	Bicyclogermacrene	0.02
48.928	cis-alpha-Bisabolene	0.02
49.173	(E,E)-alpha-Farnesene	0.01
49.374	beta-Bisabolene	0.28
59.759	alpha-Bisabolol	0.01
74.252	Citropten	0.03
		100.00

Chromatogram Lemon, Italy - Revive EO



Comments:

The analysis of this Lemon, Italy batch sample meets the expected chemical profile for authentic essential oil of *Citrus limon*. No contamination or adulteration was detected.

The results provided in this GCMS quality analysis reflect the chemical composition of the oil and lot referenced above on the date of analysis.