

Sample Information

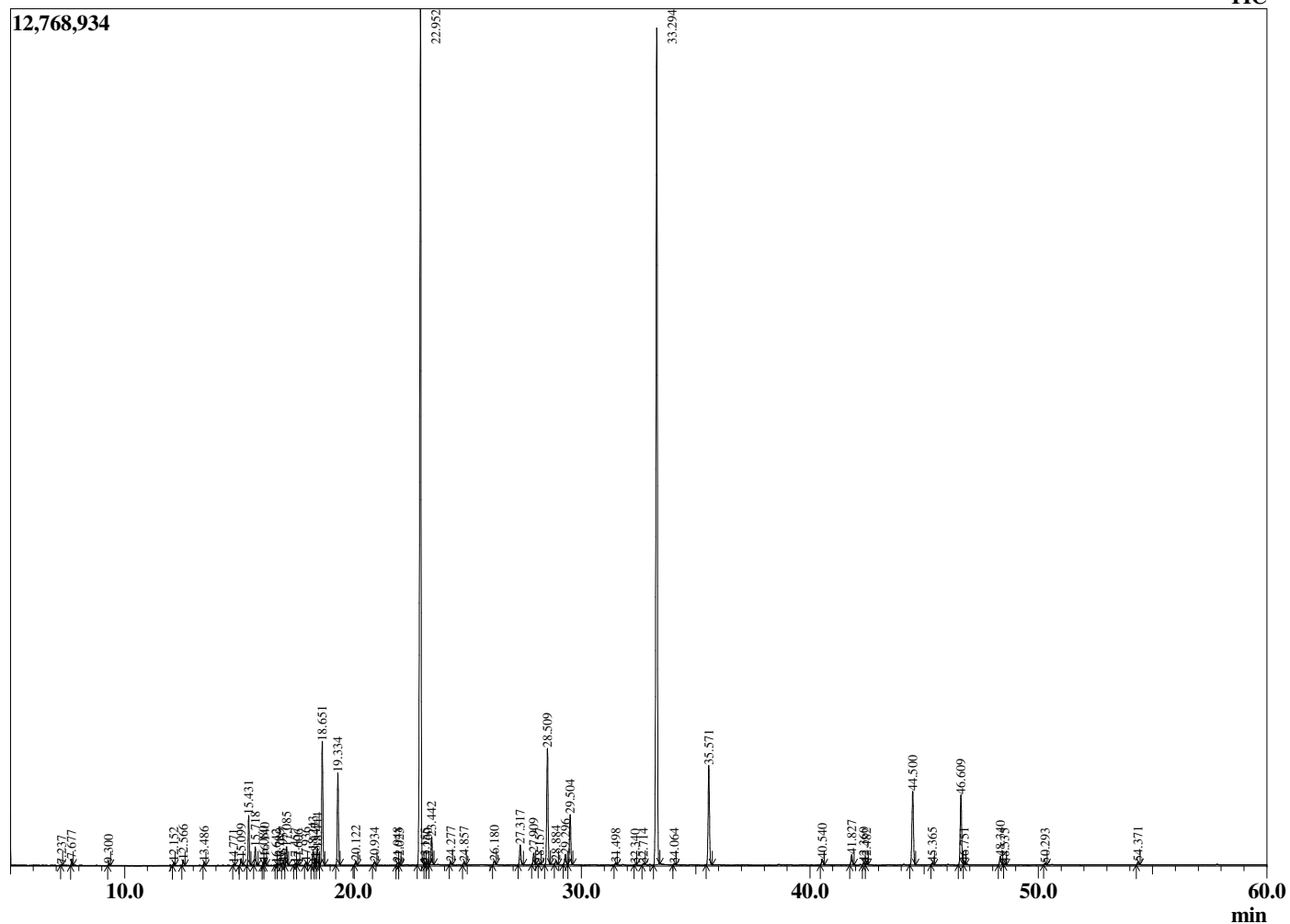
Analyzed by : Dr. Robert S. Pappas
 Analyzed : 9/28/2018 12:32:30 PM
 Sample Type : Essential Oil
 Sample Name : Lavender
 Sample ID : B0504D
 Injection Volume : 0.10
 Instrument ID : GC-3



Peak Report TIC

R.Time	Name	Area%
7.237	Butyl acetate	0.02
7.677	Hexyl methyl ether	0.14
9.300	n-Hexanol	0.05
12.152	alpha-Thujene	0.08
12.566	alpha-Pinene	0.16
13.486	Camphene	0.10
14.771	Sabinene	0.03
15.099	1-Octen-3-ol	0.22
15.431	3-Octanone	1.52
15.718	Myrcene	0.57
16.080	Butyl butyrate	0.10
16.140	3-Octanol	0.23
16.642	Pseudolimonene	0.03
16.789	alpha-Phellandrene	0.05
16.937	delta-3-Carene	0.11
17.085	Hexyl acetate	0.58
17.457	alpha-Terpinene	0.05
17.606	ortho-Cymene	0.03
17.936	para-Cymene	0.10
18.243	Limonene	0.46
18.347	beta-Phellandrene	0.23
18.444	1,8-cineole	0.57
18.651	cis-beta-Ocimene	4.10
19.334	trans-beta-Ocimene	3.01
20.122	gamma-Terpinene	0.14
20.934	trans-Sabinene hydrate + cis-Linalool oxide (l	0.13
21.948	Terpinolene	0.08
22.023	trans-Linalool oxide (furanoid)	0.06
22.952	Linalool	32.69
23.155	Hotrienol	0.06
23.260	Hexyl propionate	0.05
23.442	1-Octen-3-yl acetate	0.96
24.277	3-Octyl acetate	0.11
24.857	allo-Ocimene	0.11
26.180	Camphor	0.16
27.317	Lavandulol	0.75
27.909	Borneol	0.42
28.157	Undeca-1,3,5-triene	0.04
28.509	Terpinen-4-ol	4.42
28.884	Cryptone	0.15
29.296	Hexyl butyrate	0.41
29.504	alpha-Terpineol	1.90
31.498	Nerol	0.07
32.340	Hexyl 2-methylbutyrate	0.02
32.714	Cuminal	0.05
33.294	Linalyl acetate	33.23
34.064	Unidentified	0.04
35.571	Lavandulyl acetate	3.88
40.540	Neryl acetate	0.23
41.827	Geranyl acetate	0.39
42.360	Hexyl hexanoate	0.09
42.482	7-epi-Sesquithujene	0.05
44.500	beta-Caryophyllene	3.19
45.365	trans-alpha-Bergamotene	0.08
46.609	trans-beta-Farnesene	2.85
46.751	alpha-Humulene	0.09
48.340	Germacrene D	0.35
48.535	Farnesene isomer	0.03
50.293	gamma-Cadinene	0.05
54.371	Caryophyllene oxide	0.12
		100.00

Chromatogram Lavender



Comments:

The analysis of this Lavender batch sample meets the expected chemical profile for authentic essential oil of *Lavandula angustifolia*. No contamination or adulteration was detected.

The results provided in this GCMS quality analysis reflect the chemical composition of the oil and lot referenced above on the date of analysis.