

Sample Information

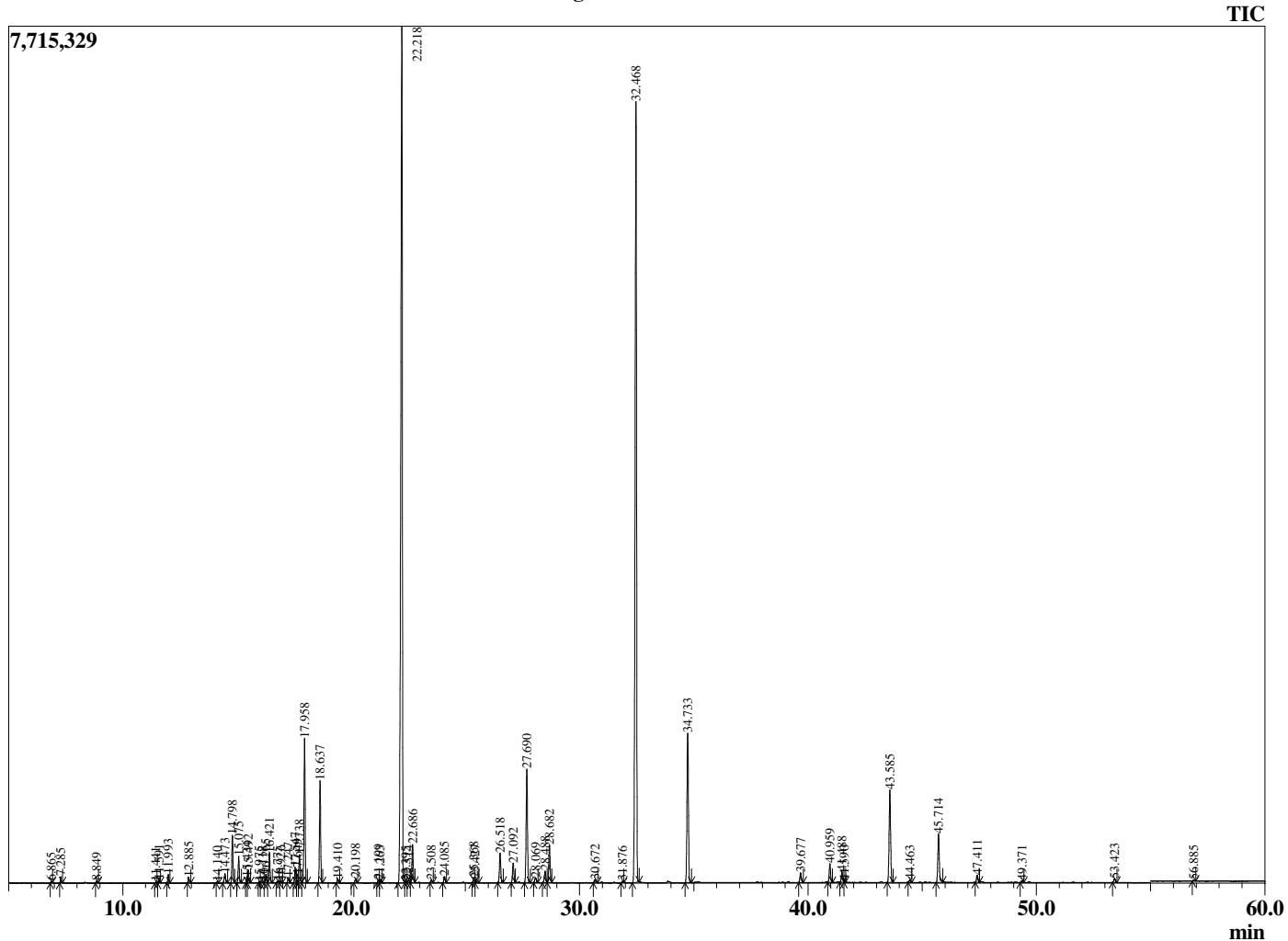
Analyzed by : Dr. Robert S. Pappas
 Analyzed : 7/15/2019 8:22:41 PM
 Sample Type : Essential Oil
 Sample Name : Lavender - Revive
 Sample ID : E0C0625K
 Injection Volume : 0.10
 Instrument ID : GC-3



Peak Report TIC

R.Time	Name	Area%
6.865	Butyl acetate	0.04
7.285	Hexyl methyl ether	0.14
8.849	n-Hexanol	0.05
11.441	Tricyclene	0.02
11.591	alpha-Thujene	0.08
11.993	alpha-Pinene	0.22
12.885	Camphene	0.16
14.140	Sabinene	0.03
14.473	1-Octen-3-ol	0.33
14.798	3-Octanone	1.34
15.075	Myrcene	0.75
15.434	Butyl butyrate	0.14
15.492	3-Octanol	0.37
15.975	Pseudolimonene	0.03
16.118	alpha-Phellandrene	0.05
16.265	delta-3-Carene	0.24
16.421	Hexyl acetate	0.84
16.775	alpha-Terpinene	0.04
16.926	ortho-Cymene	0.05
17.247	para-Cymene	0.16
17.547	Limonene	0.46
17.649	beta-Phellandrene	0.25
17.738	1,8-Cineole	0.87
17.958	cis-beta-Ocimene	4.26
18.637	trans-beta-Ocimene	3.04
19.410	gamma-Terpinene	0.12
20.198	cis-Linalool oxide (furanoid)	0.15
21.199	Terpinolene	0.12
21.263	trans-Linalool oxide (furanoid)	0.07
22.218	Linalool	34.27
22.395	Hotrienol	0.05
22.514	Hexyl propionate	0.08
22.686	1-Octen-3-yl acetate	1.23
23.508	3-Octyl acetate	0.09
24.085	allo-Ocimene	0.20
25.368	Camphor	0.20
25.427	Hexyl isobutyrate	0.09
26.518	Lavandulol	0.99
27.092	Borneol	0.66
27.690	Terpinen-4-ol	3.90
28.069	Cryptone	0.18
28.488	Hexyl hexanoate	0.41
28.682	alpha-Terpineol	1.27
30.672	Nerol	0.12
31.876	Cuminal	0.04
32.468	Linalyl acetate	28.87
34.733	Lavandulyl acetate	5.52
39.677	Neryl acetate	0.35
40.959	Geranyl acetate	0.66
41.488	Hexyl hexanoate	0.40
41.590	7-epi-Sesquithujene	0.03
43.585	beta-Caryophyllene	3.55
44.463	trans-alpha-Bergamotene	0.08
45.714	trans-beta-Farnesene	1.86
47.411	Germacrene D	0.27
49.371	gamma-Cadinene	0.07
53.423	Caryophyllene oxide	0.14
56.885	alpha-Muurolol (=Torreyol)	0.03
		100.00

Chromatogram Lavender - Revive



Comments:

The analysis of this Lavender Oil batch sample meets the expected chemical profile for authentic essential oil of *Lavandula angustifolia*. No contamination or adulteration was detected.

The results provided in this GCMS quality analysis reflect the chemical composition of the oil and lot referenced above on the date of analysis.